

INTERNATIONAL

UNDERGRADUATE

COURSE GUIDE 2027



MONASH: IMPACT IN MOTION

OUR COMMUNITY

When you join Monash, you become part of a global community committed to improving the world. With our main base in Australia, campuses in Malaysia, Indonesia, China, India and Italy, and joint partnerships with leading international teaching institutions, our global network is connected by our shared values and a commitment to the communities we serve.

While each Monash campus has its own personality, all are friendly, inclusive and welcoming communities where you'll feel at home.

BUILD MOMENTUM WITH MONASH

As a university with a global footprint, we know we must play our part in solving the world's problems. We've harnessed our knowledge, capability, creativity and scale to make real change, every second of every day.

Consistently ranked as one of the world's top universities, our unprecedented global reach generates research and education that impacts and changes both lives and communities at scale.

We have the momentum to create the future we need for generations to come. There is no time to wait.

Whether you want to change your life, your career, your community, or the future, your journey starts at Monash.



[CLICK HERE](#) to learn more



100+
PARTNER
UNIVERSITIES
AROUND THE GLOBE

8
CAMPUSES ACROSS
4 COUNTRIES

2
CAMPUS
PARTNERSHIPS

INDIA
Mumbai

CHINA
Suzhou

MELBOURNE
Clayton
Caulfield
Parkville
Peninsula
Alfred

ITALY
Prato

MALAYSIA
Kuala Lumpur

INDONESIA
Jakarta

UNIVERSITY-WIDE RANKINGS

#36 IN THE WORLD
QS World University Rankings 2026

#37 IN THE WORLD
QS Sustainability Rankings 2026

#38 IN THE WORLD
US News and World Report Best Global University Rankings, 2025-2026

#58 IN THE WORLD
Times Higher Education (THE) World University Rankings, 2026

#63 IN THE WORLD
Times Higher Education (THE) World Reputation Rankings 2026

#76 IN THE WORLD
ShanghaiRanking Academic Ranking of World Universities 2026

ACKNOWLEDGEMENT OF COUNTRY

Monash University recognises that its Australian campuses are located on the unceded lands of the people of the Kulin Nations, and pays its respects to their Elders, past and present.

MONASH IMMERSIVE EXPERIENCES

Setting you up for success: Engage in these Monash-only opportunities.

Create your dream résumé with highly sought-after innovation, intercultural and entrepreneurial skills built into your studies through your unit choices.

Experience life-changing opportunities that empower you to drive change, discover new perspectives, and positively impact local and global communities.

Monash Enrich's website lets you discover diverse opportunities from across Monash. Explore new interests and uncover exciting experiences – make your time at uni count.

Filter by areas of interest and uncover unmissable offerings that resonate with you – including electives (no prerequisites or corequisites) and programs (credit and non-credit bearing) – and that set you apart.

enrich.monash.edu

 [CLICK HERE](#)
for more information on this flagship program



Image: Students participating in our Global Immersion Guarantee program.

GLOBAL IMMERSION GUARANTEE (GIG)

Your funded, life-changing global learning experience.

Travel to an international destination and learn how local leaders are addressing the human impact on the environment. You'll spend two weeks overseas, expanding your intercultural skills and learning how to lead real change on the ground. We'll cover your flight, accommodation and visa costs – you'll only need to cover tuition and some food and personal expenses. Destinations have included: Fiji, Vanuatu, Indonesia, Italy, India, China, Malaysia, Vietnam and Samoa.

MONASH INNOVATION GUARANTEE (MIG)

Your guaranteed industry experience with leading organisations.

Gain hands-on industry experience with leading organisations such as the United Nations (UN), Microsoft and Amnesty International as part of your course with the Monash Innovation Guarantee (MIG) unit. You don't need to apply or interview. Collaborate directly with influential industry leaders and inspiring innovators on real-life challenges. No need to wait until you graduate to make a real impact – MIG helps you make important connections and have your voice heard now.

RESEARCH, EXPERIMENTATION AND DISCOVERY (RED)

Turn research into real-life impact.

Innovative Monash research has been transforming the world for more than 60 years, from the world's first successful IVF to game-changing green technology.

RED is the first unit of its kind globally, bringing cutting-edge Monash research to students, with no research background required. RED empowers students from all disciplinary backgrounds to use the immense potential of research translation to reshape their communities and the world.

VOLUNTEERING IN PRACTICE

Get credit for contributing to your community while you study.

You can get credit points towards your degree by enrolling in our volunteering unit. You don't need to choose between making a difference and focusing on your studies – you can do both through this exciting opportunity.

Volunteering is a powerful way to build invaluable connections and make a positive impact. Include volunteering in your résumé, and show employers you have leadership capability and a community-minded outlook.

WAYS INTO MONASH



Image: Students studying at Caulfield Library, Caulfield campus.

SCHOLARSHIPS

We're committed to attracting academic high-achievers and producing internationally competitive graduates. These scholarships are just some of those we offer¹:

- **Monash International Leadership Scholarship:** offered to high achievers with potential to be an ambassador for the University
- **Sir John Monash Scholarship for Excellence:** offered to the top 10 students achieving an ATAR of 98+ (or through equivalent IB or Year 12 systems)
- **Monash International Merit Scholarship:** achieved within the top 5% of your international qualification (e.g. A levels).

go.monash.edu/scholarships

STUDY GRANTS

Through our Study Grants program, we'll help you reach your full potential and achieve your career goals and aspirations.

As an international student applying to study an undergraduate course at Monash University in Australia, you'll automatically be assessed for a Monash University International Study Grant offer.

- Eligibility and maintenance criteria apply. Please visit the website for the most up-to-date details about the program.
- Please note that Monash University International Study Grants are limited, so we encourage you to apply early.

go.monash.edu/study-grants

ASEAN AWARD

The Vice-Chancellor's ASEAN Award supports high-achieving pathway and undergraduate students to study at Monash, reinforcing our deep commitment and connection to the region – socially, economically and culturally.

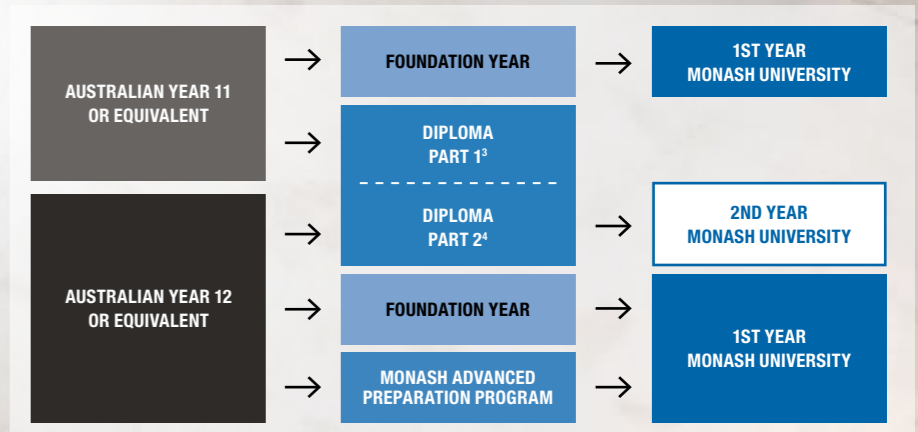
The program is designed to ease the full cost of study for international students – combining tuition support, travel and relocation assistance, visa fee coverage, and other services into one bundled award.

go.monash.edu/asean-award

MONASH PATHWAY PROGRAMS

We offer three pathway programs into an undergraduate degree course at Monash: Foundation Year, Diploma² and the Monash Advanced Preparation Program. All you need to do is decide which is best for you.

 **CLICK HERE**
for more information
on our pathway programs



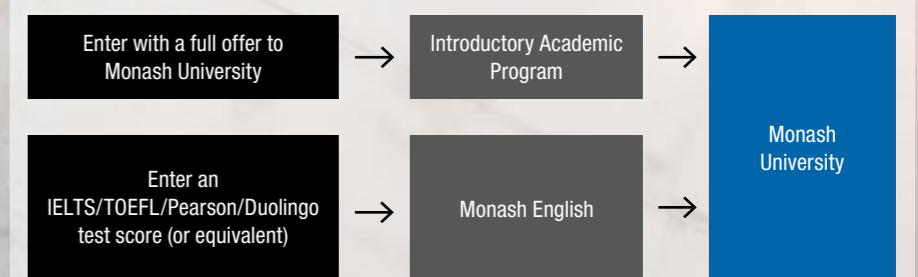
MONASH ENGLISH

We also offer two English programs to help you develop the English language skills you need to succeed.

- **Monash English:** Our core language pathway for you to meet the English language requirements for Foundation Year, Diplomas, Monash Advanced Preparation Program and your undergraduate course.
- **Introductory Academic Program:** Available if you've received a full offer to a Monash University degree program. This five-week program provides academic skills training to give you a head start in your university studies.

go.monash.edu/english-courses

CHOOSE YOUR ENGLISH LANGUAGE PATHWAY



¹ Scholarships will have their own criteria – visit our website for full details.

² The Diploma is a 96-credit-point course.

³ If you have completed an Australian Year 11 with the required scores (or equivalent) you'll be eligible for entry into our Diploma and must complete 96 credit points (both Diploma part 1 and 2).

⁴ If you have completed an Australian Year 12 with the required scores (or equivalent) you'll be eligible for entry into our Diploma and will receive 48-credit-point exemptions for part 1, reducing your course duration.

LIVING IN MELBOURNE

Our Australian base is a vibrant, multicultural city that brims with life. It offers an abundance of cultural festivities, international sporting events, cafés and restaurants serving global cuisines, features beautiful parks and beaches, and thrives with an eclectic mix of music and arts. You couldn't pick a better place to live.

As one of the top 10 most liveable cities¹, you can expect excellence in public transport and healthcare, as well as opportunities for casual work while studying. Plus, Melbourne is renowned as a welcoming environment for international students, providing a home away from home.

¹ Global Liveability Index 2024, Economist Intelligence Unit, 2024.



Image: View of Melbourne city.



Image: Typical café in Melbourne.



Image: Brighton beach boxes, Victoria.



Image: Aussie Rules football game.

LIFE AT MONASH



Image: Caulfield campus.



Image: Transport interchange, Clayton campus.



Image: Monash Sport.

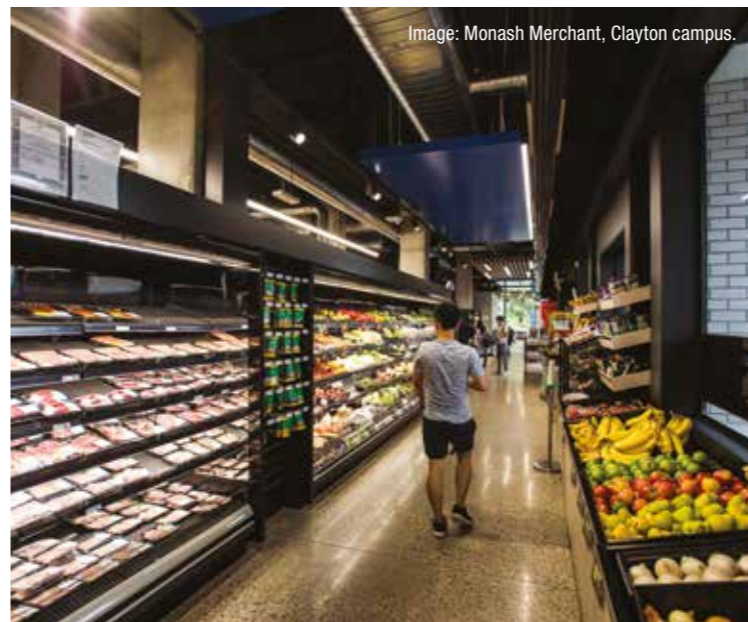


Image: Monash Merchant, Clayton campus.



Image: Gillies Hall, Peninsula campus.

We want you to get the most out of your university life and that goes beyond what course you enrol in.

Start with a short stroll to class before lunch, or chat with your friends at one of the cafés. Study on the lawns in the afternoon. Connect with fellow travellers in our clubs and societies. Gyms, tennis courts, sports fields, and even restaurants – they're all available to you as you build your student life at Monash.

Connect with peers

A huge part of your student life will be in the connections you make. We offer myriad ways to connect with other students. There are hundreds of clubs and associations, and we run events and activities throughout the year that will allow you to connect with other people and cultures. We run a student news service that you can join, and we also have a religious centre available to all denominations.

Academic services

Monash offers various services to help support you both at the administration level, but also with study programs.

Career development services

We want you to develop your employability skills and we offer services to help you with that through career, leadership and volunteering opportunities. You can also connect with your peers through our peer-mentoring program.

Health and security services

Staying physically and mentally healthy can impact the success of your studies. We offer medical, dental, counselling and pharmacy services on our campuses. We also offer disability support services, and LGBTIQ+ support services. Our security services are staffed 24 hours, so you can be sure to have assistance available to you if you're staying back late to study.

ACCOMMODATION AT MONASH

Where you'll live is one of the more important decisions you'll make at university, and when it comes to choosing a place to live, everyone has different preferences in terms of location and accommodation type.

That's why we're here to help you navigate your accommodation options.

On-campus accommodation

Living on campus offers convenience, fun, and security. Join our inclusive residential community to enjoy weekly events, make friends, and receive support from our dedicated residential life teams and 24/7 security assistance. On-campus accommodation is available at the Clayton and Peninsula campuses in a range of different styles from shared flats, halls of residence and self-contained studio apartments¹.

Applications for on-campus accommodation are free and open at the start of September. Applications are assessed on the date of application so it's important to apply as early as possible.

Other student accommodation providers

Monash University works with several student accommodation providers who offer a range of options specifically for students and often with residential support.

Renting in the private rental market

If you'd prefer to rent a house, or a room in a shared house or rooming house, we have the resources to help guide you on how to find accommodation to suit your needs.

[CLICK HERE](#) for more about accommodation at Monash

¹ The fees for living on campus at Monash University vary depending on the type of accommodation. On-campus accommodation fees include gas, water, electricity, internet, and residential parking permit.

HOW TO BUILD YOUR COURSE

So, you know exactly what studies you're keen to pursue? Or maybe you want to explore your options? Either way, you can create the course that best suits you.

COURSE TYPES

You'll enrol in either a comprehensive, specialist or a double degree course.

COMPREHENSIVE COURSES

Comprehensive courses offer many possibilities, and are a great option if you're not quite sure what to pursue. All our comprehensive courses have majors/minors so you can build a course based on your interests.

Comprehensive course map (indicative)

YEAR 1				
SEM 1	MAJOR	SPECIFIED STUDY	SPECIFIED STUDY	ELECTIVE STUDIES
SEM 2	MAJOR	SPECIFIED STUDY	SPECIFIED STUDY	ELECTIVE STUDIES
YEAR 2				
SEM 1	MAJOR	SPECIFIED STUDY	SPECIFIED STUDY	ELECTIVE STUDIES
SEM 2	MAJOR	SPECIFIED STUDY	SPECIFIED STUDY	ELECTIVE STUDIES
YEAR 3				
SEM 1	MAJOR	MAJOR	ELECTIVE STUDIES	ELECTIVE STUDIES
SEM 2	MAJOR	MAJOR	ELECTIVE STUDIES	ELECTIVE STUDIES

SPECIALIST COURSES

Specialist courses are quite focused in their subject areas. You still have options to broaden your studies, but you'll specialise in a particular subject area.

Specialist single degree (indicative)

YEAR 1				
SEM 1	CORE STUDIES	CORE STUDIES	CORE STUDIES	ELECTIVE STUDIES
SEM 2	CORE STUDIES	SPECIALIST STUDIES	SPECIALIST STUDIES	ELECTIVE STUDIES
YEAR 2				
SEM 1	SPECIALIST STUDIES	SPECIALIST STUDIES	SPECIALIST STUDIES	ELECTIVE STUDIES
SEM 2	SPECIALIST STUDIES	SPECIALIST STUDIES	SPECIALIST STUDIES	ELECTIVE STUDIES
YEAR 3				
SEM 1	SPECIALIST STUDIES	SPECIALIST STUDIES	ELECTIVE STUDIES	ELECTIVE STUDIES
SEM 2	SPECIALIST STUDIES	SPECIALIST STUDIES	ELECTIVE STUDIES	ELECTIVE STUDIES

HOW TO CREATE YOUR COURSE

No matter the type of course you choose, you'll create your course by picking units from within or outside your discipline area.

- **Core studies** – these units must be completed as part of your studies
- **Specialist studies** – you complete 12 units in your chosen specialist discipline
- **Major studies** – you choose eight units from an area of study that interests you
- **Elective studies** – you can choose units offered by Monash from any study/interest area

Your unit choices will focus or broaden your studies. What's available to you will vary depending on the course you've enrolled in.

DOUBLE DEGREES

Double degrees allow you to study towards two degrees at the same time. You can keep your options open and develop expertise in different but complementary areas. You'll not only save two years of time, you'll also save two years of course fees. We offer two kinds of double degrees: double undergraduate degrees, or undergraduate/graduate degrees.

Double undergraduate degree

A double undergraduate degree course takes two years less to complete than studying the two degrees separately. This is because the required units in one course count as electives in the other. See the sample map below.

Double degree with one comprehensive and one specialist degree (indicative)

YEAR 1				
SEM 1	MAJOR	MAJOR	CORE STUDIES	CORE STUDIES
SEM 2	MAJOR	MAJOR	CORE STUDIES	CORE STUDIES
YEAR 2				
SEM 1	MAJOR	MAJOR	SPECIALIST STUDY	SPECIALIST STUDY
SEM 2	SPECIFIED STUDY	MAJOR	SPECIALIST STUDY	SPECIALIST STUDY
YEAR 3				
SEM 1	SPECIFIED STUDY	SPECIFIED STUDY	SPECIALIST STUDY	SPECIALIST STUDY
SEM 2	SPECIFIED STUDY	SPECIFIED STUDY	SPECIALIST STUDY	SPECIALIST STUDY
YEAR 4				
SEM 1	SPECIFIED STUDY	SPECIFIED STUDY	SPECIALIST STUDY	SPECIALIST STUDY
SEM 2	SPECIFIED STUDY	MAJOR	SPECIALIST STUDY	SPECIALIST STUDY

Undergraduate/graduate double degrees

Some double degree courses incorporate both an undergraduate and graduate element. After five years' study, you'll graduate with both a bachelor's and a master's degree.

These courses are:

- Bachelor of Architectural Design and Master of Architecture
- Bachelor of Actuarial Science and Master of Actuarial Studies
- Bachelor of Medical Science and Doctor of Medicine
- Bachelor of Pharmacy (Honours) and Master of Pharmacy.

[CLICK HERE](#)
to view our sample course maps online

OUR RANGE OF DOUBLE DEGREES

Monash has one of the largest offerings of double degree combinations in Australia. For admission into a double degree, generally the higher entry requirements apply of the two single degrees. The range of criteria that applies to each single degree also applies to the double degree. For example, if you're applying for the Bachelor of Arts and Bachelor of Music, you'll need to meet the subject prerequisites for both courses and satisfy any additional requirements. Some double degree combinations may require you to study across two campuses in order to complete your studies.

ART, DESIGN AND ARCHITECTURE

ARCHITECTURAL DESIGN +
• Architecture (Master)
• Engineering¹

ARCHITECTURAL STUDIES +
• Business • Design¹ • Fine Art
• Information Technology

DESIGN +
• Architectural studies • Arts
• Business • Engineering¹
• Fine Art • Information Technology • Media Communication

FINE ART +
• Arts • Architectural Studies
• Business • Design
• Education¹
• Information Technology
• Media Communication

ARTS

ARTS +
• Business • Commerce
• Criminology • Design
• Education¹ • Engineering¹
• Fine Art • Global Studies
• Health Sciences
• Information Technology
• Laws • Marketing
• Media Communication
• Music • Politics, Philosophy and Economics • Psychology
• Science

CRIMINOLOGY +
• Arts • Information Technology
• Laws

GLOBAL STUDIES +
• Arts • Commerce
• Information Technology
• Laws • Science

INTERNATIONAL RELATIONS +
• Business • Laws

MEDIA COMMUNICATION +
• Art History and Curating • Arts
• Business • Design
• Fine Art • Marketing • Music

MUSIC +
• Arts • Commerce • Education¹
• Laws • Media Communication
• Science

POLITICS, PHILOSOPHY AND ECONOMICS +
• Arts • Commerce • Laws

BUSINESS

ACCOUNTING +
• Business

ACTUARIAL SCIENCE +
• Commerce
• Actuarial Studies (Master)

BANKING AND FINANCE +
• Business

BUSINESS +
• Accounting
• Architectural Studies • Art History and Curating • Arts
• Banking and Finance
• Design • Digital Business
• Education¹ • Fine Art
• Information Technology
• International Relations
• Marketing
• Media Communication

COMMERCE +
• Actuarial Science • Arts
• Biomedical Science
• Computer Science
• Economics • Engineering¹
• Finance • Global Studies
• Information Technology • Laws
• Music • Politics, Philosophy and Economics • Psychology
• Science

ECONOMICS +
• Commerce

DIGITAL BUSINESS +
• Business
• Information Technology

FINANCE +
• Commerce

MARKETING +
• Arts • Business
• Media Communication

EDUCATION

EDUCATION +
• Arts • Business • Fine Art
• Music • Science

[CLICK HERE](#)
to access our list of double degrees online

ENGINEERING

AEROSPACE +
• Arts • Commerce • Laws
• Science

CHEMICAL +
• Arts • Commerce
• Biomedical Science • Laws
• Pharmaceutical Science
• Science

CIVIL +
• Architectural Design • Arts
• Biomedical Science
• Commerce • Laws • Science

ELECTRICAL AND COMPUTER SYSTEMS +
• Arts • Biomedical Science
• Commerce • Computer Science¹ • Information Technology • Laws • Science

ENVIRONMENTAL +
• Arts • Commerce • Science

MATERIALS +
• Arts • Commerce • Laws
• Biomedical Science • Science

MECHANICAL +
• Arts • Biomedical Science
• Commerce • Design • Laws
• Science

ROBOTICS AND MECHATRONICS +
• Arts • Commerce • Computer Science¹ • Information Technology • Science

SOFTWARE +
• Arts • Commerce • Computer Science¹ • Information Technology • Science

INFORMATION TECHNOLOGY

COMPUTER SCIENCE +
• Commerce • Engineering¹
• Laws • Science

INFORMATION TECHNOLOGY +
• Architectural Studies • Arts
• Business • Commerce
• Criminology • Design
• Digital Business • Engineering¹
• Fine Art • Global Studies
• Laws • Science

LAWS

LAWS +
• Arts • Biomedical Science
• Commerce
• Computer Science
• Criminology • Engineering¹
• Global Studies
• Information Technology
• International Relations
• Music • Politics, Philosophy and Economics • Psychology
• Science

MEDICINE, NURSING AND HEALTH SCIENCES

BIOMEDICAL SCIENCE +
• Commerce • Engineering¹
• Laws • Science

HEALTH SCIENCES +
• Arts

NURSING +
• Nursing and Midwifery

PSYCHOLOGY +
• Arts • Commerce • Laws
• Science

PHARMACY AND PHARMACEUTICAL SCIENCES

PHARMACY +
• Pharmacy (Master)

PHARMACEUTICAL SCIENCE +
• Engineering¹

SCIENCE

SCIENCE +
• Arts • Biomedical Science
• Commerce • Computer Science • Education¹
• Engineering¹ • Global Studies
• Information Technology
• Laws • Music • Psychology

ART, DESIGN AND ARCHITECTURE



At Monash Art, Design and Architecture, you'll thrive in a creative community that allows you to take risks and break new ground.

Our degrees are all specialist courses, so your electives enable you to enhance and customise your studies to build your capabilities in specific areas and interests. We also offer double degrees where you can further expand your knowledge and skills.

INTERNSHIPS AND OVERSEAS EXPERIENCES

We offer specialised electives that give you the chance to gain practical experience through internships and placements in your field. You'll also have opportunities to work with professionals from different disciplines and even the chance to study at our international campus in Prato, Italy or join a travelling studio in Korea, Indonesia, China, Japan or Poland.

FACILITIES

World-class studios and workshops from glass, metal and ceramics to 3D printing and robotic manufacturing.

[CLICK HERE FOR FULL DETAILS OF OUR UNDERGRADUATE COURSE OFFERING](#)

Image: Architecture students working on their 3D models. Faculty of Art, Design and Architecture, Caulfield campus.

Bachelor of Architectural Design

COURSE CODE: F2001 CRICOS CODE: 059372G

LOCATION **CAULFIELD**
DURATION **3 YEARS**
INTAKE **FEBRUARY**
FEES¹ **A\$50,900**

DOUBLE DEGREE:

- Engineering (Honours)³

PREREQUISITE SUBJECT LEVELS and assumed knowledge

PREREQUISITE: English level 1 For further information, refer to pages 38-39.
assumed knowledge: Not applicable

ENGLISH TEST LEVEL²
LEVEL A (refer to page 41)

Bachelor of Architectural Design and Master of Architecture

COURSE CODE: F6003 CRICOS CODE: 090745B

LOCATION **CAULFIELD**
DURATION **5 YEARS**
INTAKE **FEBRUARY**
FEES¹ **A\$50,900**

PROFESSIONALLY ACCREDITED

PREREQUISITE SUBJECT LEVELS and assumed knowledge

PREREQUISITE: English level 1 For further information, refer to pages 38-39.
assumed knowledge: Not applicable

ENGLISH TEST LEVEL²
LEVEL A (refer to page 41)

Bachelor of Architectural Studies (only available as part of a double degree)

LOCATION **CAULFIELD**
DURATION **4 YEARS**
INTAKE **FEBRUARY**
FEES¹ **A\$52,700 – A\$55,900**

DOUBLE DEGREES:

- Business (F2016/117721F)
- Design³ (F2019/117722E)
- Fine Art (F2018/117724C)
- Information Technology (F2017/117723D)

PREREQUISITE SUBJECT LEVELS and assumed knowledge

PREREQUISITE: English level 1 For further information, refer to pages 38-39.
assumed knowledge: Entry to this course is determined by the completion of the prerequisite subjects for the desired double degree.

ENGLISH TEST LEVEL²
LEVEL A (refer to page 41)

Bachelor of Design

COURSE CODE: F2010 CRICOS CODE: 085345E

The degree you're awarded will reflect your chosen specialisation

LOCATION **CAULFIELD**

DURATION **3 YEARS**
INTAKE **FEBRUARY, JULY**
FEES¹ **A\$44,700**

DOUBLE DEGREES:

- Arts
- Architectural Studies
- Business
- Engineering (Honours)³
- Fine Art
- Information Technology
- Media Communication

PREREQUISITE SUBJECT LEVELS and assumed knowledge

PREREQUISITE: English level 1 For further information, refer to pages 38-39.
assumed knowledge: Not applicable

ENGLISH TEST LEVEL²
LEVEL A (refer to page 41)

SPECIALISATIONS

- Collaborative design
- Communication design
- Industrial design
- Spatial design

Bachelor of Fine Art

COURSE CODE: F2003 CRICOS CODE: 075112E

LOCATION **CAULFIELD**

DURATION **3 YEARS**
INTAKE **FEBRUARY, JULY**
FEES¹ **A\$42,700**

ADDITIONAL REQUIREMENTS

DOUBLE DEGREES:

- Arts
- Architectural Studies
- Business
- Design
- Education (Honours)³
- Information Technology
- Media Communication

PREREQUISITE SUBJECT LEVELS and assumed knowledge

PREREQUISITE: English level 1 For further information, refer to pages 38-39.
assumed knowledge: Not applicable

ENGLISH TEST LEVEL²
LEVEL A (refer to page 41)

COUNTRY/REGION	INTERNATIONAL QUALIFICATION	ENTRY SCORE			
		ARCHITECTURAL DESIGN	ARCHITECTURAL DESIGN/MASTER OF ARCHITECTURE	DESIGN	FINE ART
Australia	2027 ATAR for international students	75		70	Successful completion required
	UNSW Foundation Studies	7		6.5	
	University of Melbourne, Trinity College Foundation Studies	72%		67%	
	MONASH PATHWAY PROGRAMS				
	Monash University Foundation Year (commencing MUFY in 2027) ⁴	72.5%		65%	
	Monash Advanced Preparation Program	70%		63.75%	
Canada	Diploma part 2 ⁵	50%		50%	NA
	Ontario Secondary School Diploma – Grade 12	78.50%		75.40%	
China	Gaokao	65%		60%	
	Advanced Placement	6		6	
Global	SAT (Total score out of 1600)	1160		1120	
	GCE A Levels	8		7	
	International Baccalaureate (IB) Diploma Programme	26		25	
Hong Kong	Hong Kong Diploma of Secondary Education	15		13	Successful completion required
	All India Senior School Certificate	70%		66%	
India	Indian School Certificate Examination	65%		60%	
Indonesia	SMA3 – 10-point scale (6 pass)	7.5		7.2	
Malaysia	STPM	7.9		7.3	
	UEC	5		6	
Republic of Korea	College Scholastic Ability Test	310		300	
	High School Diploma	72%		67%	
Vietnam	High School Diploma	8.14		8	

¹ 2026 quoted fees, in Australian dollars and are subject to change. Fees are per 48 credit points – a standard full-time course load for a year. Course fee will vary depending on what double degree you study.

² This is only applicable if you have not satisfied the English requirement; you're required to complete a Monash-approved English test such as IELTS (Academic), Internet Based TOEFL or Pearson Test of English (Academic). Other English tests may also be accepted and are assessed when you apply to Monash.

³ Only available with select specialisations.

⁴ Entry scores may differ for students who commence MUFY in 2026 and prior. See our website for full details.

⁵ The entry requirements published in this guide apply to specific Diploma programs only and are for students commencing their studies in 2027 where applicable credit exemptions are located on our website. For more information: monash.edu/study

For full course details visit our website, monash.edu/study

ARTS, HUMANITIES, SOCIAL SCIENCES AND PERFORMING ARTS

With both specialist and comprehensive courses available, Monash Arts allows you to specify or broaden your studies to suit your interests. Monash also offers one of the largest double degree offerings in Australia, and at Monash Arts we have 40 double degree combinations – allowing you to expand your interests even further.

ACCELERATED MASTER'S PATHWAY

For high-achieving students, you can graduate with a bachelor and master's degree in only four¹ years, in one of the following programs:

- Applied Linguistics
- Bioethics
- Communications and Media Studies
- Cultural and Creative Industries
- International Development Practice
- International Relations
- International Sustainable Tourism Management
- Interpreting and Translation Studies¹
- Journalism
- Public Policy
- Strategic Communications Management.

WORLD-CLASS FACILITIES

From the high-tech, multimillion-dollar Monash Media Lab to the collaborative Learning and Teaching Building and our inspiring, comfortable libraries that provide resources, spaces and technologies, Monash's facilities will make your learning experience fun, interactive, and engaging.

SCHOLARSHIPS

We want as many brilliant minds as possible to benefit from a Monash education, which is why we offer one of the most generous scholarship programs in the country. Find out how you can achieve your full potential and make your mark on the world by exploring your options at:

monash.edu/scholarships

INDUSTRY EXPERIENCE

Monash Arts offers:

- Internationalised and industry-connected curricula
- Internships and industry projects
- Study tours in Australia and overseas
- Mentoring and leadership programs.

¹ The duration will be longer for the Interpreting Translations Studies (4.5 years) master's course.

² 2026 quoted fees, in Australian dollars and are subject to change. Fees are per 48 credit points – a standard full-time course load for a year.

³ This is only applicable if you have not satisfied the English requirement; you're required to complete a Monash-approved English test such as IELTS (Academic), iBT TOEFL or Pearson Test of English (Academic). Other English tests may also be accepted and are assessed when you apply to Monash.

⁴ Only available with select specialisations.

⁵ This is also available as an extended major.

⁶ The psychology extended major is only available in the Bachelor of Arts as a single degree, or as part of the Science/Arts double degree.

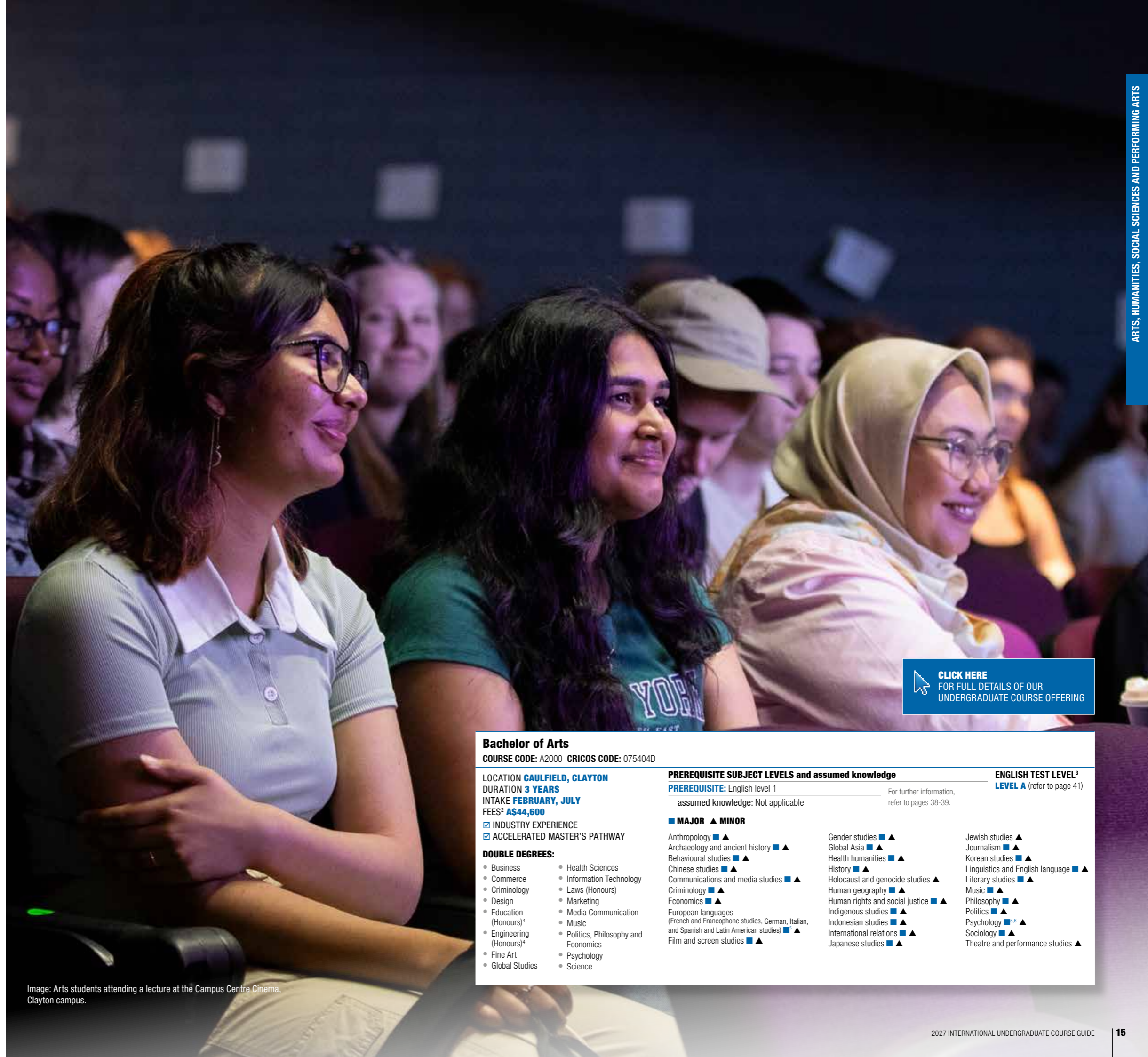


Image: Arts students attending a lecture at the Campus Centre Cinema, Clayton campus.

[CLICK HERE](#)
FOR FULL DETAILS OF OUR
UNDERGRADUATE COURSE OFFERING

Bachelor of Arts

COURSE CODE: A2000 CRICOS CODE: 075404D

LOCATION **CAULFIELD, CLAYTON**

DURATION **3 YEARS**

INTAKE **FEBRUARY, JULY**

FEES² **A\$44,600**

INDUSTRY EXPERIENCE

ACCELERATED MASTER'S PATHWAY

DOUBLE DEGREES:

- Business
- Commerce
- Criminology
- Design
- Education (Honours)⁴
- Engineering (Honours)⁴
- Fine Art
- Global Studies
- Health Sciences
- Information Technology
- Laws (Honours)
- Marketing
- Media Communication
- Music
- Politics, Philosophy and Economics
- Psychology
- Science

PREREQUISITE SUBJECT LEVELS and assumed knowledge

PREREQUISITE: English level 1

assumed knowledge: Not applicable

For further information, refer to pages 38-39.

ENGLISH TEST LEVEL³
LEVEL A (refer to page 41)

MAJOR ▲ MINOR

- Anthropology ■ ▲
- Archaeology and ancient history ■ ▲
- Behavioural studies ■ ▲
- Chinese studies ■ ▲
- Communications and media studies ■ ▲
- Criminology ■ ▲
- Economics ■ ▲
- European languages (French and Francophone studies, German, Italian, and Spanish and Latin American studies) ■ ▲
- Film and screen studies ■ ▲

- Gender studies ■ ▲
- Global Asia ■ ▲
- Health humanities ■ ▲
- History ■ ▲
- Holocaust and genocide studies ▲
- Human geography ■ ▲
- Human rights and social justice ■ ▲
- Indigenous studies ■ ▲
- Indonesian studies ■ ▲
- International relations ■ ▲
- Japanese studies ■ ▲

- Jewish studies ▲
- Journalism ■ ▲
- Korean studies ■ ▲
- Linguistics and English language ■ ▲
- Literary studies ■ ▲
- Music ■ ▲
- Philosophy ■ ▲
- Politics ■ ▲
- Psychology ■ ▲^{5,6}
- Sociology ■ ▲
- Theatre and performance studies ▲

Bachelor of Criminology

COURSE CODE: A2008 CRICOS CODE: 096756F

LOCATION **CLAYTON**
DURATION **3 YEARS**
INTAKE **FEBRUARY, JULY**
FEES¹ **A\$44,600**

- INDUSTRY EXPERIENCE
- ACCELERATED MASTER'S PATHWAY

DOUBLE DEGREES:

- Arts
- Information Technology
- Laws (Honours)

PREREQUISITE SUBJECT LEVELS and assumed knowledge²

PREREQUISITE: English level 1
assumed knowledge: Not applicable

For further information,
refer to pages 38-39.

ENGLISH TEST LEVEL³
LEVEL A (refer to page 41)

Bachelor of Global Studies

COURSE CODE: A2001 CRICOS CODE: 083203B

LOCATION **CLAYTON**
DURATION **3 YEARS**
INTAKE **FEBRUARY, JULY**
FEES¹ **A\$44,600**

- INDUSTRY EXPERIENCE
- ACCELERATED MASTER'S PATHWAY

DOUBLE DEGREES:

- Arts
- Commerce
- Information Technology
- Laws (Honours)
- Science

PREREQUISITE SUBJECT LEVELS and assumed knowledge²

PREREQUISITE: English level 1
assumed knowledge: Not applicable

For further information,
refer to pages 38-39.

ENGLISH TEST LEVEL³
LEVEL A (refer to page 41)

Bachelor of International Relations

COURSE CODE: A2020 CRICOS CODE: 114243M

LOCATION **CLAYTON**
DURATION **3 YEARS**
INTAKE **FEBRUARY, JULY**
FEES¹ **A\$44,600**

- INDUSTRY EXPERIENCE
- ACCELERATED MASTER'S PATHWAY

DOUBLE DEGREES:

- Business
- Laws (Honours)

PREREQUISITE SUBJECT LEVELS and assumed knowledge²

PREREQUISITE: English level 1
assumed knowledge: Not applicable

For further information,
refer to pages 38-39.

ENGLISH TEST LEVEL³
LEVEL A (refer to page 41)

Bachelor of Media Communication

COURSE CODE: A2002 CRICOS CODE: 093854F

LOCATION **CAULFIELD**
DURATION **3 YEARS**
INTAKE **FEBRUARY, JULY**
FEES¹ **A\$45,100**

- INDUSTRY EXPERIENCE
- ACCELERATED MASTER'S PATHWAY

DOUBLE DEGREES:

- Art History and Curating
- Arts
- Business
- Design
- Fine Art
- Marketing
- Music

PREREQUISITE SUBJECT LEVELS and assumed knowledge²

PREREQUISITE: English level 1
assumed knowledge: Not applicable

For further information,
refer to pages 38-39.

ENGLISH TEST LEVEL³
LEVEL A (refer to page 41)

SPECIALISATIONS

- Journalism
- Media
- Public relations
- Screen

Bachelor of Music

COURSE CODE: A2003 CRICOS CODE: 017113G

LOCATION **CLAYTON**
DURATION **3 YEARS**
INTAKE **FEBRUARY, JULY**
FEES¹ **A\$39,500**

- ADDITIONAL REQUIREMENTS
- INDUSTRY EXPERIENCE
- ACCELERATED MASTER'S PATHWAY

DOUBLE DEGREES:

- Arts
- Commerce
- Education (Honours)⁴
- Laws (Honours)
- Media Communication
- Science

PREREQUISITE SUBJECT LEVELS and assumed knowledge²

PREREQUISITE: English level 1
assumed knowledge: Not applicable

For further information,
refer to pages 38-39.

ENGLISH TEST LEVEL³
LEVEL A (refer to page 41)

SPECIALISATIONS

- Composition and music technology
- Music performance (classical or jazz and improvisation)
- Popular music

Bachelor of Politics, Philosophy and Economics

COURSE CODE: A2010 CRICOS CODE: 0100405

LOCATION **CLAYTON**
DURATION **3 YEARS**
INTAKE **FEBRUARY, JULY**
FEES¹ **A\$50,700**

- INDUSTRY EXPERIENCE
- ACCELERATED MASTER'S PATHWAY

DOUBLE DEGREES:

- Arts
- Commerce
- Laws (Honours)

PREREQUISITE SUBJECT LEVELS and assumed knowledge²

PREREQUISITE: English level 1
assumed knowledge: Maths level 2

For further information,
refer to pages 38-39.

ENGLISH TEST LEVEL³
LEVEL A (refer to page 41)

SPECIALISATIONS

- Economic analysis
- Philosophy
- Politics and governance

COUNTRY/ REGION	INTERNATIONAL QUALIFICATION	ENTRY SCORE						
		ARTS	CRIMINOLOGY	GLOBAL STUDIES	INTERNATIONAL RELATIONS	MEDIA COMMUNICATION	MUSIC	POLITICS, PHILOSOPHY AND ECONOMICS
Australia	2027 ATAR for international students	75	75	80	75	75	70	80
	UNSW Foundation Studies	7	7	7.5	7	7	6.5	7.5
	University of Melbourne, Trinity College Foundation Studies	72%	72%	77%	72%	72%	67%	77%
	MONASH PATHWAY PROGRAMS							
	Monash University Foundation Year (commencing MU FY in 2027) ⁸	65%	67.50%	72.50%	67.50%	67.50%	63.75%	72.50%
	Monash Advanced Preparation Program	67.50%	67.50%	72.50%	67.50%	67.50%	63.75%	72.50%
Canada	Diploma part 2 ⁹	55%	55%	60%	55%	55%	55%	60%
	Ontario Secondary School Diploma – Grade 12	78.50%	78.50%	81.60%	78.50%	78.50%	75.40%	81.60%
China	Gaokao	65%	65%	70%	65%	65%	60%	70%
	Advanced Placement	6	6	7	6	6	6	7
Global	SAT (Total score out of 1600)	1160	1160	1190	1160	1160	1120	1190
	GCE A Levels	8	8	9	8	8	7	9
	International Baccalaureate (IB) Diploma Programme	26	26	28	26	26	25	28
Hong Kong	Hong Kong Diploma of Secondary Education	15	15	17	15	15	13	17
India	All India Senior School Certificate	70%	70%	75%	70%	70%	66%	75%
	Indian School Certificate Examination	65%	65%	70%	65%	65%	60%	70%
Indonesia	SMA3 – 10-point scale (6 pass)	7.5	7.5	7.9	7.5	7.5	7.2	7.9
Malaysia	STPM	7.9	7.9	8.5	7.9	7.9	7.3	8.5
	UEC	5	5	4.2	5	5	6	4.2
Republic of Korea	College Scholastic Ability Test	310	310	320	310	310	300	320
	High School Diploma	72%	72%	77%	72%	72%	67%	77%
Vietnam	High School Diploma	8.14	8.14	8.28	8.14	8.14	8	8.28

¹ 2026 quoted fees, in Australian dollars and are subject to change. Fees are per 48 credit points – a standard full-time course load for a year.

² If you have completed an Australian Year 12 or IB Diploma Programme you must satisfy the maths and/or science prerequisite level requirements specified on page 39. If you have completed another international secondary qualification, or higher, with maths and/or science, see page 39 for full details regarding assumed knowledge.

³ This is only applicable if you have not satisfied the English requirement; you're required to complete a Monash-approved English test such as IELTS (Academic), iBT TOEFL or Pearson Test of English (Academic). Other English tests may also be accepted and are assessed when you apply to Monash.

⁴ Only available with select specialisations.

⁵ This is also available as an extended major.

⁶ The psychology extended major is only available in the Bachelor of Arts as a single degree, or as part of the Science/Arts double degree.

⁷ July intake is only available with the Music performance specialisation.

⁸ Entry scores may differ for students who commence MU FY in 2026 and prior. See our website for full details.

⁹ The entry requirements published in this guide apply to specific Diploma programs only and are for students commencing their studies in 2027 where applicable credit exemptions are located on our website. For more information: monash.edu/study

For full course details visit our website, monash.edu/study

BUSINESS AND COMMERCE

RANKED NO.1 IN AUSTRALIA
BUSINESS ADMINISTRATION,
ECONOMICS AND FINANCE¹

RANKED TOP 50 IN THE WORLD
ECONOMICS AND
ECONOMETRICS,
ACCOUNTING AND FINANCE,
AND MARKETING¹



At Monash Business School, we'll help you specialise in the most impactful fields of business. We offer Australia's widest range of business single and double degree courses, providing the flexibility to design your course to suit your goals and interests.

DOUBLE YOUR OPTIONS

A double degree is a great way to expand your employability. Consider combining two different areas of business as a double degree course to really strengthen your career prospects, or combine two passions by pairing business with law, engineering, arts or education.

If you meet the requirements, you may also be able to broaden your studies in a single business degree by using your elective subjects to add a second major within business or from another faculty.

INDUSTRY EXPERIENCE

Gain practical experience while earning credit towards your degree. Industry placements and working on real business cases are the ideal way to enhance your career readiness.

You can also join our mentoring programs, take part in volunteering opportunities and attend networking events – all designed to build confidence, make connections and shape your career journey.

Monash Business School is recognised for its prestigious 'triple accreditation' from global accrediting bodies. This status is held by only 1% of business schools worldwide.



Our international reputation for excellence provides a passport to a global career.

[CLICK HERE](#)
FOR FULL DETAILS OF OUR
UNDERGRADUATE COURSE
OFFERING

Image: Caulfield campus, home of Monash Business School.

Bachelor of Accounting

COURSE CODE: B2029 **CRICOS CODE:** 097256G

LOCATION CAULFIELD
DURATION 3 YEARS
INTAKE FEBRUARY, JULY
FEES **A\$55,900**

PROFESSIONALLY ACCREDITED

DOUBLE DEGREE:
• Business

PREREQUISITE SUBJECT LEVELS and assumed knowledge³

PREREQUISITE: English level 1
assumed knowledge: Maths level 2

For further information,
refer to pages 38-39.

ENGLISH TEST LEVEL⁴
LEVEL A (refer to page 41)

Bachelor of Actuarial Science

COURSE CODE: B2033 **CRICOS CODE:** 097257F

LOCATION CLAYTON
DURATION 3 YEARS
INTAKE FEBRUARY, JULY
FEES **A\$55,900**

ACCELERATED MASTER'S PATHWAY
 PROFESSIONALLY ACCREDITED

DOUBLE DEGREE:
• Commerce

PREREQUISITE SUBJECT LEVELS and assumed knowledge³

PREREQUISITE: English level 1
assumed knowledge: Maths level 3

For further information,
refer to pages 38-39.

ENGLISH TEST LEVEL⁴
LEVEL A (refer to page 41)

SPECIALISATIONS

- Actuarial studies
- Actuarial analytics

Bachelor of Actuarial Science and Master of Actuarial Studies

COURSE CODE: B6060 **CRICOS CODE:** 113701J

LOCATION CLAYTON
DURATION 4 YEARS
INTAKE FEBRUARY, JULY
FEES **A\$55,900**

PROFESSIONALLY ACCREDITED

PREREQUISITE SUBJECT LEVELS and assumed knowledge³

PREREQUISITE: English level 1
assumed knowledge: Maths level 3

For further information,
refer to pages 38-39.

ENGLISH TEST LEVEL⁴
LEVEL A (refer to page 41)

SPECIALISATIONS

- Actuarial studies
- Actuarial analytics

Bachelor of Banking and Finance

COURSE CODE: B2042 **CRICOS CODE:** 084684E

LOCATION CAULFIELD
DURATION 3 YEARS
INTAKE FEBRUARY, JULY
FEES **A\$55,900**

PROFESSIONALLY ACCREDITED

DOUBLE DEGREE:
• Business

PREREQUISITE SUBJECT LEVELS and assumed knowledge³

PREREQUISITE: English level 1
assumed knowledge: Maths level 2

For further information,
refer to pages 38-39.

ENGLISH TEST LEVEL⁴
LEVEL A (refer to page 41)

Bachelor of Business

COURSE CODE: B2000 **CRICOS CODE:** 056414D

LOCATION CAULFIELD
DURATION 3 YEARS
INTAKE FEBRUARY, JULY
FEES **A\$55,900**

ACCELERATED MASTER'S PATHWAY

DOUBLE DEGREES:

- Accounting
- Architectural Studies
- Art History and Curating
- Arts
- Banking and Finance
- Design
- Digital Business
- Education (Honours)⁵
- Fine Art
- Information Technology
- International Relations
- Marketing
- Media Communication

PREREQUISITE SUBJECT LEVELS and assumed knowledge³

PREREQUISITE: English level 1
assumed knowledge: Maths level 2

For further information,
refer to pages 38-39.

ENGLISH TEST LEVEL⁴
LEVEL A (refer to page 41)

MAJOR ▲ MINOR

- | | | |
|---------------------------------------|-------------------------------------|---|
| Accounting ■ ▲ | Business studies ■ | International business ■ ▲ |
| Banking and finance ■ ▲ | Digital economy ■ | Marketing ■ ▲ |
| Business analytics and statistics ■ ▲ | Economics and business strategy ■ ▲ | Sustainability and responsible management ■ ▲ |
| Business law ■ ▲ | Financial econometrics ■ | Taxation ■ ▲ |
| Business management ■ ▲ | Human resource management ■ ▲ | |

Bachelor of Business Administration

COURSE CODE: B2007 CRICOS CODE: 079046M

LOCATION **PENINSULA**
DURATION **3 YEARS**
INTAKE **FEBRUARY, JULY**
FEES: **A\$55,900**

PREREQUISITE SUBJECT LEVELS and assumed knowledge³

PREREQUISITE: English level 1 For further information, refer to pages 38-39.
assumed knowledge: Maths level 1

ENGLISH TEST LEVEL⁴
LEVEL A (refer to page 41)

MAJOR ▲ MINOR

- Accountancy ■ ▲
- Business Administration studies ■
- Econometrics and business decisions ▲
- Finance and economics ■
- Management practice ■ ▲
- Marketing and communications ■ ▲

Bachelor of Commerce

COURSE CODE: B2001 CRICOS CODE: 013382G

LOCATION **CLAYTON**
DURATION **3 YEARS**
INTAKE **FEBRUARY, JULY**
FEES: **A\$55,900**

PREREQUISITE SUBJECT LEVELS and assumed knowledge³

PREREQUISITE: English level 1 For further information, refer to pages 38-39.
assumed knowledge: Maths level 3

ENGLISH TEST LEVEL⁴
LEVEL A (refer to page 41)

MAJOR ▲ MINOR

- Accounting ■ ▲
- Actuarial studies ■ ▲
- Behavioural commerce ■ ▲
- Business analytics ■ ▲
- Business law ▲
- Econometrics ■ ▲
- Economics ■ ▲
- Finance ■ ▲
- Management studies ■ ▲
- Marketing science ■ ▲
- Mathematical foundations of econometrics ■
- Supply chain management ▲
- Sustainability and responsible management ■ ▲

DOUBLE DEGREES:

- Actuarial Science
- Arts
- Biomedical Science
- Computer Science
- Economics
- Engineering (Honours)⁵
- Finance
- Global Studies
- Information Technology
- Laws (Honours)
- Music
- Politics, Philosophy and Economics
- Psychology
- Science

Bachelor of Digital Business

COURSE CODE: B2049 CRICOS CODE: 114241B

LOCATION **CAULFIELD**
DURATION **3 YEARS**
INTAKE **FEBRUARY, JULY**
FEES: **A\$55,900**

PREREQUISITE SUBJECT LEVELS and assumed knowledge³

PREREQUISITE: English level 1 For further information, refer to pages 38-39.
assumed knowledge: Maths level 2

ENGLISH TEST LEVEL⁴
LEVEL A (refer to page 41)

DOUBLE DEGREES:

- Business
- Information Technology

Bachelor of Economics

COURSE CODE: B2031 CRICOS CODE: 001447E

LOCATION **CLAYTON**
DURATION **3 YEARS**
INTAKE **FEBRUARY, JULY**
FEES: **A\$55,900**

PREREQUISITE SUBJECTS LEVELS and assumed knowledge³

PREREQUISITE: English level 1 For further information, refer to pages 38-39.
assumed knowledge: Maths level 3

ENGLISH TEST LEVEL⁴
LEVEL A (refer to page 41)

SPECIALISATIONS

- Business analytics for economics
- Economics and economic policy
- Macroeconomics and financial markets
- Mathematical economics and econometrics

Bachelor of Finance

COURSE CODE: B2034 CRICOS CODE: 084687B

LOCATION **CLAYTON**
DURATION **3 YEARS**
INTAKE **FEBRUARY, JULY**
FEES: **A\$55,900**

PREREQUISITE SUBJECT LEVELS and assumed knowledge³

PREREQUISITE: English level 1 For further information, refer to pages 38-39.
assumed knowledge: Maths level 3

ENGLISH TEST LEVEL⁴
LEVEL A (refer to page 41)

DOUBLE DEGREE:

- Commerce

Bachelor of Marketing

COURSE CODE: B2036 CRICOS CODE: 084685D

LOCATION **CAULFIELD**
DURATION **3 YEARS**
INTAKE **FEBRUARY, JULY**
FEES: **A\$55,900**

PREREQUISITE SUBJECT LEVELS and assumed knowledge³

PREREQUISITE: English level 1 For further information, refer to pages 38-39.
assumed knowledge: Maths level 2

ENGLISH TEST LEVEL⁴
LEVEL A (refer to page 41)

DOUBLE DEGREES:

- Arts
- Business
- Media Communication

COUNTRY/REGION	INTERNATIONAL QUALIFICATION	ENTRY SCORE										
		ACCOUNTING	ACTUARIAL SCIENCE	ACTUARIAL SCIENCE AND ACTUARIAL STUDIES	BANKING AND FINANCE	BUSINESS	BUSINESS ADMINISTRATION	COMMERCE	DIGITAL BUSINESS	ECONOMICS	FINANCE	MARKETING
Australia	2027 ATAR for international students	77.5	90	90	77.5	77.5	70	87.5	75	87.5	87.5	77.5
	UNSW Foundation Studies	7.25	8.5	8.5	7.25	7.25	6.5	8.25	7	8.25	8.25	7.25
	Melbourne University, Trinity College Foundation Studies	74%	86%	86%	74%	74%	67%	83%	72%	83%	83%	74%
	MONASH PATHWAY PROGRAMS											
	Monash University Foundation Year (commencing MUFY in 2027) ⁶	70%	76.25%	76.25%	70%	70%	60%	76.25%	70%	76.25%	76.25%	70%
	Monash Advanced Preparation Program	70%	76.25%	76.25%	70%	70%	60%	76.25%	70%	76.25%	76.25%	70%
Canada	Diploma part 2 ⁷	60%	70%	70%	60%	60%	50%	70%	60%	70%	70%	60%
China	Ontario Secondary School Diploma – Grade 12	80.10%	87.90%	87.90%	80.10%	80.10%	75.40%	86.30%	78.50%	86.30%	86.30%	80.10%
Global	Gaokao	65%	70%	70%	65%	65%	60%	70%	65%	70%	70%	65%
	Advanced Placement	6	8	8	6	6	6	7	6	7	7	6
	SAT (Total score out of 1600)	1180	1290	1290	1180	1180	1120	1270	1160	1270	1270	1180
	GCE A Levels	8.5	12	12	8.5	8.5	7	12	8	12	12	8.5
Hong Kong	International Baccalaureate (IB) Diploma Programme	27	33	33	27	27	25	31	26	31	31	27
	Hong Kong Diploma of Secondary Education	16	21	21	16	16	13	20	15	20	20	16
India	All India Senior School Certificate	72.50%	83%	83%	72.50%	72.50%	66%	81%	70%	81%	81%	72.50%
	Indian School Certificate Examination	67.50%	77%	77%	67.50%	67.50%	60%	76%	65%	76%	76%	67.50%
Indonesia	SMA/3, Indonesia – 10-point scale (6 pass)	7.7	8.8	8.8	7.7	7.7	7.2	8.3	7.5	8.3	8.3	7.7
Malaysia	STPM, Malaysia	8.2	9.7	9.7	8.2	8.2	7.3	9.4	7.9	9.4	9.4	8.2
	UEC, Malaysia	4.6	2.6	2.6	4.6	4.6	6	3	5	3	3	4.6
Republic of Korea	College Scholastic Ability Test	315	350	350	315	315	300	345	310	345	345	315
	High School Diploma, Republic of Korea	74%	86%	86%	74%	74%	67%	83%	72%	83%	83%	74%
Vietnam	High School Diploma	8.21	8.56	8.56	8.21	8.21	8	8.49	8.14	8.49	8.49	8.21

1 No.1 – ShanghaiRanking’s Global Ranking of Academic Subjects, 2025. Top 50 – QS World University Rankings by Subject, 2025.
2 2026 quoted fees, in Australian dollars and are subject to change. Fees are per 48 credit points – a standard full-time course load for a year. TBC – please consult our website or contact the faculty for more up-to-date information.
3 If you have completed an Australian Year 12 or IB Diploma Programme you must satisfy the maths and/or science prerequisite level requirements specified on page 39. If you have completed another international senior secondary qualification, or higher, with maths and/or science, see page 39 for full details regarding assumed knowledge.
4 This is only applicable if you have not satisfied the English requirement; you’re required to complete a Monash-approved English test such as IELTS (Academic), Internet Based TOEFL or Pearson Test of English (Academic). Other English tests may also be accepted and are assessed when you apply to Monash.
5 Only available with select specialisations.
6 Entry scores may differ for students who commence MUFY in 2026 and prior. See our website for full details.
7 The entry requirements published in this guide apply to specific Diploma programs only and are for students commencing their studies in 2027 where applicable credit exemptions are located on our website.
For more information: monash.edu/study

For full course details visit our website, monash.edu/study

Join Australia's top-ranked Faculty of Education where you can choose from two distinct undergraduate pathways.

Pursue a career in teaching with our Bachelor of Education (Honours). When you graduate, you'll have the qualifications to be a registered school teacher or early childhood teacher in Australia.

Or you can drive change as a learning designer across a great variety of industries with the Bachelor of Learning Design and Technology.

INDUSTRY EXPERIENCE

You'll complete 80-90 days of professional experience during the Bachelor of Education (Honours), so you'll be able to apply your skills and knowledge as you learn them.

The Bachelor of Learning Design and Technology offers the opportunity to apply learning to real-life contexts through industry engagement.

CAREER OUTCOMES

Become an early childhood, primary or secondary school teacher or join the growing number of learning designers across the world in sectors such as media, EdTech, entertainment, HR and education.

SPECIALISATIONS (BACHELOR OF EDUCATION – HONOURS)		LOCATION	
0-12 YEARS	Early Childhood and Primary Education	Peninsula	
5-12 YEARS	Primary Education	studied as a single degree	Peninsula
		studied as a double degree	Clayton ²
5-18 YEARS	Primary and Secondary Education	Clayton	
	Primary and Secondary Health and Physical Education	Peninsula	
	Primary and Secondary Inclusive and Special Education	Clayton	
12-18 YEARS	Secondary Health and Physical Education	Peninsula	
	Secondary Education – only available as a double degree	Clayton ²	

1 US News ranking 2025–2026.
 2 You may be required to travel between Caulfield and Clayton campuses depending on which double degree you're studying. Please check our website for all details.
 3 Each specialisation has its own course code. Please see our website for these details.
 4 2026 quoted fees, in Australian dollars and are subject to change. Fees are per 48 credit points – a standard full-time course load for a year.
 5 If you have completed an Australian Year 12 or IB Diploma Programme you must satisfy the maths and/or science prerequisite level requirements specified on page 39. If you have completed another international senior secondary qualification, or higher, with maths and/or science, see page 39 for full details regarding assumed knowledge.
 6 This is only applicable if you have not satisfied the English requirement; you're required to complete a Monash-approved English test such as IELTS (Academic), Internet Based TOEFL or Pearson Test of English (Academic). Other English tests may also be accepted and are assessed when you apply to Monash.
 7 Entry scores may differ for students who commence MUFY in 2026 and prior. See our website for full details.
 8 Completing a diploma in one of the following areas can lead to second-year of a Bachelor of Education (Honours) double degree with Arts, Business or Science: Diploma of Arts (Education Studies), Diploma of Business (Education Studies), Diploma of Science (Education Studies). The entry requirements published in this guide apply to specific Diploma programs only and are for students commencing their studies in 2027 where applicable credit exemptions are located on our website. For more information: monash.edu/study

For full course details visit our website, monash.edu/study

CLICK HERE
 FOR FULL DETAILS OF OUR
 UNDERGRADUATE COURSE OFFERING

Bachelor of Education (Honours)

COURSE CODE: D3001³ CRICOS CODE: 082360G

The degree you're awarded will reflect your chosen specialisation

LOCATION **CLAYTON, PENINSULA**
 DURATION **4 YEARS**
 INTAKE **FEBRUARY**
 FEES⁴ **A\$45,700**

- ADDITIONAL REQUIREMENTS
- PROFESSIONALLY ACCREDITED
- INDUSTRY EXPERIENCE

DOUBLE DEGREES

These are only available with the Primary or Secondary education specialisation.

- Primary education OR
- Secondary education
- +
 - Arts
 - Business
 - Fine Art
 - Music
 - Science

PREREQUISITE SUBJECT LEVELS and assumed knowledge⁵

PREREQUISITE: English level 1
 assumed knowledge: Maths level 1

For further information, refer to pages 38-39.

ENGLISH TEST LEVEL⁶

LEVEL B (refer to page 41)

Bachelor of Learning Design and Technology

COURSE CODE: D2003 CRICOS CODE: 115056F

LOCATION **CLAYTON**
 DURATION **3 YEARS**
 INTAKE **FEBRUARY**
 FEES⁴ **A\$46,600**

- INDUSTRY EXPERIENCE

PREREQUISITE SUBJECT LEVELS and assumed knowledge⁵

PREREQUISITE: English level 1
 assumed knowledge: Not applicable

For further information, refer to pages 38-39.

ENGLISH TEST LEVEL⁶

LEVEL A (refer to page 41)

COUNTRY/REGION	INTERNATIONAL QUALIFICATION	ENTRY SCORE		
		EDUCATION (HONOURS)	LEARNING DESIGN AND TECHNOLOGY	
Australia	2027 ATAR for international students	75	70	
	UNSW Foundation Studies	7	6.5	
	University of Melbourne, Trinity College Foundation Studies	72%	67%	
	MONASH PATHWAY PROGRAMS			
	Monash University Foundation Year (commencing MUFY in 2027) ⁷	70%	63.75%	
	Monash Advanced Preparation Program	70%	63.75%	
	Diploma part 2	65% (applicable to selected double degrees only) ⁸	NA	
Canada	Ontario Secondary School Diploma – Grade 12	78.50%	75.40%	
China	Gaokao	65%	60%	
	Advanced Placement	6	6	
Global	SAT (Total score out of 1600)	1160	1120	
	GCE A Levels	8	7	
	International Baccalaureate (IB) Diploma Programme	26	25	
Hong Kong	Hong Kong Diploma of Secondary Education	15	13	
India	All India Senior School Certificate	70%	66%	
	Indian School Certificate Examination	65%	60%	
Indonesia	SMA3 – 10-point scale (6 pass)	7.5	7.2	
Malaysia	STPM	7.9	7.3	
	UEC	5	6	
Republic of Korea	College Scholastic Ability Test	310	300	
	High School Diploma	72%	67%	
Vietnam	High School Diploma	8.14	8	

Image: Learning and Teaching Building, home of the Faculty of Education, Clayton campus.

ENGINEERING

Monash Engineering sets you on the path to transform the future. As an engineer, you'll develop solutions for global challenges, advancing sustainable technologies and innovations to save lives and benefit society.

You'll study a common first year so you can get a taste of specialisations before deciding which to pursue from your second year.

ENGINEERING SPECIALISATIONS

Choose from the following specialised fields:

- Aerospace engineering
- Biomedical engineering¹
- Chemical engineering
- Civil engineering
- Electrical and computer systems engineering
- Environmental engineering
- Materials engineering
- Mechanical engineering
- Robotics and mechatronics engineering
- Software engineering.

You can also complement your studies with a minor² from different and emerging engineering fields, including artificial intelligence, sustainability, renewable energy and Internet of Things. Additionally, professional practice units are integrated into the curriculum to provide a more enriching and tailored experience, incorporating work placements whilst studying.

INDUSTRY EXPERIENCE

Connect with industry, gain professional experience and get a head start with your career through our internships:

- Co-operative Education Program (Co-op)
- Industry Innovation Program (IIP)
- Industry Experience (IE).

Develop employability skills while you're studying with our programs:

- Continuous Professional Development
- Career Ready Series.

ACCELERATED MASTER'S PATHWAY²

Graduate with both a Bachelor of Engineering (Honours) and a Master of Engineering in just one additional semester. The Master's program enhances your technical expertise and equips you with leadership skills to improve your employment outcomes.

¹ Students intending to pursue the Biomedical engineering specialisation should apply via the Bachelor of Biomedical Engineering (Honours) entry and are required to take BMS1021 as part of the common first year.

² Engineering minors, double degrees and the accelerated master's pathway are only available with some engineering specialisations.

³ 2026 quoted fees, in Australian dollars and are subject to change. Fees are per 48 credit points – a standard full-time course load for a year.

⁴ If you have completed an Australian Year 12 or IB Diploma Programme you must satisfy the maths and/or science prerequisite level requirements specified on page 39. If you have completed another international senior secondary qualification, or higher, with maths and/or science, see page 39 for full details regarding assumed knowledge.

⁵ This is only applicable if you have not satisfied the English requirement; you're required to complete a Monash-approved English test such as IELTS (Academic), Internet Based TOEFL or Pearson Test of English (Academic). Other English tests may also be accepted and are assessed when you apply to Monash.

⁶ A higher level of biology is required. Please note that the biology prerequisite is not applicable for Engineering double degrees with Biomedical Science and Pharmaceutical Science.

⁷ Entry scores may differ for students who commence MUFY in 2026 and prior. See our website for full details.

⁸ The entry requirements published in this guide apply to specific Diploma programs only and are for students commencing their studies in 2027 where applicable credit exemptions are located on our website.

For more information: monash.edu/study

For full course details visit our website, monash.edu/study



CLICK HERE
FOR FULL DETAILS OF OUR
UNDERGRADUATE COURSE OFFERING

Bachelor of Engineering (Honours)

COURSE CODE: E3001 CRICOS CODE: 001722B

The degree you're awarded will reflect your chosen specialisation

LOCATION **CLAYTON**

DURATION **4 YEARS**

INTAKE **FEBRUARY, JULY**

FEES³ **AS\$9,600**

PROFESSIONALLY ACCREDITED

ACCELERATED MASTER'S PATHWAY²

ADDITIONAL REQUIREMENTS

DOUBLE DEGREES²:

- Architectural Design
- Arts
- Biomedical Science
- Commerce
- Computer Science
- Design
- Information Technology
- Laws (Honours)
- Pharmaceutical Science
- Science

PREREQUISITE SUBJECT LEVELS and assumed knowledge⁴

PREREQUISITE: English level 1

assumed knowledge: Maths level 3 and Chemistry, Physics or Biology⁶

For further information,
refer to pages 38-39.

ENGLISH TEST LEVEL⁵

LEVEL A (refer to page 41)

SPECIALISATIONS

- Aerospace engineering
- Biomedical engineering¹
- Chemical engineering
- Civil engineering
- Electrical and computer systems engineering
- Environmental engineering
- Materials engineering
- Mechanical engineering
- Robotics and mechatronics engineering
- Software engineering

COUNTRY/REGION	INTERNATIONAL QUALIFICATION	ENTRY SCORE	
		ENGINEERING (HONOURS)	ENGINEERING (HONOURS) / MASTER'S ACCELERATED PATHWAY
	2027 ATAR for international students	85	90
	UNSW Foundation Studies	8	NA
	University of Melbourne, Trinity College Foundation Studies	81%	NA
	MONASH PATHWAY PROGRAMS		
	Monash University Foundation Year (commencing MUFY in 2027) ⁷	76.25%	88.75%
	Monash Advanced Preparation Program	76.25%	88.75%
	Diploma part 2 ⁸	60%	NA
Canada	Ontario Secondary School Diploma – Grade 12	84.80%	87.90%
China	Gaokao	75%	80%
	Advanced Placement	7	8
	SAT (Total score out of 1600)	1240	1290
	GCE A Levels	10	12
	International Baccalaureate (IB) Diploma Programme	30	33
Hong Kong	Hong Kong Diploma of Secondary Education	19	21
India	All India Senior School Certificate	80%	83%
India	Indian School Certificate Examination	75%	77%
Indonesia	SMA3 – 10-point scale (6 pass)	8.1	8.8
Malaysia	STPM	9.1	9.7
Malaysia	UEC	3.4	2.6
Republic of Korea	College Scholastic Ability Test	340	350
Republic of Korea	High School Diploma	81%	86%
Vietnam	High School Diploma	8.42	8.56

Image: Monash Engineering student at work,
Faculty of Engineering, Clayton campus.

INFORMATION TECHNOLOGY

RANKED
NO.2 IN AUSTRALIA
FOR COMPUTER SCIENCE¹

Monash is the only university in the prestigious Group of Eight with an entire faculty dedicated to information technology. So you can rest assured that IT isn't a side interest to us – it's everything that we do.

Comprehensive and flexible, our undergraduate programs cover every major area of our field, giving you well-rounded and specialist expertise at the same time.

FACILITIES

Our cutting-edge spaces are primarily located at Monash Clayton campus and include our:

- Mixed Reality Studio
- Cybersecurity Studio
- Immersive Analytics Lab
- Makerspaces
- Human Interaction Lab
- 360-seat teaching space

We also have world-class facilities at Caulfield campus, such as our SensiLab – the home of computational creativity.

INDUSTRY EXPERIENCE

We give you plenty of opportunity to gain valuable practical experience, securing your employability in the job market. Our undergraduate courses provide:

- Industry-based Learning (IBL), or
- IT Student Teams, or
- Industry Experience Studio Projects.

SCHOLARSHIPS AND GRANTS

All students who participate in our flagship IBL internship program receive a generous grant per placement. We also offer a number of other scholarships to promote equity and excellence, such as our Women in Technology scholarship.

PROFESSIONAL RECOGNITION

All our courses are accredited by the Australian Computer Society – the professional association for information and communications technology in Australia.



CLICK HERE
FOR FULL DETAILS OF OUR
UNDERGRADUATE COURSE OFFERING

1 Times Higher Education World University Rankings by Subject, 2025.
 2 2026 quoted fees, in Australian dollars and are subject to change. Fees are per 48 credit points – a standard full-time course load for a year.
 3 If you have completed an Australian Year 12 or IB Diploma Programme you must satisfy the maths and/or science prerequisite level requirements specified on page 39. If you have completed another international senior secondary qualification, or higher, with maths and/or science, see page 39 for full details regarding assumed knowledge.
 4 This is only applicable if you have not satisfied the English requirement; you're required to complete a Monash-approved English test such as IELTS (Academic), Internet Based TOEFL or Pearson Test of English (Academic). Other English tests may also be accepted and are assessed when you apply to Monash.
 5 Only available with select Engineering specialisations.
 6 Entry scores may differ for students who commence MUFY in 2026 and prior. See our website for full details.
 7 The entry requirements published in this guide apply to specific Diploma programs only and are for students commencing their studies in 2027 where applicable credit exemptions are located on our website.
 For more information: monash.edu/study
 For full course details visit our website, monash.edu/study

Bachelor of Computer Science

COURSE CODE: C2001 **CRICOS CODE:** 079336A

The degree you're awarded will reflect your chosen specialisation, except if you're studying the Algorithm and software specialisation, which receives the Bachelor of Computer Science.

LOCATION CLAYTON
DURATION 3 YEARS
INTAKE FEBRUARY, JULY
FEES² **A\$55,500**

PROFESSIONALLY ACCREDITED

DOUBLE DEGREES:

- Commerce
- Engineering (Honours)⁵
- Laws (Honours)
- Science

PREREQUISITE SUBJECT LEVELS and assumed knowledge³

PREREQUISITE: English level 1
assumed knowledge: Maths level 3

For further information, refer to pages 38-39.

ENGLISH TEST LEVEL⁴
LEVEL A (refer to page 41)

SPECIALISATIONS

- Algorithms and software
- Artificial intelligence
- Cybersecurity
- Data science

Bachelor of Computer Science Advanced (Honours)

COURSE CODE: C3001 **CRICOS CODE:** 085350G

LOCATION CLAYTON
DURATION 4 YEARS
INTAKE FEBRUARY
FEES² **A\$54,400**

PROFESSIONALLY ACCREDITED

PREREQUISITE SUBJECT LEVELS and assumed knowledge³

PREREQUISITE: English level 1
assumed knowledge: Maths level 3

For further information, refer to pages 38-39.

ENGLISH TEST LEVEL⁴
LEVEL A (refer to page 41)

SPECIALISATIONS

- Algorithms and software
- Artificial intelligence
- Cybersecurity
- Data science

Bachelor of Information Technology

COURSE CODE: C2000 **CRICOS CODE:** 085120M

LOCATION CLAYTON
DURATION 3 YEARS
INTAKE FEBRUARY, JULY
FEES² **A\$54,400**

PROFESSIONALLY ACCREDITED

DOUBLE DEGREES:

- Architectural Studies
- Arts
- Business
- Commerce
- Criminology
- Design
- Digital Business
- Engineering (Honours)⁵
- Fine Art
- Global Studies
- Laws (Honours)
- Science

PREREQUISITE SUBJECT LEVELS and assumed knowledge³

PREREQUISITE: English level 1
assumed knowledge: Maths level 1

For further information, refer to pages 38-39.

ENGLISH TEST LEVEL⁴
LEVEL A (refer to page 41)

MAJOR ▲ MINOR

- 3D modelling and animation ▲
- Applied cybersecurity ■
- Business information systems ■ ▲
- Computer science ▲
- Cybersecurity ▲
- Data science ▲
- Games and immersive media ■
- Games design ▲
- Games development ▲
- Human computer interaction ▲
- Mobile apps development ▲
- Software development ■ ▲
- Software engineering ▲
- Web development ▲

COUNTRY/REGION	INTERNATIONAL QUALIFICATION	ENTRY SCORE		
		COMPUTER SCIENCE	COMPUTER SCIENCE ADVANCED (HONOURS)	INFORMATION TECHNOLOGY
Australia	2027 ATAR for international students	80	90	75
	UNSW Foundation Studies	7.5	NA	7
	University of Melbourne, Trinity College Foundation Studies	77%	NA	72%
	MONASH PATHWAY PROGRAMS			
	Monash University Foundation Year (commencing MUFY in 2027) ⁶	70%	NA	70%
	Monash Advanced Preparation Program	70%	NA	70%
	Diploma part 2 ⁷	60%	NA	55%
Canada	Ontario Secondary School Diploma – Grade 12	81.60%	87.90%	78.50%
China	Gaokao	70%	75%	65%
	Advanced Placement	7	8	6
Global	SAT (Total score out of 1600)	1190	1290	1160
	GCE A Levels	9	12	8
	International Baccalaureate (IB) Diploma Programme	28	33	26
Hong Kong	Hong Kong Diploma of Secondary Education	17	21	15
India	All India Senior School Certificate	75%	83%	70%
	Indian School Certificate Examination	70%	77%	65%
Indonesia	SMA3 – 10-point scale (6 pass)	7.9	8.8	7.5
Malaysia	STPM	8.5	9.7	7.9
	UEC	4.2	2.6	5
Republic of Korea	College Scholastic Ability Test	320	350	310
	High School Diploma	77%	86%	72%
Vietnam	High School Diploma	8.28	8.56	8.14

RANKED
NO.1 IN AUSTRALIA
AND
NO.36 IN THE WORLD¹

Monash Law is one of Australia's largest and most prestigious law schools.

We offer a range of undergraduate, postgraduate and research degrees, and provide legal education and training to more than 3500 undergraduate and graduate students at any time.

WORLD-CLASS FACILITIES

We have a broad teaching base, strong international links and an excellent reputation.

Our Clayton campus is the hub for our undergraduate law courses. Our state-of-the-art moot court provides a realistic courtroom setting for experiential learning about court proceedings and participating in mooted competitions.

INTERNATIONAL STUDY

You can include an international study program in your Monash Law course to help you learn about different legal traditions and systems to prepare for a legal career in a global environment. The many options include student exchange, study abroad, and Monash Global Campus Intensives at our Malaysian and Italian locations.

DOUBLE DEGREES

You can study the Bachelor of Laws (Honours) as a single degree or combine your law interest with another course and study a double degree. In a double degree, you undertake both qualifications simultaneously, enabling you to complete your degrees in a shorter time than if you took each degree separately, and you'll be awarded two Monash degrees.

CLINICAL LEGAL GUARANTEE (Industry experience)

Clinical legal education is an important way for students to understand and appreciate how theory comes to life as it's put into practice. You are guaranteed the opportunity to add real legal experience to your degree through a range of Clinical Legal Education practice subjects. You may choose a placement at the Monash Law Clinics, where you'll help people unable to access justice elsewhere, or an internship or in-house clinic with one of our many partner organisations.

CAREER OUTCOMES

Monash Law graduates pursue legal careers in national and international law firms and legal practices in large city centres and suburban and regional areas. They also provide advice as in-house legal counsel to corporate, government or social justice organisations in countries worldwide.

If you're not thinking of becoming a lawyer, Monash Law can help you embark on non-legal career paths such as:

- government and politics
- banking and finance
- business consultancy and management
- science and engineering
- environmental protection and development
- project management
- international organisations, such as the United Nations
- non-government organisations such as the Red Cross and Amnesty International.

COUNTRY/REGION	INTERNATIONAL QUALIFICATION	ENTRY SCORE	LAWS (HONOURS)
Australia	2027 ATAR for international students		95
	UNSW Foundation Studies		9
	University of Melbourne, Trinity College Foundation Studies		90%
	MONASH PATHWAY PROGRAMS		
	Monash University Foundation Year (commencing MUFY in 2027) ²		85%
	Monash Advanced Preparation Program		85%
Canada	Diploma part 2		NA
	Ontario Secondary School Diploma – Grade 12		91%
China	Gaokao		80%
	Advanced Placement		9
Global	SAT (Total score out of 1600)		1360
	GCE A Levels		13
	International Baccalaureate (IB) Diploma Programme		36
Hong Kong	Hong Kong Diploma of Secondary Education		23
India	All India Senior School Certificate		85%
	Indian School Certificate Examination		80%
Indonesia	SMA3 – 10-point scale (6 pass)		9
Malaysia	STPM		10.3
	UEC		1.8
Republic of Korea	College Scholastic Ability Test		365
	High School Diploma		90%
Vietnam	High School Diploma		8.7

Image: Monash students outside the Supreme Court, Melbourne.

Bachelor of Laws (Honours)

COURSE CODE: L3001 CRICOS CODE: 080585G

LOCATION **CLAYTON**

DURATION **4 YEARS**

INTAKE **FEBRUARY, JULY**

FEES³ **A\$55,700**

PROFESSIONALLY ACCREDITED

DOUBLE DEGREES:

- Arts
- Biomedical Science
- Commerce
- Computer Science
- Criminology
- Engineering (Honours)⁵
- Global Studies
- Information Technology
- International Relations
- Music
- Politics, Philosophy and Economics
- Psychology
- Science

PREREQUISITE SUBJECT LEVELS and assumed knowledge

PREREQUISITE: English level 2

assumed knowledge: Not applicable

ENGLISH TEST LEVEL⁴

LEVEL C (refer to page 41)

For further information, refer to pages 38-39.

[CLICK HERE](#)
FOR FULL DETAILS OF OUR
UNDERGRADUATE COURSE OFFERING

¹ ShanghaiRanking Global Ranking of Academic Subjects, 2025.

² Entry scores may differ for students who commence MUFY in 2026 and prior. See our website for full details.

³ 2026 quoted fees, in Australian dollars and are subject to change. Fees are per 48 credit points – a standard full-time course load for a year.

⁴ This is only applicable if you have not satisfied the English requirement; you're required to complete a Monash-approved English test such as IELTS (Academic), Internet Based TOEFL or Pearson Test of English (Academic). Other English tests may also be accepted and are assessed when you apply to Monash.

⁵ Only available with select Engineering specialisations.

For full course details visit our website, monash.edu/study

MEDICINE, NURSING AND HEALTH SCIENCES

Your future in health starts here.

At the Faculty of Medicine, Nursing and Health Sciences, we're shaping the future of healthcare. As one of Australia's largest and most highly-ranked educators of doctors, nurses and allied health professionals, we offer a diverse range of programs across the full spectrum of health disciplines.



HANDS-ON CLINICAL LEARNING

More opportunities for placements, research and mentoring.



EMPLOYABILITY-FOCUSED CURRICULUM

Comprehensive programs designed to get you work-ready.



CONNECTED TO HEALTHCARE EXCELLENCE

Join a faculty linked to Australia's leading healthcare providers.

KEY TEACHING AREAS:

- Biomedical Science
- Health Sciences
- Medicine
- Nursing and Midwifery
- Nutrition and Dietetics
- Occupational Therapy
- Paramedicine
- Physiotherapy
- Psychology
- Public Health
- Radiography and Medical Imaging
- Speech Pathology

TEACHING AND LEARNING FACILITIES

Our cutting-edge facilities feature the **Biomedical Learning and Teaching Building**, a central hub for undergraduate students learning biomedical sciences. This facility seamlessly integrates practical and informal learning spaces, providing a unified location for academic exploration.

Additionally, our Clayton campus is home to Australia's first specialist heart hospital – the **Victorian Heart Hospital**. This groundbreaking institution signifies a new era of integrated heart research and clinical excellence in Australia. Under one roof, patients have access to world-leading cardiac care, supported by pioneering research led by Monash University's Victorian Heart Institute.

Through our bench-to-bedside approach, you'll learn from experts who are actively shaping the future of healthcare, ensuring your education is grounded in real-world impact from day one.

PROFESSIONAL ACCREDITATION

Our courses in medicine, nursing and midwifery, occupational therapy, physiotherapy, paramedicine, and radiography and medical imaging are accredited – ensuring your course meets professional standards and prepares you for careers in your chosen field.

Image: Students in our Clinical Learning Environment, Faculty of Medicine, Nursing and Health Sciences, Peninsula campus.

SCHOLARS PROGRAM

Our courses in biomedical science, nursing and nutrition science offer a Scholars Program for high achievers. The Scholars Program provides you with the opportunity to be mentored by our senior students and leading researchers.

[CLICK HERE](#) FOR FULL DETAILS OF OUR UNDERGRADUATE COURSE OFFERING

RANKINGS

Monash Medicine, Nursing and Health Sciences has achieved excellent rankings for many subject areas, with the following falling in the top 50 rankings:

NO.3 IN AUSTRALIA AND **NO.13** IN THE WORLD FOR NURSING¹

RANKED NO.5 IN AUSTRALIA AND **NO.40** IN THE WORLD FOR PUBLIC HEALTH¹

RANKED NO.32 FOR ANATOMY AND PHYSIOLOGY²

RANKED NO.47 FOR MEDICINE²

RANKED NO.2 IN AUSTRALIA AND **NO.31** IN THE WORLD FOR CLINICAL AND HEALTH³

¹ Shanghai Academic Ranking of World Universities by Subject, 2025.
² QS World rankings by subject, 2025.
³ Times Higher Education World University Rankings by subject, 2025.

Bachelor of Biomedical Science

COURSE CODE: M2003 CRICOS CODE: 028805K

LOCATION **CLAYTON**
DURATION **3 YEARS**
INTAKE **FEBRUARY, JULY**
FEES² **AS\$4,900**

SCHOLARS PROGRAM⁵

DOUBLE DEGREES:

- Commerce
- Engineering (Honours)⁶
- Laws (Honours)
- Science

PREREQUISITE SUBJECT LEVELS and assumed knowledge³

PREREQUISITE: English level 1
assumed knowledge: Chemistry and Maths level 2 or Physics

For further information, refer to pages 38-39.

ENGLISH TEST LEVEL⁴

LEVEL B (refer to page 41)

Bachelor of Health Sciences

COURSE CODE: M2014 CRICOS CODE: 068365J

LOCATION **CAULFIELD**
DURATION **3 YEARS**
INTAKE **FEBRUARY, JULY**
FEES² **AS\$4,100**

DOUBLE DEGREE:

- Arts

PREREQUISITE SUBJECT LEVELS and assumed knowledge³

PREREQUISITE: English level 1
assumed knowledge: Not applicable

For further information, refer to pages 38-39.

ENGLISH TEST LEVEL⁴

LEVEL A (refer to page 41)

Bachelor of Medical Science and Doctor of Medicine¹

COURSE CODE: M6011 CRICOS CODE: 088889D

LOCATION **CLAYTON**
DURATION **5 YEARS**
INTAKE **FEBRUARY**
FEES² **AS\$101,600**

- ADDITIONAL REQUIREMENTS
- CLINICAL PLACEMENTS
- PROFESSIONALLY ACCREDITED

PREREQUISITE SUBJECT LEVELS

PREREQUISITE: English level 2 and Chemistry

For further information, refer to pages 38-39.

ENGLISH TEST LEVEL⁴

LEVEL C (refer to page 41)

Bachelor of Nursing¹

COURSE CODE: M2006 **CRICOS CODE:** 075119J

LOCATION **CLAYTON, PENINSULA**
 DURATION **3 YEARS**
 INTAKE **FEBRUARY**
 FEES² **A\$44,600**

- ADDITIONAL REQUIREMENTS⁷
- CLINICAL PLACEMENTS
- PROFESSIONALLY ACCREDITED
- SCHOLARS PROGRAM⁵

PREREQUISITE SUBJECT LEVELS and assumed knowledge³

PREREQUISITE: English level 1
 assumed knowledge: Maths level 1

For further information, refer to pages 38-39.

ENGLISH TEST LEVEL⁴

LEVEL F (refer to page 41)

Bachelor of Nursing and Bachelor of Midwifery (Honours)¹

COURSE CODE: M3007 **CRICOS CODE:** 089708F

LOCATION **PENINSULA**
 DURATION **4 YEARS**
 INTAKE **FEBRUARY**
 FEES² **A\$42,900**

- ADDITIONAL REQUIREMENTS⁷
- CLINICAL PLACEMENTS
- PROFESSIONALLY ACCREDITED

PREREQUISITE SUBJECT LEVELS and assumed knowledge³

PREREQUISITE: English level 1
 assumed knowledge: Maths level 1

For further information, refer to pages 38-39.

ENGLISH TEST LEVEL⁴

LEVEL F (refer to page 41)

Bachelor of Nutrition Science

COURSE CODE: M2001 **CRICOS CODE:** 075117M

LOCATION **CLAYTON**
 DURATION **3 YEARS**
 INTAKE **FEBRUARY**
 FEES² **A\$49,700**

- PROFESSIONALLY ACCREDITED
- SCHOLARS PROGRAM⁵

PREREQUISITE SUBJECT LEVELS and assumed knowledge³

PREREQUISITE: English level 1
 assumed knowledge: Not applicable

For further information, refer to pages 38-39.

ENGLISH TEST LEVEL⁴

LEVEL B (refer to page 41)

Bachelor of Occupational Therapy (Honours)¹

COURSE CODE: M3001 **CRICOS CODE:** 082509C

LOCATION **PENINSULA**
 DURATION **4 YEARS**
 INTAKE **FEBRUARY**
 FEES² **A\$52,600**

- ADDITIONAL REQUIREMENTS
- PROFESSIONALLY ACCREDITED
- PLACEMENTS

PREREQUISITE SUBJECT LEVELS and assumed knowledge³

PREREQUISITE: English level 1
 assumed knowledge: Not applicable

For further information, refer to pages 38-39.

ENGLISH TEST LEVEL⁴

LEVEL B (refer to page 41)

Bachelor of Paramedicine¹

COURSE CODE: M2011 **CRICOS CODE:** 094996F

LOCATION **PENINSULA**
 DURATION **3 YEARS**
 INTAKE **FEBRUARY**
 FEES² **A\$45,100**

- ADDITIONAL REQUIREMENTS
- CLINICAL PLACEMENTS
- PROFESSIONALLY ACCREDITED

PREREQUISITE SUBJECT LEVELS and assumed knowledge³

PREREQUISITE: English level 1
 assumed knowledge: Not applicable

For further information, refer to pages 38-39.

ENGLISH TEST LEVEL⁴

LEVEL B (refer to page 41)

Bachelor of Physiotherapy (Honours)¹

COURSE CODE: M3002 **CRICOS CODE:** 064804A

LOCATION **PENINSULA**
 DURATION **4 YEARS**
 INTAKE **FEBRUARY**
 FEES² **A\$64,200**

- ADDITIONAL REQUIREMENTS
- CLINICAL PLACEMENTS
- PROFESSIONALLY ACCREDITED

PREREQUISITE SUBJECT LEVELS and assumed knowledge³

PREREQUISITE: English level 2
 assumed knowledge: Two of Chemistry, Biology, Maths level 3 or Physics.

For further information, refer to pages 38-39.

ENGLISH TEST LEVEL⁴

LEVEL C (refer to page 41)

Bachelor of Psychology

COURSE CODE: M2018 **CRICOS CODE:** 108900M

LOCATION **CLAYTON**
 DURATION **3 YEARS**
 INTAKE **FEBRUARY, JULY**
 FEES² **A\$48,600**

- PROFESSIONALLY ACCREDITED

PREREQUISITE SUBJECT LEVELS and assumed knowledge³

PREREQUISITE: English level 1
 assumed knowledge: Not applicable

For further information, refer to pages 38-39.

ENGLISH TEST LEVEL⁴

LEVEL A (refer to page 41)

DOUBLE DEGREES:

- Arts
- Laws (Honours)
- Commerce
- Science

Bachelor of Public Health

COURSE CODE: M2012 **CRICOS CODE:** 094997E

LOCATION **CAULFIELD**
 DURATION **3 YEARS**
 INTAKE **FEBRUARY**
 FEES² **A\$45,100**

- PROFESSIONALLY ACCREDITED
- ADDITIONAL REQUIREMENTS
- CLINICAL PLACEMENTS

PREREQUISITE SUBJECT LEVELS and assumed knowledge³

PREREQUISITE: English level 1
 assumed knowledge: Not applicable

For further information, refer to pages 38-39.

ENGLISH TEST LEVEL⁴

LEVEL A (refer to page 41)

Bachelor of Radiography and Medical Imaging (Honours)¹

COURSE CODE: M3006 **CRICOS CODE:** 080032G

LOCATION **CLAYTON**
 DURATION **4 YEARS**
 INTAKE **FEBRUARY**
 FEES² **A\$60,900**

- PROFESSIONALLY ACCREDITED
- ADDITIONAL REQUIREMENTS
- CLINICAL PLACEMENTS

PREREQUISITE SUBJECT LEVELS and assumed knowledge³

PREREQUISITE: English level 2
 assumed knowledge: Maths level 3 and Biology or Physics

For further information, refer to pages 38-39.

ENGLISH TEST LEVEL⁴

LEVEL C (refer to page 41)

Bachelor of Speech Pathology (Honours)¹

COURSE CODE: M3008 **CRICOS CODE:** 117403J

LOCATION **PENINSULA**
 DURATION **4 YEARS**
 INTAKE **FEBRUARY**
 FEES² **A\$52,600**

- PROFESSIONALLY ACCREDITED
- ADDITIONAL REQUIREMENTS
- CLINICAL PLACEMENTS

PREREQUISITE SUBJECT LEVELS and assumed knowledge³

PREREQUISITE: English level 2
 assumed knowledge: One of Biology, Chemistry, Maths level 3, Physics, Health and Human Development, or Physical Education

For further information, refer to pages 38-39.

ENGLISH TEST LEVEL⁴

LEVEL D (refer to page 41)

COUNTRY/ REGION	INTERNATIONAL QUALIFICATION	ENTRY SCORE														
		BIOMEDICAL SCIENCE	HEALTH SCIENCES	MEDICAL SCIENCE AND DOCTOR OF MEDICINE ¹	NURSING ¹		NURSING AND MIDWIFERY (HONOURS) ¹	NUTRITION SCIENCE	OCCUPATIONAL THERAPY (HONOURS) ¹	PARAMEDICINE ¹	PHYSIOTHERAPY (HONOURS) ¹	PSYCHOLOGY	PUBLIC HEALTH	RADIOGRAPHY & MEDICAL IMAGING (HONOURS) ¹	SPEECH PATHOLOGY	
Australia	2027 ATAR for international students	90	70	97.5	77.5	70	82.5	72.5	82.5	80	92.5	85	72.5	92.5	80	
	UNSW Foundation Studies	8.5	6.5	9.5	7.25	6.5	7.75	6.75	7.75	7.5	8.75	8	6.75	8.75	7.5	
	Melbourne University, Trinity College Foundation Studies	86%	67%	95%	74%	67%	79%	70%	79%	77%	88%	81%	70%	88%	77%	
	MONASH PATHWAY PROGRAMS															
	Monash University Foundation Year (commencing MUJY in 2027) ⁹	83.50%	67.50%	94%	72.50%	67.50%	77.50%	67.50%	82.50%	77.50%	90%	76.25%	71%	90%	82.50%	
	Monash Advanced Preparation Program	83.50%	67.50%	NA	72.50%	67.50%	77.50%	67.50%	82.50%	77.50%	90%	76.25%	71%	90%	82.50%	
Canada	Diploma part 2	NA	NA	NA	NA	NA	NA	NA	NA	NA	NA	NA	NA	NA	NA	
Canada	Ontario Secondary School Diploma – Grade 12	87.90%	75.40%	92.50%	80.10%	75.40%	83.20%	77%	83.20%	81.60%	89.40%	84.80%	77%	89.40%	81.60%	
China	Gaokao	80%	65%	NA	65%	65%	70%	65%	70%	65%	80%	70%	65%	80%	65%	
Global	Advanced Placement	8	6	10	6	6	7	6	7	7	8	7	6	8	7	
	SAT (Total score out of 1600)	1290	1120	1420	1180	1120	1220	1140	1220	1190	1320	1240	1140	1320	1190	
	GCE A Levels	12	7	15	8.5	7	9.5	7.5	9.5	9	13	10	7.5	13	9	
Hong Kong	International Baccalaureate (IB) Diploma Programme	33	25	39	27	25	29	25	29	28	35	30	25	35	28	
	Hong Kong Diploma of Secondary Education	21	13	25	16	13	18	14	18	17	22	19	14	22	17	
India	All India Senior School Certificate	83%	66%	90%	72.50%	66%	78.50%	67.50%	78.50%	75%	83.50%	80%	67.50%	83.50%	75%	
	Indian School Certificate Examination	77%	60%	85%	67.50%	60%	72.50%	62.50%	72.50%	70%	78.50%	75%	62.50%	78.50%	70%	
Indonesia	SMA3 – 10-point scale (6 pass)	8.8	7.2	9.5	7.7	7.2	8	7.4	8	7.9	8.9	8.1	7.4	8.9	7.9	
Malaysia	STPM	9.7	7.3	11	8.2	7.3	8.8	7.6	8.8	8.5	10	9.1	7.6	10	8.5	
	UEC	2.6	6	1	4.6	6	3.8	5.5	3.8	4.2	2.2	3.4	5.5	2.2	4.2	
Republic of Korea	College Scholastic Ability Test	350	300	380	315	300	330	305	330	320	360	340	305	360	320	
	High School Diploma	86%	67%	95%	74%	67%	79%	70%	79%	77%	88%	81%	70%	88%	77%	
Vietnam	High School Diploma	8.56	8	9	8.21	8	8.35	8.07	8.35	8.28	8.63	8.42	8.07	8.63	8.28	

1 There are limited places available in this course. The entry score is only indicative.
 2 2026 quoted fees, in Australian dollars and are subject to change. Fees are per 48 credit points – a standard full-time course load for a year.
 3 If you have completed an Australian Year 12 or IB Diploma Programme you must satisfy the maths and/or science prerequisite level requirements specified on page 39. If you have completed another international senior secondary qualification, or higher, with maths and/or science, see page 39 for full details regarding assumed knowledge.
 4 This is only applicable if you have not satisfied the English requirement; you're required to complete a Monash-approved English test such as IELTS (Academic), Internet Based TOEFL or Pearson Test of English (Academic). Other English tests may also be accepted and are assessed when you apply to Monash.
 5 High-achieving students may qualify for the Scholars Program where higher entry requirements apply; see our website for more details.
 6 Only available with select Engineering specialisations.
 7 Other rules apply to comply with the Australian Health Practitioner Regulation Agency registration standards and English language requirements. Further information is available at monash.edu/study
 8 Semester 2 intake is only applicable to students who have completed units that meet the Semester 1 course requirements (in addition to the standard entry requirements).
 9 Entry scores may differ for students who commence MUJY in 2026 and prior. See our website for full details.

For full course details visit our website, monash.edu/study

PHARMACY AND PHARMACEUTICAL SCIENCES

RANKED NO.1 IN AUSTRALIA AND NO.4 IN THE WORLD¹

Our pharmacy degree will prepare you to be a medicines expert and work on the front line of modern patient care. Our pharmaceutical science programs provide expertise in the drug discovery pipeline, preparing you for a career in drug discovery, development and allied industries.

Study as part of a close-knit community at our specialist campus located in Australia's premier health and biomedical precinct in Parkville.

INDUSTRY EXPERIENCE

Pharmacy students undertake industry placements from early in their course, and those studying the Bachelor of Pharmacy (Honours)/Master of Pharmacy complete a paid internship during their final year.

Pharmaceutical science students have the opportunity to undertake a research or industry placement, or a Monash Flagship Rich Educational Experience.

SCHOLARS PROGRAM

We offer a Scholars Program for high achievers. This provides exclusive learning opportunities, such as seminars and an invitation to an annual Dean's event. When you successfully complete your degree, your award will reflect your Scholars Program².

CLICK HERE FOR FULL DETAILS OF OUR UNDERGRADUATE COURSE OFFERING

PHARMACY COURSE HIGHLIGHTS

- Pharmacists are in demand. The majority of international graduates find full-time employment shortly after completing their studies³.
- We were the first university in Australia to introduce a double bachelor and master degree where the fifth year incorporates a paid internship.
- International students can choose to exit the program after four years with the Bachelor of Pharmacy (Honours) and return home to complete their registration requirements, or they can stay with us and complete their master's while earning a salary as an intern.

PHARMACEUTICAL SCIENCE HIGHLIGHTS

- Pharmaceutical Science equips you with the skills to research and develop new medicines, preparing you for careers in the global pharmaceutical sector. Further, the skills you'll learn will enable you to work in a wide range of chemistry-related industries, including skincare, coatings, agriculture and food science.
- Our courses provide extensive lab time and expert training on industry-standard instrumentation.
- Victoria is a global hub for biomedical research, medical technology and pharmaceutical manufacturing. With companies such as CSL, Pfizer, Novartis, Merck, Bristol Myers Squibb and GSK located in Victoria, there's strong demand for pharmaceutical science graduates.

Image: Monash pharmaceutical science student working in the lab, Faculty of Pharmacy and Pharmaceutical Sciences, Parkville campus.

Bachelor of Pharmaceutical Science

COURSE CODE: P2001 **CRICOS CODE:** 058486E

LOCATION PARKVILLE
DURATION 3 YEARS
INTAKE FEBRUARY
FEES* A\$55,600

INDUSTRY EXPERIENCE

DOUBLE DEGREE:

- Engineering (Honours)⁷

PREREQUISITE SUBJECT LEVELS and assumed knowledge⁵

PREREQUISITE: English level 1
assumed knowledge: Maths level 3 and Chemistry

ENGLISH TEST LEVEL⁶
LEVEL A (refer to page 41)

For further information, refer to pages 38-39.

Bachelor of Pharmaceutical Science Advanced (Honours)

COURSE CODE: P3002 **CRICOS CODE:** 077237J

LOCATION PARKVILLE
DURATION 4 YEARS
INTAKE FEBRUARY
FEES* A\$55,600

INDUSTRY EXPERIENCE
 SCHOLARS PROGRAM²

PREREQUISITE SUBJECT LEVELS and assumed knowledge⁵

PREREQUISITE: English level 1
assumed knowledge: Maths level 3 and Chemistry

ENGLISH TEST LEVEL⁶
LEVEL A (refer to page 41)

For further information, refer to pages 38-39.

Bachelor of Pharmacy (Honours)

COURSE CODE: P3001 **CRICOS CODE:** 082370F

LOCATION PARKVILLE
DURATION 4 YEARS
INTAKE FEBRUARY
FEES* A\$60,100

INDUSTRY EXPERIENCE

PREREQUISITE SUBJECT LEVELS and assumed knowledge⁵

PREREQUISITE: English level 1
assumed knowledge: Maths level 3 and Chemistry

ENGLISH TEST LEVEL⁶
LEVEL A (refer to page 41)

For further information, refer to pages 38-39.

Bachelor of Pharmacy (Honours) and Master of Pharmacy

COURSE CODE: P6001 **CRICOS CODE:** 089709E

LOCATION PARKVILLE
DURATION 5 YEARS
INTAKE FEBRUARY
FEES* A\$60,100

SCHOLARS PROGRAM²
 INDUSTRY EXPERIENCE

PREREQUISITE SUBJECT LEVELS and assumed knowledge⁵

PREREQUISITE: English level 1
assumed knowledge: Maths level 3 and Chemistry

ENGLISH TEST LEVEL⁶
LEVEL A (refer to page 41)

For further information, refer to pages 38-39.

COUNTRY/REGION	INTERNATIONAL QUALIFICATION	PHARMACEUTICAL SCIENCE	ENTRY SCORE			
			PHARMACEUTICAL SCIENCE ADVANCED (HONOURS)	PHARMACY (HONOURS)	PHARMACY (HONOURS)/ MASTER OF PHARMACY	PHARMACY (HONOURS) (SCHOLARS PROGRAM)/ MASTER OF PHARMACY
Australia	2027 ATAR for international students	82.50	90	97.50	90	97.50
	UNSW Foundation Studies	7.75	8.5	9.5	8.5	9.5
	University of Melbourne, Trinity College Foundation Studies	79%	86%	95%	86%	95%
	MONASH PATHWAY PROGRAMS					
	Monash University Foundation Year (commencing MUFY in 2027) ⁹	72.50%	75%	85%	75%	85%
	Monash Advanced Preparation Program	72.50%	75%	85%	75%	85%
Canada	Diploma part 2	NA	NA	NA	NA	NA
	Ontario Secondary School Diploma – Grade 12	83.20%	87.90%	92.50%	87.90%	92.50%
China	Gaokao	65%	70%	NA	70%	NA
	Advanced Placement	7	8	10	8	10
Global	SAT (Total score out of 1600)	1220	1290	1420	1290	1420
	GCE A Levels	9.5	12	15	12	15
	International Baccalaureate (IB) Diploma Programme	29	33	39	33	39
Hong Kong	Hong Kong Diploma of Secondary Education	18	21	25	21	25
India	All India Senior School Certificate	78.50%	83%	90%	83%	90%
	Indian School Certificate Examination	72.50%	77%	85%	77%	85%
Indonesia	SMA3 – 10-point scale (6 pass)	8	8.8	9.5	8.8	9.5
Malaysia	STPM	8.8	9.7	11	9.7	11
	UEC	3.8	2.6	1	2.6	1
Republic of Korea	College Scholastic Ability Test	330	350	380	350	380
	High School Diploma	79%	86%	95%	86%	95%
Vietnam	High School Diploma	8.35	8.56	9	8.56	9

1 QS World University Rankings by Subject 2025.

2 High-achieving students may qualify for the Scholars Program where higher entry requirements apply; see our website for more details.

3 90%. Source: QILT Graduate Outcomes Survey 2024.

4 2026 quoted fees, in Australian dollars and are subject to change. Fees are per 48 credit points – a standard full-time course load for a year.

5 If you have completed an Australian Year 12 or IB Diploma Programme you must satisfy the maths and/or science prerequisite level requirements specified on page 39. If you have completed another international senior secondary qualification, or higher, with maths and/or science, see page 39 for full details regarding assumed knowledge.

6 This is only applicable if you have not satisfied the English requirement; you're required to complete a Monash-approved English test such as IELTS (Academic), Internet Based TOEFL or Pearson Test of English (Academic). Other English tests may also be accepted and are assessed when you apply to Monash.

7 Only available with the Chemical engineering specialisation.

8 You'll be required to undertake off-campus placements in both metropolitan and rural locations.

9 Entry scores may differ for students who commence MUFY in 2026 and prior. See our website for full details.

For full course details visit our website, monash.edu/study

SCIENCE

Studying science at Monash gives you the opportunity to learn from leading experts who are at the forefront of teaching and research in pure and applied sciences.

You'll develop academically and personally in a dynamic and stimulating environment, with access to brilliant minds, exceptional new facilities and dedicated spaces.

WHY STUDY SCIENCE AT MONASH?

Monash has one of the most flexible science degrees in Australia, allowing you to tailor programs to your specific interest. You can study subjects across the scientific spectrum and even take units from other areas, such as arts, music and business. Additionally, you could combine your science course with another interest area, perhaps graduating with a double degree, with 11 double degree combinations offered (only applicable with the Bachelor of Science).

INDUSTRY EXPERIENCE

We provide career coaching and guidance to prepare you for the world after university.

- Build your professional experience with an internship or project. A science industry internship will give you real-world experience and count as credit towards your degree
- Our 'Career skills for scientists' unit uses work-related activities to enhance valuable skills such as commercial awareness, leadership, teamwork and communication.



FACILITIES

More than \$200 million has been invested in recent years to transform the Clayton-based Faculty of Science into one of the leading science precincts in the southern hemisphere.

- Science student learning lounge
- Earth sciences garden
- Jock Marshall Reserve
- Green Chemical Futures building
- Physics and Astronomy Collaborative-learning Environment (PACE)
- New Horizons research centre
- Maths Learning Centre
- The Hutton-Westfold Observatory.

Image: Science students at work at the Jock Marshall Reserve, Clayton campus.

[CLICK HERE FOR FULL DETAILS OF OUR UNDERGRADUATE COURSE OFFERING](#)

Bachelor of Applied Data Science

COURSE CODE: S2010 CRICOS CODE: 099359F

LOCATION **CLAYTON**
DURATION **3 YEARS**
INTAKE **FEBRUARY**
FEES² **A\$59,600**

PREREQUISITE SUBJECT LEVELS and assumed knowledge³

PREREQUISITE: English level 1
assumed knowledge: Maths level 3

For further information, refer to pages 38-39.

ENGLISH TEST LEVEL⁴
LEVEL A (refer to page 41)

Bachelor of Applied Data Science Advanced (Honours)

COURSE CODE: S3003 CRICOS CODE: 099360B

LOCATION **CLAYTON**
DURATION **4 YEARS**
INTAKE **FEBRUARY**
FEES² **A\$59,600**

PREREQUISITE SUBJECT LEVELS and assumed knowledge³

PREREQUISITE: English level 1
assumed knowledge: Maths level 3⁵

For further information, refer to pages 38-39.

ENGLISH TEST LEVEL⁴
LEVEL A (refer to page 41)

Bachelor of Science Advanced – Global Challenges (Honours)¹

COURSE CODE: S3001 CRICOS CODE: 083682D

LOCATION **CLAYTON**
DURATION **4 YEARS**
INTAKE **FEBRUARY**
FEES² **A\$62,300**

PREREQUISITE SUBJECT LEVELS and assumed knowledge³

PREREQUISITE: English level 2
assumed knowledge: One of Biology, Chemistry, Environmental Science, Geography, Physics, Psychology or Maths level 3⁵.

For further information, refer to pages 38-39.

ENGLISH TEST LEVEL⁴
LEVEL C (refer to page 41)

[ADDITIONAL REQUIREMENTS](#)

Bachelor of Science Advanced – Research (Honours)

COURSE CODE: S3002 CRICOS CODE: 083681E

LOCATION **CLAYTON**
DURATION **4 YEARS**
INTAKE **FEBRUARY, JULY**
FEES² **A\$57,700**

PREREQUISITE SUBJECT LEVELS and assumed knowledge³

PREREQUISITE: English level 2
assumed knowledge: Maths level 3⁶ and two of Biology, Chemistry, Environmental Science, Geography, Physics or Psychology.

For further information, refer to pages 38-39.

ENGLISH TEST LEVEL⁴
LEVEL C (refer to page 41)

Bachelor of Science

COURSE CODE: S2000 CRICOS CODE: 017092G

LOCATION **CLAYTON**
DURATION **3 YEARS**
INTAKE **FEBRUARY, JULY**
FEES² **A\$56,600**

PREREQUISITE SUBJECT LEVELS and assumed knowledge³

PREREQUISITE: English Level 1
assumed knowledge: One of Biology, Chemistry, Environmental Science, Geography, Physics, Psychology or Maths level 3.

For further information, refer to pages 38-39.

ENGLISH TEST LEVEL⁴
LEVEL A (refer to page 41)

DOUBLE DEGREES:

- Arts
- Biomedical Science
- Commerce
- Computer Science
- Education (Honours)⁷
- Engineering (Honours)⁷
- Global studies
- Information Technology
- Laws (Honours)
- Music
- Psychology

Below lists our majors and minors, and applies to the Bachelor of Science, Bachelor of Science Advanced – Global Challenges (Honours), and Bachelor of Science Advanced – Research (Honours)

■ MAJOR ● EXTENDED MAJOR ▲ MINOR

BIOLOGICAL AND LIFE SCIENCES

Ecology and conservation biology ■ ● ▲ Genetic and genomics ■ ● ▲ Zoology ■ ▲
Environmental Science ● Plant sciences ■ ▲

EARTH AND ENVIRONMENTAL SCIENCE

Climate and atmospheric science ■ ● ▲ Environmental science ● Geoscience ■ ● ▲
Environmental Earth science ■ ● ▲ Geographical science ■ ● ▲

BIOMEDICAL AND BEHAVIOURAL SCIENCE

Anatomy and developmental biology ■ ▲ Immunology ■ ● ▲ Pharmacology ■ ▲
Biochemistry ■ ● ▲ Microbiology ■ ● ▲ Physiology ■ ▲
Human pathology ■ Molecular biology ▲ Psychology ■ ● ▲

MATHEMATICAL AND COMPUTATION SCIENCES

Applied mathematics ■ ● Financial and insurance mathematics ● Mathematics ■ ● ▲
Computational science ■ ● ▲ Mathematical statistics ■ ● ▲ Pure mathematics ■ ●

PHYSICS AND CHEMICAL SCIENCES

Astrophysics ■ ● ▲ Chemistry ■ ● ▲ Physics ■ ● ▲

COUNTRY/REGION	INTERNATIONAL QUALIFICATION	ENTRY SCORE				
		APPLIED DATA SCIENCE	APPLIED DATA SCIENCE ADVANCED (HONOURS)	SCIENCE	SCIENCE ADVANCED – GLOBAL CHALLENGES (HONOURS)	SCIENCE ADVANCED – RESEARCH (HONOURS)
	2027 ATAR for international students	80	90	80	90	95
	UNSW Foundation Studies	7.5	8.5	7.5	8.5	9
	University of Melbourne, Trinity College Foundation Studies	77%	86%	77%	86%	90%
	MONASH PATHWAY PROGRAMS					
	Monash University Foundation Year (commencing MUFY in 2027) ⁹	72.50%	80%	72.50%	80%	85%
	Monash Advanced Preparation Program	72.50%	80%	72.50%	80%	85%
	Diploma part 2 ¹⁰	60%	70%	55%	NA	NA
Canada	Ontario Secondary School Diploma – Grade 12	81.60%	87.90%	81.60%	87.90%	91%
China	Gaokao	65%	70%	65%	70%	70%
	Advanced Placement	7	8	7	8	9
	SAT (Total score out of 1600)	1190	1290	1190	1290	1360
	GCE A Levels	9	12	9	12	14
	International Baccalaureate (IB) Diploma Programme	28	33	28	33	36
Hong Kong	Hong Kong Diploma of Secondary Education	17	21	17	21	23
India	All India Senior School Certificate	75%	83%	75%	83%	85%
	Indian School Certificate Examination	70%	77%	70%	77%	80%
Indonesia	SMA3 – 10-point scale (6 pass)	7.9	8.8	7.9	8.8	9
	STPM	8.5	9.7	8.5	9.7	10.3
Malaysia	UEC	4.2	2.6	4.2	2.6	1.8
Republic of Korea	College Scholastic Ability Test	320	350	320	350	365
	High School Diploma	77%	86%	77%	86%	90%
Vietnam	High School Diploma	8.28	8.56	8.28	8.56	8.7

- 1 There are limited places available in this course. The entry score is only indicative.
- 2 2026 quoted fees, in Australian dollars and are subject to change. Fees are per 48 credit points – a standard full-time course load for a year.
- 3 If you have completed an Australian Year 12 or IB Diploma Programme you must satisfy the maths and/or science prerequisite level requirements specified on page 39. If you have completed another international senior secondary qualification, or higher, with maths and/or science, see page 39 for full details regarding assumed knowledge. Please also note, any science-based studies used to meet the prerequisite for admission must have been completed within five years of intended commencement.
- 4 This is only applicable if you have not satisfied the English requirement; you're required to complete a Monash-approved English test such as IELTS (Academic), Internet Based TOEFL or Pearson Test of English (Academic). Other English tests may also be accepted and are assessed when you apply to Monash.
- 5 A higher level of maths is required.

- 6 If you successfully complete both Mathematical Methods and Specialist Mathematics at the required score, you must satisfy one of the remaining science subjects listed.
 - 7 Only available with select specialisations.
 - 8 The Psychology extended major is only available in the Bachelor of Science, or as part of the Science/Arts double degree.
 - 9 Entry scores may differ for students who commence MUFY in 2026 and prior. See our website for full details.
 - 10 The entry requirements published in this guide apply to specific Diploma programs only and are for students commencing their studies in 2027 where applicable credit exemptions are located on our website. For more information: monash.edu/study
- For full course details visit our website, monash.edu/study

PREREQUISITE SUBJECT LEVELS

Before starting your Monash course, it's important to make sure you've completed the right subjects to prepare for your studies. Each undergraduate course has specific prerequisite subjects that you must have studied in your previous qualification at an equivalent Australian level. Different prerequisite subject levels apply to each undergraduate course and can be located on the course-specific pages (12–37) of this guide.

For any English prerequisite, you can meet this requirement by completing an approved English subject. The table below outlines approved English subjects for common global qualifications.

ENGLISH			
■ Level 1 – English (Australian Year 12 equivalent)		■ Level 2 – Higher score in English (Australian Year 12 equivalent)	
VCE			
Units 3 and 4: A study score of at least 25 ¹ in either English (EAL) or in English other than EAL		Units 3 and 4: A study score of at least 35 in English (EAL) or 30 in English other than EAL	
IB			
Standard Level: At least 4 in one of the following: • English A: Literature • English A: Language and Literature • Literature and Performance • English AB • English B	Higher Level: At least 3 in one of the following: • English A: Literature • English A: Language and Literature • English B	Standard Level: At least 5 in one of the following: • English A: Literature • English A: Language and Literature • Literature and Performance At least 6 in one of the following: • English AB • English B	Higher Level: At least 4 in one of the following: • English A: Literature • English A: Language and Literature At least 5 in one of the following: • English B
GCE A Levels			
C grade or score of 4 in one of the following IGCSE subjects: • Literature in English • Literature (English) • English Literature • Cambridge First Language English 0522/0627/0990 • World Literature • English Language • English Language A • English Language B, <i>OR</i> B grade or score of 5 in IGCSE English as a Second Language, <i>OR</i> C grade in Cambridge IGCSE First Language English 0500 with a grade 3 or lower in Speaking and Listening, <i>OR</i> C grade or score of 4 in one of the following GCSE/GCE O Level subjects: • English Language • Literature in English • English Literature • English • English Language (Syllabus B)	C grade in one of the following GCE AS Level subjects: • General Paper • General Studies • English General Paper • English language • Language and Literature in English (previously known as Language and Literature) • Literature in English • English Literature • English Language and Literature, <i>OR</i> E grade in one of the following GCE A Level subjects: • General Studies • English General Paper • English language • Literature in English • English Language and Literature • English Literature, <i>OR</i> • GCE A Level English Rich subject ²	B grade or score of 5 in one of the following IGCSE subjects: • Literature in English • Literature (English) • English Literature • Cambridge First Language English 0522/0627/0990 • World Literature • English Language • English Language A • English Language B, <i>OR</i> A grade or score of 7 in IGCSE English as a Second Language, <i>OR</i> B grade in Cambridge IGCSE First Language English 0500 with a grade 2 or lower in Speaking and Listening, <i>OR</i> B grade or score of 5 in one of the following GCSE/GCE O Level subjects: • English Language • Literature in English • English Literature • English • English Language (Syllabus B)	B grade in one of the following GCE AS Level subjects: • General Paper • General Studies • English General Paper • English language • Language and Literature in English (previously known as Language and Literature) • Literature in English • English Literature • English Language and Literature, <i>OR</i> D grade in one of the following GCE A Level subjects: • General Studies • English General Paper • English language • Literature in English • English Language and Literature • English Literature, <i>OR</i> • GCE A Level English Rich subject ²
Advanced Placement			
AP examination score of 3 in one of the following: • AP English Language and Composition, <i>OR</i> • AP English Literature and Composition		AP examination score of 4 in one of the following: • AP English Language and Composition, <i>OR</i> • AP English Literature and Composition	
Scholastic Aptitude Test			
Refer to Advanced Placement and American High School Diploma to locate other ways on how to satisfy English prerequisite requirements ³			
Scholastic Aptitude Test Subject Tests			
Refer to Advanced Placement and American High School Diploma to locate other ways on how to satisfy English prerequisite requirements ³			
American High School Diploma (must be regionally accredited)			
Pass average in Grade 12 English or Grade 12 English Rich subject ²		100% scale (60% pass): 70% average in Grade 12 English or Grade 12 English Rich subject ² 100% scale (65% pass): 75% average in Grade 12 English or Grade 12 English Rich subject ² 100% scale (70% pass): 80% average in Grade 12 English or Grade 12 English Rich subject ²	

¹ This applies to all courses except the Bachelor of Education (Honours) and associated double degrees, the Bachelor of Occupational Therapy (Honours), and the Bachelor of Paramedicine. For these courses, a study score of at least 30 in English (EAL) or 25 in English other than EAL (or equivalent) is required where the IB Diploma Programme English entry scores are located on our website.

² The acceptance of English Rich subjects is subject to faculty approval (other guidelines also apply).

³ Monash University does not accept SAT Subject Test in Literature as meeting English prerequisite requirements.

ASSUMED KNOWLEDGE

Courses with maths and science prerequisite subjects

Some undergraduate courses require maths and/or science as prerequisite subjects. You can meet these requirements in the following ways:

- **Australian Year 12 or International Baccalaureate Diploma Programme**
You must meet the maths and/or science prerequisite subject level requirements for your chosen course as specified in the table below. The maths and/or science levels for each course are listed on the course specific pages (12–37) of this guide under 'assumed knowledge'.

- **Other qualifications recognised by Monash**

If you have completed maths and/or science subjects in the relevant discipline at the required grade level, it's assumed that you have the knowledge equivalent to the Australian Year 12 (VCE equivalent) prerequisite subject required for your chosen course. It's strongly recommended that you check that you have covered the assumed knowledge required for your course by completing the Assumed Knowledge Skills Analysis at go.monash.edu/assumed-knowledge.

This online activity includes multiple-choice questions based on your prior studies and helps you identify areas for revision, so you can start your course feeling confident and prepared. Once you accept your Monash offer and set up your student account you can complete the 'Assumed Knowledge Skills Analysis' before starting your course. These guidelines do not apply to the Bachelor of Medical Science and Doctor of Medicine.

MATHS		Science	
■ Level 1 ^{1,2} Mathematics (Australian Year 11 equivalent)	■ Level 2 ² Mathematics (Australian Year 12 equivalent)	■ Level 3 Higher level mathematics (Australian Year 12 equivalent)	■ Science (Australian Year 12 equivalent)
AUSTRALIAN YEAR 12			
VCE: Units 1 AND 2: Satisfactory completion in 2 units (any study combination) of General Mathematics or, Mathematical Methods or Specialist Mathematics, or Australian interstate equivalent.	VCE Units 3 AND 4: A study score of at least 22 in Mathematical Methods or Specialist Mathematics, or a score of at least 25 in General Mathematics, or Australian interstate equivalent.	VCE: Units 3 and 4: A study score of at least 25 in one of Mathematical Methods or Specialist Mathematics, or Australian interstate equivalent.	VCE: Units 3 and 4: A study score of at least 25 in one of Biology, Chemistry, Environmental Science, Geography, Mathematical Methods, Specialist Mathematics, Physics or Psychology, or Australian interstate equivalent, unless otherwise stated.
INTERNATIONAL BACCALAUREATE (IB) DIPLOMA PROGRAMME			
At least 3 in any mathematics subject at SL or HL level.	At least 4 in the following SL subject: • Mathematics: Application and Interpretations	At least 4 in the following SL subject: • Mathematics: Analysis and Approaches, <i>OR</i> At least 3 in the following HL subjects: • Mathematics: Applications and Interpretations, or • Mathematics: Analysis and Approaches.	At least 4 at SL or 3 at HL in Biology, Chemistry, Environmental Systems and Societies (SL only), Geography, Mathematics: Analysis and Approaches, Mathematics: Applications and Interpretations (HL only), Physics or Psychology, unless otherwise stated.

¹ Maths subjects listed in the Level 2 and Level 3 columns can also be used to satisfy Level 1 maths prerequisite requirements.

² Maths subjects listed in the Level 3 column can also be used to satisfy Level 1 and Level 2 maths prerequisite requirements.

ENTRY REQUIREMENTS

When you apply to Monash University for an undergraduate course, you must satisfy all of the following requirements:

- 1 MINIMUM AGE REQUIREMENTS:** You must be at least 17 years of age to enrol in an undergraduate course. Some exemptions may apply. Visit go.monash.edu/age-requirement.
- 2 ACADEMIC ENTRY REQUIREMENTS:** All undergraduate courses require you to have successfully completed a minimum of an Australian Year 12 qualification (or equivalent) and achieve the required academic entry score. Pages 12–37 of this guide outline the academic entry scores for the listed qualifications that are required for each undergraduate course that apply to international students only. Full details on 'How to calculate your entry score' for each qualification can be located on our website. If your qualification is not listed in this guide refer to go.monash.edu/find-a-course.
- 3 ENGLISH ENTRY REQUIREMENTS:** All undergraduate courses require you to satisfy English entry requirements where different entry levels apply. The measure of English must be completed within three years prior to the Monash course commencement date (other guidelines may apply).
English entry requirements can be met in one of the following ways:
 - English subject (Australian Year 12 equivalent):** You can meet English entry requirements if you've completed an English subject that is equivalent to an Australian Year 12 level, and meet the required score. Approved English subjects for common qualifications are outlined in the prerequisite table on pages 38–39.
 - Language of instruction:** You can meet English entry requirements if you've completed half a year of full-time study (equivalent to 24 Monash credit points) at Australian VET Diploma (AQF level 5) or higher (or equivalent) at an institution where English is the language of instruction, communication and assessment for all aspects of study for the whole of the educational institution.
- 4 ENGLISH TESTS:** Monash accepts the following English tests as satisfying English entry requirements:
 - IELTS (Academic): www.ielts.org
 - TOEFL (internet based): www.ets.org
 - Pearson Test of English (Academic): www.pearsonpte.com
 - C1 Advanced and C2 Proficiency: www.cambridgeenglish.org
 - Other English tests are accepted and are located on our website. Not all Monash-approved English tests are accepted for courses with additional registration requirements.

- 4 PREREQUISITE SUBJECTS AND ADDITIONAL REQUIREMENTS**
In addition to meeting English entry requirements, some undergraduate courses may require you to satisfy other prerequisite subjects and additional selection and/or special requirements. Full details for these can be found on our website.

Please note that all entry requirements for Monash University are subject to change.



Image: Study area in the Learning and Teaching Building, Clayton campus.

MONASH UNIVERSITY ENGLISH TEST LEVELS

Each Monash course has an assigned English test level that applies to Monash-approved English tests where the entry scores for each level are as follows:

	Monash pathway program levels			Monash University undergraduate levels					
English test ¹	MP – Level A ²	MP – Level B ²	MP – Level C	Level A	Level B	Level C	Level D	Level E	Level F ³
IELTS (Academic)									
Overall Band Score	5	5.5	6	6.5	6.5	7	7	7	7
Listening	4.5	5	5.5	6	6.5	6.5	7	7.5	7
Reading	4.5	5	5.5	6	6.5	6.5	7	7	7
Writing	4.5	5	5.5	6	6	6.5	7	7	6.5
Speaking	4.5	5	5.5	6	6	6.5	7	7.5	7
TOEFL (Internet Based)⁴									
Total Score	For entry scores that apply to Monash Pathway Programs, see our website.								
Listening									
Reading									
Writing									
Speaking									
Pearson Test of English (Academic)									
Overall Score	36	42	50	58	58	65	65	65	66
Listening	30	36	42	50	58	58	65	73	66
Reading	30	36	42	50	58	58	65	65	66
Writing	30	36	42	50	50	58	65	65	58
Speaking	30	36	42	50	50	58	65	73	66
– C1 Advanced – C2 Proficiency									
Overall Score	154	162	169	176	176	185	185	185	185
Listening	147	154	162	169	176	176	185	191	185
Reading	147	154	162	169	176	176	185	185	185
Writing	147	154	162	169	169	176	185	185	176
Speaking	147	154	162	169	169	176	185	191	185

Other English tests are accepted and are located on our website at monash.edu/study

¹ The English test level for each Monash course is specified in the course tables in this guide.
² Monash University undergraduate English test Level A entry scores apply to the Monash University Foundation Year packaged with the Bachelor of Nursing, Bachelor of Nursing (Scholars Program), and Bachelor of Nursing and Bachelor of Midwifery (Honours).
³ Not all Monash-approved English tests are accepted for courses assigned at Level F with additional registration requirements. For further details, visit monash.edu/study.
⁴ Applicable to TOEFL (Internet Based) tests taken on 21 January 2026 onwards. For entry scores applicable to TOEFL (Internet Based) tests taken before 21 January 2026, please see our website.

MONASH PATHWAY PROGRAMS

ENTRY REQUIREMENTS

COURSE	Course code	Duration (months) ¹	Location	Intake (sem/tri) ²	English test level (see page 41)	2026 fee p.a. ³ (A\$)	Prerequisites		Assumed knowledge (see pages 38-39)			2027 ATAR for international students	GCE A Level	All India Senior School Certificate Examination XII	Indian School Certificate Examination XII	Advanced Placement, America	SAT, America (Total score out of 1600)	High School Diploma, Vietnam	Hong Kong Diploma of Secondary Education and (Senior Secondary 3)	International Baccalaureate (IB) Diploma	Ontario Secondary School Diploma – Grade 12	SNMA3, Indonesia – 10-point scale (6 pass)	STPM, Malaysia	UEC, Malaysia	Monash University Foundation Year (commencing MUFY in 2027)	UNSW Foundation Studies	University of Melbourne, Trinity College Foundation Studies							
							English		Mathematics																			Science						
							AUS Yr 11 (equivalent)	AUS Yr 12 (equivalent) ⁴	Level 1	Level 2	Level 3																	Specified ⁵						
Monash University Foundation Year (Monash College)	3611	Standard: 12	D	Feb, Aug	MP – B ⁶	\$38,400	■		Not applicable			Monash University Foundation Year (MUFY) prepares you for your first year of any Monash University undergraduate degree ¹² . MUFY is offered at Standard and Extended levels with different durations, intake dates and entry requirements. To view MUFY entry requirements refer to go.monash.edu/mc-foundation-year																						
	3633	Extended: 18		Feb, Aug	MP – A ⁶	\$51,900			Not applicable																									
Monash Advanced Preparation Program	U0401	4	D	Feb, Sept	MP – C	\$27,000		■	Not applicable			55	4	55%	47%	6	1060	6.4	11	22	65%	6	6	7.5	52.5%	5.25	52.5%							
Diploma of Art and Design																																		
Part 1	U0602	9	D	Feb, Jun, Oct ⁷	MP – B	\$35,400	■		Not applicable			Successful completion of a Diploma of Art and Design Part 1 will lead you to a Diploma of Art and Design Part 2. Diploma of Art and Design Part 2 prepares you for articulation into selected Art, Design and Architecture undergraduate destination degrees ¹² . To view the Diploma of Art and Design entry requirements, refer to monash.edu/study																						
Part 2		9		Feb, Jun, Oct ⁷	MP – C	\$38,800		■	Not applicable			60	5	55%	50%	6	1090	6.5	12	24	70%	6	6.6	7.5	55%	5.5	55%							
Diploma of Arts																																		
Part 1 (streams below)																																		
– Media Communication	U0601	9	D	Feb, Jun, Oct	MP – B	\$35,900	■		Not applicable			Successful completion of a Diploma of Arts Part 1 will lead you to a Diploma of Arts – Sociology/Media Communication/Psychology streams Part 2. Diploma of Arts – Sociology/Media Communication/Psychology streams Part 2 prepares you for second-year entry into selected Arts undergraduate destination degrees ¹² . To view the Diploma of Arts entry requirements, refer to monash.edu/study																						
– Sociology																																		
– Psychology																																		
– Sociology Education																																		
– Psychology Education																																		
Part 2 (streams below)																																		
– Media Communication	U0601	9	D	Feb, Jun, Oct	MP – C	\$40,000	■		Not applicable			60	5	55%	50%	6	1090	6.5	12	24	70%	6	6.6	7.5	55%	5.5	55%							
– Sociology																																		
– Psychology																																		
– Sociology Education																																		
– Psychology Education																																		
Diploma of Business																																		
Part 1	U0603	9	D	Feb, June, Oct	MP – B	\$41,700	■		Not applicable			Successful completion of a Diploma of Business Part 1 will lead you to a Diploma of Business – Business/Commerce streams Part 2. Diploma of Business – Business/Commerce streams Part 2 prepares you for second-year entry into selected Business and Economics undergraduate destination degrees ¹² . To view the Diploma of Business entry requirements, refer to monash.edu/study																						
Part 2 (streams below)																																		
– Business	U0603	9	D	Feb, Jun, Oct	MP – C	\$46,000	■																											
– Commerce																																		
– Business Education																																		
Diploma of Engineering																																		
Part 1	U0604	9	D	Feb, Jun, Oct	MP – B	\$39,100	■		Not applicable			Successful completion of a Diploma of Engineering Part 1 will lead you to a Diploma of Engineering – Engineering stream Part 2. Diploma of Engineering – Engineering stream Part 2 prepares you for second-year entry into selected Engineering undergraduate destination degrees ¹² . To view the Diploma of Engineering – Engineering stream entry requirements, refer to monash.edu/study																						
Part 2		12			Feb, Jun, Oct	MP – C	\$44,500		■																									
Diploma of Information Technology																																		
Part 1	U0605	9	D	Feb, Jun, Oct	MP – B	\$38,500	■		Not applicable			Successful completion of a Diploma of Information Technology Part 1 will lead you to a Diploma of Information Technology Part 2. Diploma of Information Technology Part 2 prepares you for second-year entry into selected Information Technology undergraduate destination degrees ¹² . To view the Diploma of Information Technology entry requirements, refer to monash.edu/study																						
Part 2					MP – C	\$44,000		■																										
Diploma of Science																																		
Part 1	U0606	9	D	Feb, Jun, Oct	MP – B	\$37,800	■		Not applicable			Successful completion of a Diploma of Science Part 1 will lead you to a Diploma of Science Part 2. Diploma of Science Part 2 prepares you for second-year entry into selected Science undergraduate destination degrees ¹² . To view the Diploma of Science entry requirements, refer to monash.edu/study																						
Part 2 (streams below)																																		
– Science	U0606	9	D	Feb, Jun, Oct	MP – C	\$43,300	■		Not applicable			ONE from Science approved list (Australian Year 12 equivalent) ^{10,11}																						
– Science Education					MP – C																													

D – Docklands

1 Duration is based on a standard full-time load of 24 credit points per trimester.
 2 Semester 1 commences in February and Semester 2 commences in August. Please note that diplomas operate on a Trimester basis. Trimester 1=February, Trimester 2=June, Trimester 3=October.
 3 These are the confirmed 2026 tuition fees; indicative only for 2027. Fees are quoted in Australian dollars, and is the annual average fee per 48 credit points of study in this course. Fees are adjusted annually. For Foundation year fees, please see monashcollege.edu.au/courses/fy/dates-fees. For Diploma fees, please see monash.edu/study

4 VCE Units 3&4: a score of 23 in any English (or equivalent).
 5 Science approved list: **VCE:** Biology, Chemistry, Environmental Science, Geography, Mathematical Methods, Specialist Mathematics, Physics or Psychology. **IB (SL or HL):** Biology, Chemistry, Environmental Systems and Societies (SL only), Geography, Mathematics, General Mathematics (HL only), Mathematics: Analysis and Approaches, Mathematics: Applications and Interpretations (HL only), Physics or Psychology.

6 Monash University undergraduate English test Level A entry scores apply to the Monash University Foundation Year packaged with the Bachelor of Nursing, Bachelor of Nursing (Scholars Program), and Bachelor of Nursing and Bachelor of Midwifery (Honours).
 7 The architectural design stream is only available in the following intakes: Part 1, June and October; Part 2, February and June.
 8 The maths prerequisite applies to these streams only if you plan to enrol in the Bachelor of Politics, Philosophy and Economics or one of its associated double degrees.

9 A pass average in Mathematics (Australian Year 11 equivalent) is also accepted where you will be required to enrol in specific units during your diploma studies – see our website for full details.
 10 You must also enrol in specific units during your diploma studies – see our website for full details.
 11 If you plan to enrol in the Bachelor of Science (or one of its associated double degrees) intending to major in mathematics, Level 3 Maths applies. See page 39 for more information.
 12 Entry requirements into Monash University apply. Please refer to monash.edu/study

APPLICATION PROCESS FOR INTERNATIONAL STUDENTS

BEFORE YOU APPLY

Use monash.edu/study to check:

- minimum age requirements
- academic entry requirements that apply to international students
- English entry requirements
- prerequisite subject requirements
- assumed knowledge and complete online activities to strengthen knowledge (if applicable)
- additional requirements (if applicable)
- special requirements (see course handbook handbook.monash.edu)
- application deadlines
- start dates
- fees.

APPLICATION PROCESS

1 **Apply:** Apply for your preferred course at go.monash.edu/apply-online. You'll also need to provide additional documents to support your application that may require certification and/or translation. Visit go.monash.edu/certifying-documents.

2 **Your application is assessed:** We determine whether you've met the University entry requirements, and if successful you'll receive an offer known as an International Student Course Agreement (ISCA). Monash also checks whether you're a genuine student seeking entry to Australia to study. Visit go.monash.edu/genuine-student-requirement.

3 **Accept your offer:** Follow the instructions in your ISCA. You must complete, sign and return all pages in Part A of your ISCA, along with payment and provide a copy of the personal details page of your passport to Admissions *BEFORE* the offer lapse date. If you are under 18, you also need to complete and return the **Under 18 Welfare and Accommodation Form**. For more information visit: go.monash.edu/Under-18-form

4 **Receive a Confirmation of Enrolment (CoE) and enrol online:** Once your acceptance has been processed, you'll receive an electronic CoE and an invitation to set up your Monash account to enrol in your course online. If you are under 18, once your welfare and accommodation arrangements are made, you'll also receive the Confirmation of Appropriate Accommodation and Welfare (CAAW). You'll need to plan your course and enrol early so that you can get the best possible start.

5 **Arrange your student visa:** You'll need the CoE (and CAAW if you are under 18) to apply for your student visa with the Department of Home Affairs (DHA) for study in Australia¹. When applying for your student visa, you'll need to meet all core visa criteria, such as the genuine student requirement, good character and health criteria. Financial capacity documentation may also be required. You'll also need to satisfy English requirements set by DHA where these requirements may differ from Monash.

If you're under 18 years of age when you start your course, you need to have your caregiver and accommodation arrangements approved before applying for your student visa. Visit go.monash.edu/under-18-support.

For more information visit: go.monash.edu/int-student-visa.

6 **Planning your arrival:** Participate in the pre-arrival briefing, book your airport reception, research your accommodation options, and attend Orientation week. Use a checklist to ensure you've completed essential tasks before you start your course at Monash.

WHEN SHOULD YOU APPLY?

Apply as early as possible as some courses may close a few months or a year before the course start date. This allows time for your application to be processed and can help to secure a place if your preferred course has limited places. Applying early also gives you time to get your student visa, which can take up to six months for some nationalities and countries.

WHEN TO APPLY THROUGH VTAC

International students who are undertaking an Australian Year 12 qualification in Australia or overseas, IB Diploma Programme in Australia or New Zealand, or National Certificate of Educational Achievement (NCEA) Level 3 in New Zealand, must apply through the Victorian Tertiary Admissions Centre (VTAC), visit www.vtac.edu.au.

APPLY FOR CREDIT

To apply for credit visit: go.monash.edu/apply-credit.

DEFER YOUR STUDIES

Monash generally allows deferment of study up to a maximum of 12 months, or longer in exceptional circumstances. If you decide to delay your course commencement, send your deferral request to mu.documents@monash.edu or through your Monash education agent, if applicable.


Other guidelines apply, visit: go.monash.edu/defer-study


NEED HELP WITH YOUR APPLICATION?


If you're applying through a Monash education agent, contact them for assistance. Some Monash education agents may charge a fee for additional services. Please be aware of agents who claim to represent Monash when they don't; for more details and a list of authorised Monash education agents, visit: go.monash.edu/apply-through-agent.

Contact us:

 go.monash.edu/international-enquiries

 +61 39903 4788

 Chat with Monash

 **CLICK HERE**
for more information on our application process

FEES

To study at Monash University, you'll need to pay tuition fees to the University. As an international student, you'll be charged full fees. Tuition fees vary depending on the course and the year of commencement. All tuition fees and course durations specified in this guide are in Australian dollars and only apply to courses studied at Australian campuses. The tuition fees quoted are for 48 credit points and are applicable to courses commencing in 2026. Tuition fees for courses commencing in 2027 will be different. Monash University reserves the right to adjust the annual tuition fees in future years of your course. Any adjustment will be applied on the first day of January each year for teaching periods with a census date thereafter.

go.monash.edu/fee-information

OVERSEAS STUDENT HEALTH COVER

It's a condition of the Student Visa (subclass 500) that you must hold Overseas Student Health Cover (OSHC) for the duration of your stay in Australia, beginning on the day of your arrival. Monash University requires all commencing international students to purchase OSHC for the duration of their visa. If you're accompanied by immediate family to Australia as dependants on your student visa, you'll also need to purchase the visa-length OSHC for them. Your Confirmation of Enrolment (CoE), for student visa purposes, will only be issued:

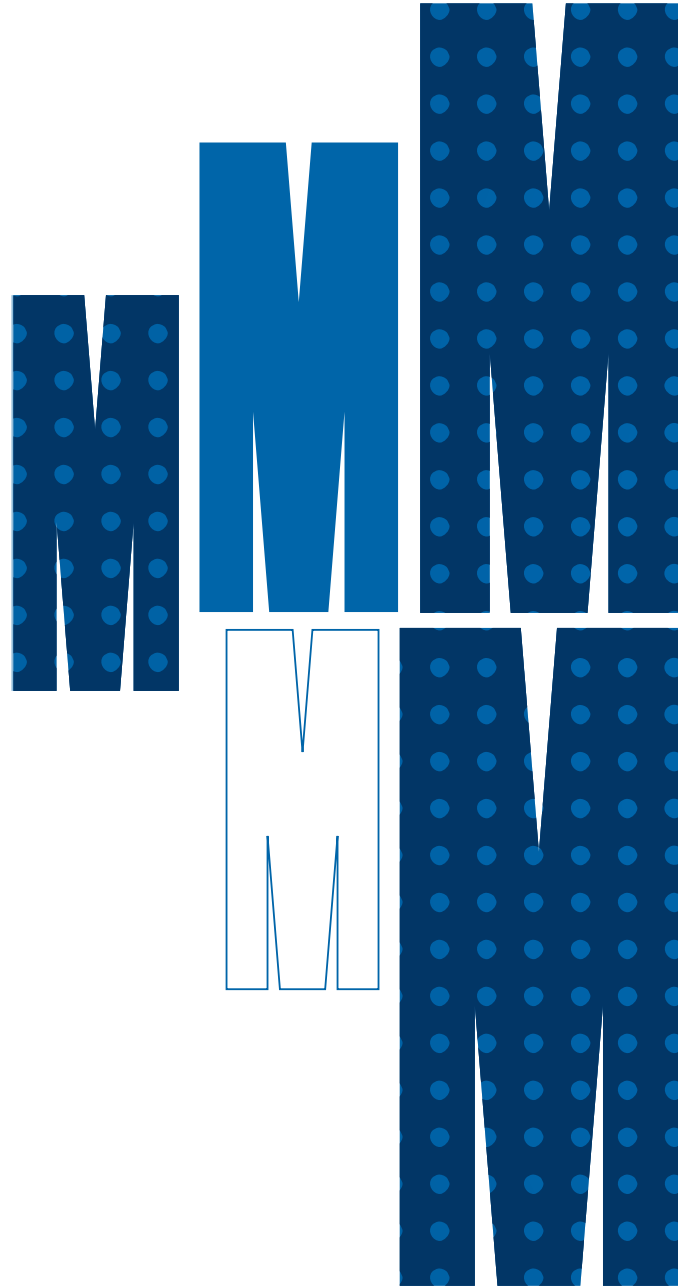
- once you've accepted your course offer along with payment for OSHC; or
- once you've provided proof of having a valid visa-length OSHC; or
- once you've submitted approved documentation for exemption from payment of OSHC.

go.monash.edu/overseas-student-health-cover

¹ You're advised not to commence the visa application process until you've been issued with your CoE. Your student visa application may take up to six months or more, depending on your nationality and country of residence.



CLICK HERE
to explore our digital course guide



MONASH UNIVERSITY

monash.edu

FIND A COURSE

monash.edu/study

FUTURE STUDENT ENQUIRIES

**Australian citizens, permanent
residents and New Zealand citizens**

monash.edu/study/contact-us

International students

T Australia freecall: 1800 MONASH (666 274)

T +61 3 9903 4788 (outside Australia)

E study@monash.edu

