

INTERNATIONAL GRADUATE

COURSE GUIDE 2027



MONASH: IMPACT IN MOTION

OUR COMMUNITY

When you join Monash, you become part of a global community committed to improving the world. With our main base in Australia, campuses in Malaysia, Indonesia, China, India and Italy, and joint partnerships with leading international teaching institutions, our global network is connected by our shared values and a commitment to the communities we serve.

While each Monash campus has its own personality, all are friendly, inclusive and welcoming communities where you'll feel at home.

BUILD MOMENTUM WITH MONASH

As a university with a global footprint, we know we must play our part in solving the world's problems. We've harnessed our knowledge, capability, creativity and scale to make real change, every second of every day.

Consistently ranked as one of the world's top universities, our unprecedented global reach generates research and education that impacts and changes both lives and communities at scale.

We have the momentum to create the future we need for generations to come. There's no time to wait.

Whether you want to change your life, your career, your community or the future, your journey starts at Monash.

 [CLICK HERE](#) to learn more



100+
PARTNER
UNIVERSITIES
AROUND THE GLOBE

8
CAMPUSES ACROSS
4 COUNTRIES

2
CAMPUS
PARTNERSHIPS

INDIA
Mumbai

CHINA
Suzhou

MELBOURNE
Clayton
Caulfield
Parkville
Peninsula
Alfred

ITALY
Prato

MALAYSIA
Kuala Lumpur

INDONESIA
Jakarta

UNIVERSITY-WIDE RANKINGS

#36 IN THE WORLD
QS World University Rankings 2026

#37 IN THE WORLD
QS Sustainability Rankings 2026

#38 IN THE WORLD
US News and World Report Best Global University Rankings, 2025-2026

#58 IN THE WORLD
Times Higher Education (THE) World University Rankings, 2026

#63 IN THE WORLD
Times Higher Education (THE) World Reputation Rankings 2026

#76 IN THE WORLD
ShanghaiRanking Academic Ranking of World Universities 2026

ACKNOWLEDGEMENT OF COUNTRY

Monash University recognises that its Australian campuses are located on the unceded lands of the people of the Kulin Nations, and pays its respects to their Elders, past and present.

RESEARCH WITH MONASH

Our mission-oriented approach connects researchers across disciplines with governments, industries and communities to meet the challenges of the age and create a better future.

Today, our ambition and optimism are stronger than ever. We have a clear vision of what we want our research to achieve and how we'll help our researchers make it happen.


Here's just some of the research we're part of at Monash.

- **Securing Antarctica's Environmental Future:** Monash is on a mission to protect the future of Antarctica and the planet through understanding the impacts of climate change.
- **MAVERIC super computer:** The first deployment of its kind in Australia – MAVERIC will deliver unprecedented AI capability for research in areas from cancer detection to climate action.

- **Cardiovascular disease:** Monash is finding new ways to prevent and treat cardiovascular disease, including leading the Artificial Heart Frontiers Program, and creating a world-leading network of cardiovascular experts.
- **World Mosquito Program (WMP):** In the face of a rising global threat from mosquito-borne diseases, the WMP, a not-for-profit initiative owned by Monash, is stepping up its efforts to protect communities worldwide.

- **Advanced MRI screening:** Launched by Monash University in December 2025, this advanced, research-dedicated MRI scanner will support our world-leading researchers as they accelerate breakthroughs in critical health challenges such as dementia, schizophrenia, addiction, epilepsy and cancer.
- **Ending modern slavery:** Monash has developed strategic research partnerships and programs to build evidence and generate practical solutions to work towards a future free of exploitation.

- **Revitalising Informal Settlements and their Environments (RISE):** This program is working with communities, governments, researchers and industry partners to co-design water and sanitation solutions in 24 informal settlements in Fiji and Indonesia.

 [CLICK HERE](#)
to learn more about
Monash Research

WAYS INTO MONASH



Image: Students studying at Caulfield Library, Caulfield campus.

SCHOLARSHIPS


Monash University is committed to attracting academic high achievers and producing internationally-competitive graduates.

MONASH SCHOLARSHIPS

These are just some of the scholarships¹ available to international graduate students:

- Monash International Tuition Scholarship – for international graduate research students
- Monash Graduate Scholarship – available to students undertaking research master’s and doctorates.

There are many faculty and donor scholarships also available to international students. Scholarships are also available through external organisations to Monash such as the Australian government, sponsors and numerous countries worldwide.

 [CLICK HERE](#)
for more information on our Scholarship offering

STUDY GRANTS

Through our Study Grants program, we’ll help you reach your full potential and achieve your career goals and aspirations.

As an international student applying to study a graduate course at Monash University in Australia, you’ll automatically be assessed for a Monash University International Study Grant offer.

- Eligibility and maintenance criteria apply. Please visit the website for the most up-to-date details about the program.
- Please note that Monash University International Study Grants are limited, so we encourage you to apply early.

go.monash.edu/study-grant

ENGLISH LANGUAGE COURSES

To succeed at Monash, you’ll need excellent English language skills. We offer tailored English language programs designed to meet the specific requirements of the Monash course you’re aiming to enter. When you apply, we’ll assess your current skills and place you in the best program for your level and destination course.

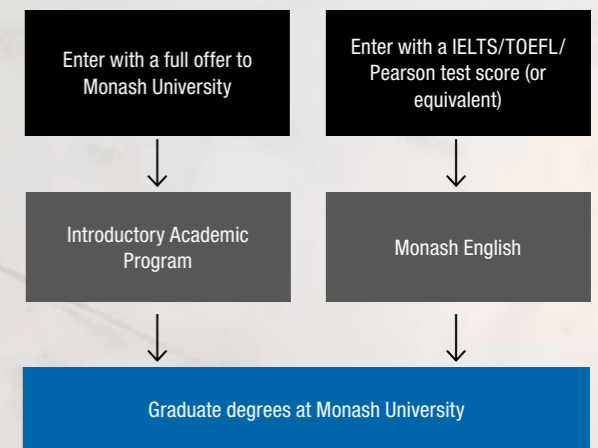
MONASH ENGLISH (ME)

This course will develop the English language and academic skills required for pursuing a Foundation Year, Diploma, Monash Advanced Preparation Program, undergraduate, graduate and higher degrees of research courses at Monash – without the need to sit for an IELTS test. There are multiple entry and exit points, allowing you to align yourself with our destination programs and their enrolment and intake dates.

INTRODUCTORY ACADEMIC PROGRAM (IAP)

This course introduces you to the self-directed study style you’ll need at Monash University. Classes focus on developing your academic reading and writing skills, critical thinking and research literacy, giving you the best start at university. You can study IAP if you have met the academic and English language entry requirements for Monash University.

Choose your English language pathway



go.monash.edu/english-course

¹ Scholarships will have their own criteria – visit our website for full details.

CONNECT AND GROW WITH MONASH



From day one, a Monash education sets you on your journey to future career success.


 **CLICK HERE**
to learn more about this
flagship program

Image: Graduating student, Clayton campus.

ACADEMIC DEVELOPMENT

Student Academic Success

Monash's Student Academic Success (SAS) is a program with a supportive specialist team of advisers. Our learning and language advisers are there to help you get on track with learning, stay on track and boost your results. With SAS you'll be able to access:

- Individual consultations with learning and language advisers to gain support
- Workshops to learn a range of learning and language skills with other students
- Self-help resources such as quick study guides, learning and teaching technology guides and other bespoke resources that will support your orientation and academic progress.

go.monash.edu/student-success

CAREER IMPACT

As a Monash student, you'll have access to real-world experiences, tailored support and global opportunities that help you purposefully grow your professional toolkit – all integrated into your study journey. You'll develop an enterprising mindset, hone your employability skills, and gain a competitive edge in the graduate employment market.

- **Industry experiences:** Get career-ready in real-world environments through internships, industry placements and collaborative projects supported by industry mentors and career experts.
- **Personalised career support:** Whether you're looking for advice on where to start, polishing your résumé, mastering job applications, prepping for interviews or exploring your career options, our friendly team in the Careers and Internships Studio are there to help. You'll also have access to our new platform, CareerEdge, which will provide personalised career skill-building simulations that are tailored to your skills and the roles that you're looking for.

- **Signature Industry Event series:** Connect directly with industry and alumni, gain confidence, expand your networks, sharpen your skills, and unlock new career possibilities.
- **Develop leadership:** Develop skills for effective leadership by getting involved with our many leadership programs.
- **Build an enterprising mindset:** The Generator is Monash University's hub for entrepreneurial skills and will help you sharpen these skills to immerse yourself in the world of innovation and start-ups through tailored programming, events and resources.

go.monash.edu/student-careers

OUR ALUMNI NETWORK

Graduation isn't the end of your journey with Monash. You'll be a lifelong member of a powerful community of 530,000 global alumni in more than 170 countries.

Wherever you are in your personal or professional journey, the alumni community is here to support you.

Benefits of the Monash alumni community:

- Access free professional and personal development online learning sessions with industry experts
- Participate in exclusive webinars and events tailored for lifelong learning
- Connect with and learn from fellow alumni through our mentoring program
- Stay connected with fellow graduates from your course, special-interest group or region through exclusive networking forums
- Enjoy free library access
- Join our international alumni book club
- Stay engaged with global alumni.

go.monash.edu/alumni

MONASH INNOVATION GUARANTEE

The postgraduate Monash Innovation Guarantee (MIG) is your chance to collaborate with 50+ industry leaders from organisations including the United Nations, Microsoft, Amnesty International, GHD, biotech startups and more, and implement change within the organisation.

This intensive winter unit embeds industry experience, innovation and entrepreneurship skills into your course to increase your employability and your impact:

- Guaranteed industry collaboration – no applications or interviews
- Work in cross-functional, interdisciplinary teams
- Solve real issues that industry partners are facing
- Develop a career plan
- Develop skills in pitching and speakership, adaptive leadership, ideation and testing, negotiation and stakeholder engagement.

LIVING IN MELBOURNE

Our Australian base is a vibrant, multicultural city that brims with life. It offers an abundance of cultural festivities, international sporting events, cafés and restaurants serving global cuisines, features beautiful parks and beaches, and thrives with an eclectic mix of music and arts. You couldn't pick a better place to live.

As one of the top 10 most liveable cities¹, you can expect excellence in public transport and healthcare, as well as opportunities for casual work while studying. Plus, Melbourne is renowned as a welcoming environment for international students, providing a home away from home.

¹ Global Liveability Index 2024, Economist Intelligence Unit, 2024.



Image: View of Melbourne city.



Image: Typical café in Melbourne.



Image: Brighton beach boxes, Victoria.



Image: Aussie Rules football game.

LIFE AT MONASH



Image: Caulfield campus.



Image: Transport interchange, Clayton campus.



Image: Monash Sport.

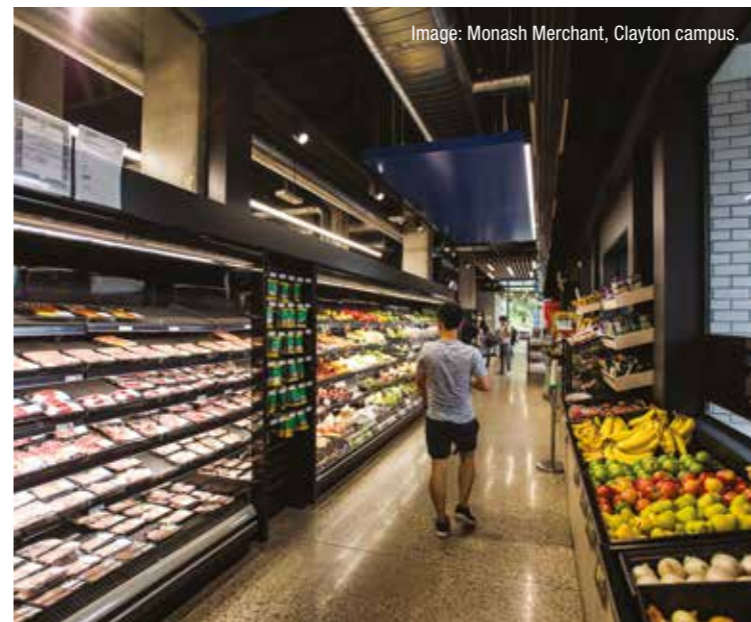


Image: Monash Merchant, Clayton campus.

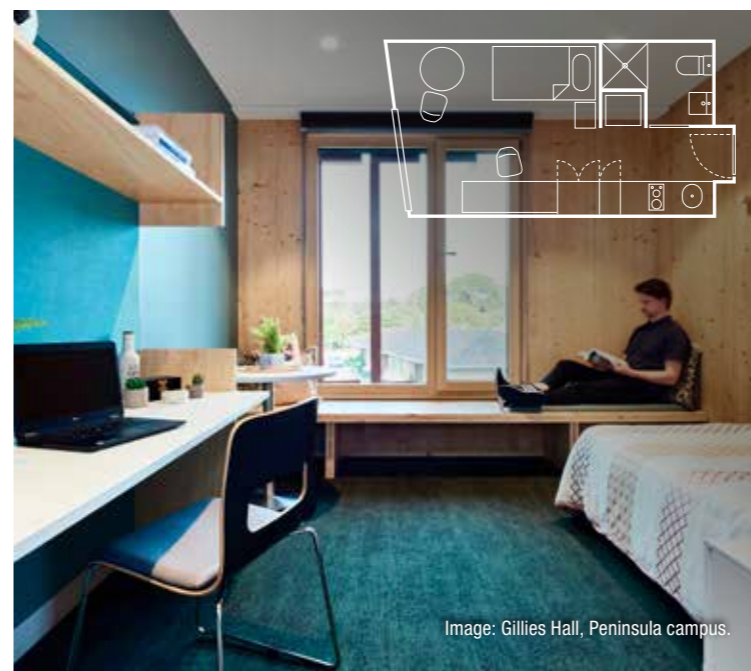


Image: Gillies Hall, Peninsula campus.

We want you to get the most out of your university life and that goes beyond what course you enrol in.

Start with a short stroll to class before lunch, or chat with your friends at one of the cafés. Study on the lawns in the afternoon. Connect with fellow travellers in our clubs and societies. Gyms, tennis courts, sports fields and restaurants – they're all available to you as you build your student life at Monash.

Student connections

A huge part of your student life will be in the connections you make. We offer myriad ways to connect with other students. There are hundreds of clubs and associations, and we run events and activities throughout the year that will allow you to connect with other people and cultures.

Health and security services

Staying physically and mentally healthy can benefit your studies. We offer medical, dental, counselling and pharmacy services on our campuses. We also offer disability and support services. Our security services are staffed 24 hours, so you can be sure to have assistance available to you if you're staying back late to study.

go.monash.edu/student-help

ACCOMMODATION AT MONASH

Where you'll live is one of the more important decisions you'll make at university, and when it comes to choosing a place to live, everyone has different preferences in terms of location and accommodation type.

That's why we're here to help you navigate your accommodation options.

On-campus accommodation

Living on campus offers convenience, fun, and security. Join our inclusive residential community to enjoy weekly events, make friends, and receive support from our dedicated residential life teams and 24/7 security assistance. On-campus accommodation is available at the Clayton and Peninsula campuses in a range of different styles, including from shared flats, halls of residence and self-contained studio apartments¹.

We offer graduate areas within accommodation facilities, designed to suit the lifestyle and study needs of postgraduate students.

These areas provide a quieter environment and a supportive community of like-minded residents who are also undertaking further studies. Graduate areas often include exclusive shared spaces to study, collaborate and connect with other graduate students.

Graduate and mature-age students are allocated these areas to ensure an environment conducive to focused study and peer connection.

[Scan below](#) to view pricing and inclusions¹.

Applications for on-campus accommodation are free and open at the start of September. Applications are assessed on the date of application so it's important to apply as early as possible.

Other student accommodation providers

Monash University works with several student accommodation providers who offer a range of options specifically for students and often with residential support.

Renting in the private rental market

If you'd prefer to rent a house, or a room in a shared house or rooming house, we can help guide you on how to find accommodation to suit your needs.

[CLICK HERE](#)
for information on Monash
Residential Services

¹ The fees for living on campus at Monash University vary depending on the type of accommodation. On-campus accommodation fees include gas, water, electricity, internet, and residential parking permit.

ART, DESIGN AND ARCHITECTURE

At Monash Art, Design and Architecture, you'll thrive in a creative environment that empowers you to take risks and push boundaries.



Image: Monash Architecture students, Faculty of Art, Design and Architecture, Caulfield campus.

Our vibrant community of students, academics, researchers and staff fosters creative excellence at the highest level. Our Art, Design and Architecture facilities and technical workshops give you access to state-of-the-art technology that blend traditional methods of production with emerging and new technologies. You'll take your ideas from concept to prototype using a range of techniques, materials and equipment. You'll learn how to challenge the status quo, engage on a global level and graduate with the skills and confidence to make positive change in the world around you.

PROFESSIONALLY ACCREDITED COURSES

All our courses are professionally accredited and recognised.

Architecture: Accredited by the Architects Accreditation Council of Australia (also recognised by the Board of Architecture in Malaysia and Singapore).

Design: Recognised by the Design Institute of Australia.

Urban Planning and Design: Accredited by the Planning Institute of Australia.

RESEARCH LABS

At Monash Art, Design and Architecture, you'll have the opportunity to study with a wide range of academics who are leading innovative, collaborative research on today's most pressing issues. You'll also engage in meaningful research that explores and addresses:

- the reimagining of cities and urban planning
- the challenges of vulnerable communities and settlements
- health and human experience
- society, culture and future technologies
- industrialised building practices
- Indigenous ways of knowing and creative practice.

We offer world-class studios and facilities, from digital fabrication to 3D printing and robotic manufacturing.

[CLICK HERE](#)
for full details of our
graduate course offering

Master of Architecture

COURSE CODE: F6001 CRICOS CODE: 097034K

LOCATION **CAULFIELD**

INTAKE **FEBRUARY, JULY⁶**

FEES¹ **A\$50,900**

ENGLISH TEST LEVEL² **A**

PROFESSIONALLY ACCREDITED

ADDITIONAL REQUIREMENTS

ENTRY REQUIREMENTS³

Bachelor's degree (or equivalent) in any field
Bachelor's degree in architecture (or equivalent)

AVERAGE SCORE⁴

High Credit (65%)
High Credit (65%)

DURATION⁵

3
2

Master of Design

COURSE CODE: F6002 CRICOS CODE: 089737A

LOCATION **CAULFIELD**

INTAKE **FEBRUARY, JULY**

FEES¹ **A\$46,700**

ENGLISH TEST LEVEL² **A**

ADDITIONAL REQUIREMENTS

ENTRY REQUIREMENTS³

Bachelor's degree (or equivalent) in any field
Bachelor's degree (or equivalent) in a related field, OR
Bachelor's degree (or equivalent) in any field +
graduate certificate (or equivalent) in a related field
Bachelor's (hons) degree (or equivalent) in a related field, OR
Bachelor's degree (or equivalent) in a related field +
graduate certificate (or equivalent) in a related field

AVERAGE SCORE⁴

Credit (60%)
Credit (60%)
Credit (60%)
Credit (60%)

DURATION⁵

2
1.5
1

SPECIALISATIONS

- Design research
- Interaction design
- Multimedia design

Master of Urban Planning and Design

COURSE CODE: F6004 CRICOS CODE: 093076K

LOCATION **CAULFIELD**

INTAKE **FEBRUARY**

FEES¹ **A\$49,800**

ENGLISH TEST LEVEL² **A**

PROFESSIONALLY ACCREDITED

ADDITIONAL REQUIREMENTS

ENTRY REQUIREMENTS³

Bachelor's degree (or equivalent) in any field

AVERAGE SCORE⁴

High Credit (65%)

DURATION⁵

2

¹ 2026 quoted fees, in Australian dollars and are subject to change. Fees are per 48 credit points – a standard full-time course load for a year.

² This is only applicable if you have not satisfied the English language requirement; you're required to complete a Monash-approved English test such as IELTS (Academic), Internet Based TOEFL or Pearson Test of English (Academic). Other English tests may also be accepted and are assessed when you apply to Monash.

³ The entry requirements in this table only provide the basic course entry requirements. Your prior qualification/s must be accredited to the equivalent Australian level specified in the entry requirements table. Full details are available on our website.

⁴ In equivalent Monash University grading scale terms, a 100% scale where 50% is a pass.

⁵ Duration is expressed in years, and reflects full-time study mode. Even if you're eligible for a shorter course duration, you may elect to complete the longer duration.

⁶ The July intake is only available for the two-year program.

For full course details visit our website, monash.edu/study

ARTS, HUMANITIES, SOCIAL SCIENCES AND PERFORMING ARTS

RANKED
NO.1 IN
AUSTRALIA¹
COMMUNICATIONS

When you study with Monash Arts, you'll be able to broaden or specify your studies to suit your interests and career goals.

DOUBLE MASTER'S PROGRAMS

Monash Arts offers the opportunity to study internationally through our broad range of double master's programs at select university partners, including:

- Institut Teknologi Bandung, Indonesia
- Jean Moulin Lyon III, France
- Kobe City University of Foreign Studies, Japan
- Monash University, Indonesia
- O.P. Jindal Global University, India
- Shanghai Jiao Tong University, China
- Tata Institute of Social Sciences, India
- Università di Bologna, Italy
- University of Warwick, United Kingdom.

Upon successful completion of your academic program at Monash and the academic program at the partner university, you'll be eligible to graduate with the degrees from both institutions, awarded separately.

FACILITIES

From the high-tech, multimillion-dollar Monash Media Lab, to the collaborative Learning and Teaching Building and our inspiring libraries providing resources, spaces and technologies, Monash's facilities will make your learning experience interactive, engaging and supportive.

[CLICK HERE](#)
for full details of our
graduate course offering

Master of Applied Linguistics

COURSE CODE: A6001 CRICOS CODE: 082651G

LOCATION **CLAYTON**
INTAKE **FEBRUARY, JULY**
FEES² **A\$45,100**
ENGLISH TEST LEVEL³ **A**
 INDUSTRY EXPERIENCE

ENTRY REQUIREMENTS ⁴	AVERAGE SCORE ⁵	DURATION ⁶
Bachelor's degree (or equivalent) in any field	Credit (60%)	2
Bachelor's degree (or equivalent) in a related field, OR	Credit (60%)	
Bachelor's degree (or equivalent) in any field + graduate certificate (or equivalent) in a related field	Pass (50%) ⁷	1.5 ⁸
Bachelor's (hons) degree (or equivalent) in a related field	Credit (60%)	1

Master of Bioethics

COURSE CODE: A6002 CRICOS CODE: 082652G

LOCATION **CLAYTON**
INTAKE **FEBRUARY, JULY**
FEES² **A\$46,000**
ENGLISH TEST LEVEL³ **A**
 INDUSTRY EXPERIENCE

ENTRY REQUIREMENTS ⁴	AVERAGE SCORE ⁵	DURATION ⁶
Bachelor's degree (or equivalent) in any field	Credit (60%)	2
Bachelor's degree (or equivalent) in a related field, OR	Credit (60%)	
Bachelor's degree (or equivalent) in any field + graduate certificate (or equivalent) in a related field	Pass (50%) ⁷	1.5
Bachelor's (hons) degree (or equivalent) in a related field	Credit (60%)	1

Master of Communications and Media Studies

COURSE CODE: A6003 CRICOS CODE: 082653F

LOCATION **CAULFIELD**
INTAKE **FEBRUARY, JULY**
FEES² **A\$48,100**
ENGLISH TEST LEVEL³ **A**
 INDUSTRY EXPERIENCE

ENTRY REQUIREMENTS ⁴	AVERAGE SCORE ⁵	DURATION ⁶
Bachelor's degree (or equivalent) in any field	Credit (60%)	2
Bachelor's degree (or equivalent) in a related field, OR	Credit (60%)	
Bachelor's degree (or equivalent) in any field + a graduate certificate (or equivalent) in a related field OR	Pass (50%) ⁷	1.5 ⁸
Bachelor's (hons) degree (or equivalent) in a related field	Credit (60%)	1

ALSO OFFERED:
 GRADUATE CERTIFICATE

Master of Cultural and Creative Industries

COURSE CODE: A6004 CRICOS CODE: 093655B

LOCATION **CAULFIELD**
INTAKE **FEBRUARY, JULY**
FEES² **A\$46,400**
ENGLISH TEST LEVEL³ **A**
 INDUSTRY EXPERIENCE

ENTRY REQUIREMENTS ⁴	AVERAGE SCORE ⁵	DURATION ⁶
Bachelor's degree (or equivalent) in any field	Credit (60%)	2
Bachelor's degree (or equivalent) in a related field, OR	Credit (60%)	
Bachelor's degree (or equivalent) in any field + graduate certificate (or equivalent) in a related field, OR	Pass (50%) ⁷	1.5 ⁸
Graduate certificate (or equivalent) in a related field + a minimum of five years' work experience in a relevant field	Credit (60%)	
Bachelor's (hons) degree (or equivalent) in a related field	Credit (60%)	1

ALSO OFFERED:
 GRADUATE CERTIFICATE

Master of International Development Practice

COURSE CODE: A6006 CRICOS CODE: 079175B

LOCATION **CAULFIELD, CLAYTON**
INTAKE **FEBRUARY, JULY**
FEES² **A\$46,000**
ENGLISH TEST LEVEL³ **A**
 INDUSTRY EXPERIENCE
 DOUBLE MASTER'S PROGRAM

ENTRY REQUIREMENTS ⁴	AVERAGE SCORE ⁵	DURATION ⁶
Bachelor's degree (or equivalent) in any field	Credit (60%)	2
Bachelor's degree (or equivalent) in a related field, OR	Credit (60%)	
Bachelor's degree (or equivalent) in any field + a graduate certificate (or equivalent) in a related field	Pass (50%) ⁷	1.5 ⁸
Bachelor's (hons) degree (or equivalent) in a related field	Credit (60%)	1

ALSO OFFERED:
 GRADUATE CERTIFICATE

Master of International Relations and Master of Journalism

COURSE CODE: A6011 CRICOS CODE: 0101140

LOCATION **CAULFIELD**
INTAKE **FEBRUARY, JULY**
FEES² **A\$46,000**
ENGLISH TEST LEVEL³ **C**
 INDUSTRY EXPERIENCE

ENTRY REQUIREMENTS ⁴	AVERAGE SCORE ⁵	DURATION ⁶
Bachelor's degree (or equivalent) in a related field, OR	Credit (60%)	
Bachelor's degree (or equivalent) in any field + a graduate certificate (or equivalent) in a related field	Pass (50%) ⁷	2

ALSO OFFERED:
 GRADUATE CERTIFICATE

Master of International Relations

COURSE CODE: A6010 CRICOS CODE: 082659M

LOCATION **CAULFIELD, CLAYTON**
INTAKE **FEBRUARY, JULY**
FEES² **A\$46,400**
ENGLISH TEST LEVEL³ **A**
 INDUSTRY EXPERIENCE
 DOUBLE MASTER'S PROGRAM

ENTRY REQUIREMENTS ⁴	AVERAGE SCORE ⁵	DURATION ⁶
Bachelor's degree (or equivalent) in any field	Credit (60%)	2
Bachelor's degree (or equivalent) in a related field, OR	Credit (60%)	
Bachelor's degree (or equivalent) in any field + graduate certificate (or equivalent) in a related field	Pass (50%) ⁷	1.5 ⁸
Bachelor's (hons) degree (or equivalent) in a related field	Credit (60%)	1

ALSO OFFERED:
 GRADUATE CERTIFICATE

Master of International Sustainable Tourism Management

COURSE CODE: A6012 CRICOS CODE: 078909K

LOCATION **CAULFIELD**
INTAKE **FEBRUARY, JULY**
FEES² **A\$49,000**
ENGLISH TEST LEVEL³ **A**
 INDUSTRY EXPERIENCE
 DOUBLE MASTER'S PROGRAM

ENTRY REQUIREMENTS ⁴	AVERAGE SCORE ⁵	DURATION ⁶
Bachelor's degree (or equivalent) in any field	Credit (60%)	2
Bachelor's degree (or equivalent) in a related field, OR	Credit (60%)	
Bachelor's degree (or equivalent) in any field + graduate certificate (or equivalent) in a related field	Pass (50%) ⁷	1.5 ⁸
Bachelor's (hons) degree (or equivalent) in a related field	Credit (60%)	1

Master of Interpreting and Translation Studies

COURSE CODE: A6007 CRICOS CODE: 089736B

LOCATION	ENTRY REQUIREMENTS ⁴	AVERAGE SCORE ⁵	DURATION ⁶
CLAYTON INTAKE FEBRUARY, JULY FEES ² A\$46,000 ENGLISH TEST LEVEL ³ A <input checked="" type="checkbox"/> INDUSTRY EXPERIENCE <input checked="" type="checkbox"/> DOUBLE MASTER'S PROGRAM <input checked="" type="checkbox"/> PROFESSIONALLY ACCREDITED	Bachelor's degree (or equivalent) in any field including advanced bilingual proficiency, OR Bachelor's degree (or equivalent) in any field + a graduate certificate (or equivalent) in any field including advanced bilingual proficiency	Credit (60%) Credit (60%) ⁷	2
	Bachelor's (hons) degree (or equivalent) in a related field including advanced bilingual proficiency	Credit (60%)	1.75
	SPECIALISATIONS		
	<ul style="list-style-type: none"> Interpreting and translation Translation 		

Master of Journalism

COURSE CODE: A6008 CRICOS CODE: 082656C

LOCATION	ENTRY REQUIREMENTS ⁴	AVERAGE SCORE ⁵	DURATION ⁶
CAULFIELD INTAKE FEBRUARY FEES ² A\$46,000 ENGLISH TEST LEVEL ³ C <input checked="" type="checkbox"/> INDUSTRY EXPERIENCE <input checked="" type="checkbox"/> DOUBLE MASTER'S PROGRAM	Bachelor's degree (or equivalent) in any field Bachelor's degree (or equivalent) in a related field OR Bachelor's degree (or equivalent) in any field + a graduate certificate (or equivalent) in a related field	Credit (60%) Credit (60%) Pass (50%) ⁷	2 1.5 ⁸
	Bachelor's (hons) degree (or equivalent) in a related field	Credit (60%)	1

ALSO OFFERED: GRADUATE CERTIFICATE**Master of Public Policy**

COURSE CODE: A6028 CRICOS CODE: 105166E

LOCATION	ENTRY REQUIREMENTS ⁴	AVERAGE SCORE ⁵	DURATION ⁶
CAULFIELD INTAKE FEBRUARY, JULY FEES ² A\$46,000 ENGLISH TEST LEVEL ³ A <input checked="" type="checkbox"/> INDUSTRY EXPERIENCE <input checked="" type="checkbox"/> DOUBLE MASTER'S PROGRAM	Bachelor's degree (or equivalent) in any field Bachelor's degree (or equivalent) in a related field, OR Bachelor's degree (or equivalent) in any field + a graduate certificate (or equivalent) in a related field, OR Graduate certificate (or equivalent) in a related field + a minimum of five years' work experience in a relevant field	Credit (60%) Credit (60%) Pass (50%) ⁷ Credit (60%)	2 1.5 ⁸
	Bachelor's (hons) degree (or equivalent) in a related field	Credit (60%)	1
	SPECIALISATIONS		
	<ul style="list-style-type: none"> Global studies Policy studies 		

ALSO OFFERED: GRADUATE CERTIFICATE**Master of Strategic Communications Management**

COURSE CODE: A6030 CRICOS CODE: 099501E

LOCATION	ENTRY REQUIREMENTS ⁴	AVERAGE SCORE ⁵	DURATION ⁶
CAULFIELD INTAKE FEBRUARY, JULY FEES ² A\$46,400 ENGLISH TEST LEVEL ³ A <input checked="" type="checkbox"/> INDUSTRY EXPERIENCE <input checked="" type="checkbox"/> DOUBLE MASTER'S PROGRAM	Bachelor's degree (or equivalent) in any field Bachelor's degree (or equivalent) in a related field, OR Bachelor's degree (or equivalent) in any field + a graduate certificate (or equivalent) in a related field, OR Graduate certificate (or equivalent) in a related field + a minimum of five years' work experience in a relevant field	Credit (60%) Credit (60%) Pass (50%) ⁷ Credit (60%)	2 1.5 ⁸
	Bachelor's (hons) degree (or equivalent) in a related field	Credit (60%)	1

ALSO OFFERED: GRADUATE CERTIFICATE

1 ShanghaiRanking (GRAS) Global Ranking of Academic Subjects, 2025.

2 2026 quoted fees, in Australian dollars and are subject to change. Fees are per 48 credit points – a standard full-time course load for a year.

3 This is only applicable if you have not satisfied the English language requirement; you're required to complete a Monash-approved English test such as IELTS (Academic), Internet Based TOEFL or Pearson Test of English (Academic). Other English tests may also be accepted and are assessed when you apply to Monash. See page 42 for English test levels

4 The entry requirements in this table only provide the basic course entry requirements. Your prior qualification/s must be accredited to the equivalent Australian level specified in the entry requirements table. Full details are available on our website.

5 In equivalent Monash University grading scale terms, a 100% scale where 50% is a pass.

6 Full time study mode. Even if you're eligible for a shorter course duration, you may elect to complete the longer duration. Part-time study may be available to international students studying onshore in Australia who hold specific visa categories. Please check your visa for confirmation.

7 You need to have achieved this average in both qualifications.

8 If you're eligible to enrol in the 1.5-year entry point, you have the option of completing this course intensively over a 12-month period by following the intensive course progression map.

For full course details visit our website, monash.edu/study**BUSINESS**

RANKED
NO.1 IN AUSTRALIA
BUSINESS ADMINISTRATION,
ECONOMICS AND FINANCE¹

RANKED
TOP 50 IN THE WORLD
ECONOMICS AND
ECONOMETRICS,
ACCOUNTING AND FINANCE,
AND MARKETING¹

Monash Business School is the largest faculty at Monash University, offering Australia's widest selection of business courses. Choose from graduate diplomas, and single and double master's programs.

We offer you a platform to specialise in the most impactful fields of business. Our teaching excellence, research impact and global rankings guarantee an internationally recognised education.

MADE FOR FLEXIBILITY

More than any other university in Australia, Monash allows you to shape your course to fit your future. We offer a wide range of double master's degrees that can be completed in as little as two years. Or you can opt for a streamlined single master's degree to fast-track your studies in one year. At Monash Business School, we're opening more doors and multiplying your career options.

GLOBAL STUDY

With more than 100 partner universities worldwide, Monash offers you the chance to challenge yourself and take your international study journey even further. Study and travel as part of your course to gain a broader perspective on your business career.

ALUMNI

Our expansive network allows you to keep in touch with fellow global professionals who have a strong shared history. You can use our alumni portal to make connections, be guided by experienced mentors and access professional development.

ACCREDITATION

Monash Business School has achieved accreditation from three global bodies. This level of accreditation is held by only 1% of business schools worldwide.



CLICK HERE
for full details of our
graduate course offering

Image: Caulfield campus, home of Monash Business School.

SINGLE DEGREE OFFERING**Master of Accounting**

COURSE CODE: B6038 CRICOS CODE: 112793H

LOCATION	ENTRY REQUIREMENTS ⁴	AVERAGE SCORE ⁵	DURATION ⁶
CAULFIELD INTAKE FEBRUARY, JULY FEES ² A\$59,900 ENGLISH TEST LEVEL ³ A <input checked="" type="checkbox"/> INDUSTRY EXPERIENCE <input checked="" type="checkbox"/> PROFESSIONALLY ACCREDITED	Bachelor's degree (or equivalent) with a major in accounting Bachelor's degree (or equivalent) with a major in accounting that meets the entry requirements of a professional accounting organisation, OR Bachelor's degree (or equivalent) with a major in accounting + a graduate certificate/honours degree (or equivalent), OR Bachelor's degree (or equivalent) with a major in accounting + two years' relevant professional experience, OR A bachelor's degree (or equivalent) with a major in accounting + full membership of an approved professional accounting organisation	High Credit (65%) High Credit (65%) High Credit (65%) ⁷	1.5 1

Master of Professional Accounting

COURSE CODE: B6011 CRICOS CODE: 082336G

LOCATION	ENTRY REQUIREMENTS ⁴	AVERAGE SCORE ⁵	DURATION ⁶
CAULFIELD INTAKE FEBRUARY, JULY FEES ² A\$59,900 ENGLISH TEST LEVEL ³ A <input checked="" type="checkbox"/> INDUSTRY EXPERIENCE <input checked="" type="checkbox"/> PROFESSIONALLY ACCREDITED	Bachelor's degree (or equivalent) in any field Bachelor's degree (or equivalent) in business, economics, commerce, law, humanities, arts, social science or science, OR Bachelor's (honours) degree (or equivalent) in any field, OR Bachelor's degree (or equivalent) in any field + a graduate certificate (or equivalent) in any field, OR Bachelor's degree (or equivalent) in any field + two years' relevant professional experience	Credit (60%) Credit (60%) Credit (60%) Credit (60%) ⁷	2 1.5

Master of Actuarial Studies

COURSE CODE: B6014 CRICOS CODE: 082326K

LOCATION CLAYTON INTAKE FEBRUARY, JULY FEES: A\$59,900 ENGLISH TEST LEVEL ³ A <input checked="" type="checkbox"/> INDUSTRY EXPERIENCE <input checked="" type="checkbox"/> PROFESSIONALLY ACCREDITED	ENTRY REQUIREMENTS ⁴	AVERAGE SCORE ⁵	DURATION ⁶
	Bachelor's degree (or equivalent) in any field + you must have passed an introductory statistics unit (or equivalent) and a first-year unit in algebra or calculus (or equivalent)	High Credit (65%)	2
	Bachelor's degree (or equivalent) in a related field, or graduate certificate (or equivalent) in a related field, OR	High Credit (65%)	1.5
	Bachelor's (hons) degree (or equivalent) in a related field	High Credit (65%)	

Master of Advanced Finance

COURSE CODE: B6039 CRICOS CODE: 112898K

LOCATION CAULFIELD INTAKE FEBRUARY, JULY FEES: A\$59,900 ENGLISH TEST LEVEL ³ A <input checked="" type="checkbox"/> INDUSTRY EXPERIENCE <input checked="" type="checkbox"/> PROFESSIONALLY ACCREDITED	ENTRY REQUIREMENTS ⁴	AVERAGE SCORE ⁵	DURATION ⁶
	Bachelor's degree (or equivalent) with a major or minor in finance	High Credit (65%)	1.5
	Bachelor's degree (or equivalent) with a major in finance from a Chartered Financial Analysts (CFA) Institute affiliated university, OR	High Credit (65%)	
	Bachelor's degree (or equivalent) with a major in finance + two years' relevant professional experience, OR		1
	Bachelor's degree (or equivalent) with a major in finance + a graduate certificate/honours degree (or equivalent), OR	High Credit (65%) ⁷	
	Bachelor's degree (or equivalent) in any field + the Level 1 CFA examination (pass) or equivalent		

Master of Applied Econometrics

COURSE CODE: B6036 CRICOS CODE: 112899J

LOCATION CAULFIELD INTAKE FEBRUARY, JULY FEES: A\$59,900 ENGLISH TEST LEVEL ³ A <input checked="" type="checkbox"/> INDUSTRY EXPERIENCE	ENTRY REQUIREMENTS ⁴	AVERAGE SCORE ⁵	DURATION ⁶
	Bachelor's degree (or equivalent) in a STEM or business area that includes a first-year statistics or mathematics unit or equivalent	High Credit (65%)	1.5
	Bachelor's degree (or equivalent) in a STEM or business area that includes an advanced unit on econometrics or statistics (or equivalent) + a graduate certificate / honours degree (or equivalent), OR	High Credit (65%) ⁷	1
	Bachelor's degree (or equivalent) in a STEM or business area that includes an advanced unit on econometrics and statistics (or equivalent) + two years' relevant professional experience		

Master of Applied Marketing

COURSE CODE: B6042 CRICOS CODE: 112901J

LOCATION CAULFIELD INTAKE FEBRUARY, JULY FEES: A\$59,900 ENGLISH TEST LEVEL ³ A <input checked="" type="checkbox"/> INDUSTRY EXPERIENCE	ENTRY REQUIREMENTS ⁴	AVERAGE SCORE ⁵	DURATION ⁶
	Bachelor's degree + two years' relevant professional experience		1.5
	Bachelor's degree (or equivalent) with a major or minor in marketing	High Credit (65%)	
	Bachelor's degree (or equivalent) with a major or minor in marketing + a graduate certificate / honours degree (or equivalent) in marketing, OR	High Credit (65%) ⁷	1
	Bachelor's degree (or equivalent) with a major or minor in marketing + two years' relevant professional experience		

Master of Banking and Finance

COURSE CODE: B6004 CRICOS CODE: 079580M

LOCATION CAULFIELD INTAKE FEBRUARY, JULY FEES: A\$59,900 ENGLISH TEST LEVEL ³ A <input checked="" type="checkbox"/> INDUSTRY EXPERIENCE	ENTRY REQUIREMENTS ⁴	AVERAGE SCORE ⁵	DURATION ⁶
	Bachelor's degree (or equivalent) in any field	Credit (60%)	2
	Graduate certificate (or equivalent) in a related field, OR		
	Bachelor's degree (or equivalent) in a related field, OR	Credit (60%)	1.5
	Bachelor's (hons) degree (or equivalent) in any field, OR		
	Successful completion of a Monash University Graduate Certificate of Business		
	Bachelor's (hons) degree in a related field	Credit (60%)	1

Master of Business

COURSE CODE: B6005 CRICOS CODE: 079669B

ALSO OFFERED:

- GRADUATE CERTIFICATE
- GRADUATE DIPLOMA

LOCATION CAULFIELD INTAKE FEBRUARY, JULY FEES: A\$59,900 ENGLISH TEST LEVEL ³ A <input checked="" type="checkbox"/> INDUSTRY EXPERIENCE	ENTRY REQUIREMENTS ⁴	AVERAGE SCORE ⁵	DURATION ⁶
	Bachelor's degree (or equivalent) in any field, or an approved pathway	Credit (60%)	2
	Bachelor's degree (or equivalent) in a related field, OR	Credit (60%)	1.5
	Four-year bachelor's (hons) degree (or equivalent) in any field, OR		
	Successful completion of a Monash University Graduate Certificate of Business		
	Bachelor's degree (or equivalent) in any field + a graduate certificate (or equivalent) in a related field, OR	Credit (60%) ⁸	1
	Bachelor's (hons) degree (or equivalent) in a related field	Credit (60%)	
	SPECIALISATIONS		
	<ul style="list-style-type: none"> • Business economics • Business studies • Contemporary management • Data analytics for business • Economics and health • Entrepreneurship • Financial analytics • Financial and risk management 	<ul style="list-style-type: none"> • International business • Marketing • Project management • Responsible business governance • Strategic communications management • Strategic management accounting • Supply chain management • Sustainable business 	

Master of Business Analytics⁹

COURSE CODE: B6022 CRICOS CODE: 0100564

LOCATION CLAYTON INTAKE FEBRUARY FEES: A\$59,900 ENGLISH TEST LEVEL ³ A <input checked="" type="checkbox"/> INDUSTRY EXPERIENCE <input checked="" type="checkbox"/> ADDITIONAL REQUIREMENTS	ENTRY REQUIREMENTS ⁴	AVERAGE SCORE ⁵	DURATION ⁶
	Bachelor's degree (or equivalent) in any field (which must include a first-year statistics unit)	High Credit (65%)	2
	Bachelor's degree (or equivalent) in a related field (which must include a first-year statistics unit)	High Credit (65%)	1.5

Master of Commerce

COURSE CODE: B6023 CRICOS CODE: 0101330

LOCATION CAULFIELD INTAKE FEBRUARY, JULY FEES: A\$41,000 ENGLISH TEST LEVEL ³ A <input checked="" type="checkbox"/> ADDITIONAL REQUIREMENTS	ENTRY REQUIREMENTS ⁴	AVERAGE SCORE ⁵	DURATION ⁶
	Bachelor's degree (or equivalent) in a related field	Distinction (70%)	2
	Bachelor's (hons) degree (or equivalent) in a related field	High Distinction (75%)	1
	SPECIALISATIONS		
	<ul style="list-style-type: none"> • Accounting • Banking and Finance • Econometrics and business statistics • Economics 	<ul style="list-style-type: none"> • Health economics • Management • Marketing studies 	

Master of Economics

COURSE CODE: B6030 CRICOS CODE: 108688K

LOCATION CAULFIELD INTAKE FEBRUARY, JULY FEES: A\$59,900 ENGLISH TEST LEVEL ³ A <input checked="" type="checkbox"/> INDUSTRY EXPERIENCE	ENTRY REQUIREMENTS ⁴	AVERAGE SCORE ⁵	DURATION ⁶
	Bachelor's degree (or equivalent) in any field	High Credit (65%)	2
	Bachelor's degree (or equivalent) in a related field that includes an intermediate microeconomics unit, an intermediate macroeconomics unit, an econometrics unit and a mathematics unit, OR	High Credit (65%) ⁷	1.5
	Bachelor's degree (or equivalent) + graduate certificate in a related field that includes an intermediate microeconomics unit, an intermediate macroeconomics unit, an econometrics unit and a mathematics unit		
	Bachelor's degree (or equivalent) in a related field that includes an intermediate microeconomics unit, an intermediate macroeconomics unit, an econometrics unit and a mathematics unit + an honours degree, OR	High Credit (65%)	1
	Bachelor's degree (or equivalent) in a related field that includes an intermediate microeconomics unit, an intermediate macroeconomics unit, an econometrics unit and a mathematics unit + two years' relevant professional experience		

Graduate Diploma of Economic Analytics

COURSE CODE: B5007 CRICOS CODE: 103503J

LOCATION CAULFIELD INTAKE FEBRUARY, JULY FEES: A\$59,900 ENGLISH TEST LEVEL ³ A	ENTRY REQUIREMENTS ⁴	AVERAGE SCORE ⁵	DURATION ⁶
	Bachelor's degree (or equivalent) in any field + you must have passed a first-year undergraduate statistics or mathematics unit (or equivalent)	Credit (60%)	1
	Bachelor's degree (or equivalent) in a related field, OR	High Credit (65%)	
	Bachelor's degree (or equivalent) in any field + a graduate certificate (or equivalent) in a related field, OR	High Credit (65%) ⁸	6 months
	Bachelor's (hons) degree (or equivalent) in a related field	High Credit (65%)	

Master of Global Business

COURSE CODE: B6040 CRICOS CODE: 112902H

LOCATION CAULFIELD INTAKE FEBRUARY, JULY FEES: A\$59,900 ENGLISH TEST LEVEL ³ A <input checked="" type="checkbox"/> INDUSTRY EXPERIENCE	ENTRY REQUIREMENTS ⁴	AVERAGE SCORE ⁵	DURATION ⁶
	Bachelor's degree (or equivalent) with a major or minor in a related field, OR	High Credit (65%)	1.5
	Bachelor's degree (or equivalent) + two years' relevant professional experience		
	Bachelor's degree (or equivalent) with a major or minor in a related field + a graduate certificate/honours degree (or equivalent), OR	High Credit (65%) ⁷	1
	Bachelor's degree (or equivalent) with a major or minor in a related field + two years' relevant professional experience		

Master of Management

COURSE CODE: B6041 CRICOS CODE: 112900K

LOCATION CAULFIELD INTAKE FEBRUARY, JULY FEES: A\$59,900 ENGLISH TEST LEVEL ³ A <input checked="" type="checkbox"/> INDUSTRY EXPERIENCE	ENTRY REQUIREMENTS ⁴	AVERAGE SCORE ⁵	DURATION ⁶
	Bachelor's degree (or equivalent) with a major or minor in a related field, OR	High Credit (65%)	1.5
	Bachelor's degree (or equivalent) + two years' relevant professional experience		
	Bachelor's degree (or equivalent) with a major or minor in a related field + a graduate certificate/honours degree (or equivalent), OR	High Credit (65%) ⁷	1
	Bachelor's degree (or equivalent) with a major or minor in a related field + two years' relevant professional experience		

Master of Regulation and Compliance

COURSE CODE: B6037 CRICOS CODE: 112903G

LOCATION CAULFIELD INTAKE FEBRUARY, JULY FEES: A\$59,900 ENGLISH TEST LEVEL ³ A <input checked="" type="checkbox"/> INDUSTRY EXPERIENCE	ENTRY REQUIREMENTS ⁴	AVERAGE SCORE ⁵	DURATION ⁶
	Bachelor's degree (or equivalent) with a major or minor in a related field, OR	High Credit (65%)	1.5
	Bachelor's degree (or equivalent) + two years' relevant professional experience		
	Bachelor's degree (or equivalent) with a major or minor in a related field + a graduate certificate / honours degree (or equivalent), OR	High Credit (65%) ⁷	1
	Bachelor's degree (or equivalent) with a major or minor in a related field + two years relevant professional experience		

DOUBLE DEGREE OFFERING**Master of Applied Econometrics and Master of Advanced Finance**

COURSE CODE: B6043 CRICOS CODE: 112897M

LOCATION CAULFIELD INTAKE FEBRUARY, JULY FEES: A\$59,900 ENGLISH TEST LEVEL ³ A <input checked="" type="checkbox"/> PROFESSIONALLY ACCREDITED	ENTRY REQUIREMENTS ⁴	AVERAGE SCORE ⁵	DURATION ⁶
	Bachelor's degree (or equivalent) with a major or minor in finance that includes a first-year statistics or mathematics unit or equivalent, OR	High Credit (65%)	2
	Bachelor's degree (or equivalent) + the Level 1 CFA examination (pass) or equivalent		

Master of Global Business and Master of Accounting

COURSE CODE: B6046 CRICOS CODE: 112890G

LOCATION CAULFIELD INTAKE FEBRUARY, JULY FEES: A\$59,900 ENGLISH TEST LEVEL ³ A <input checked="" type="checkbox"/> INDUSTRY EXPERIENCE <input checked="" type="checkbox"/> PROFESSIONALLY ACCREDITED	ENTRY REQUIREMENTS ⁴	AVERAGE SCORE ⁵	DURATION ⁶
	Bachelor's degree (or equivalent) with a major in accounting	High Credit (65%)	2

Master of Global Business and Master of Advanced Finance

COURSE CODE: B6048 CRICOS CODE: 112891F

LOCATION CAULFIELD INTAKE FEBRUARY, JULY FEES: A\$59,900 ENGLISH TEST LEVEL ³ A <input checked="" type="checkbox"/> INDUSTRY EXPERIENCE <input checked="" type="checkbox"/> PROFESSIONALLY ACCREDITED	ENTRY REQUIREMENTS ⁴	AVERAGE SCORE ⁵	DURATION ⁶
	Bachelor's degree (or equivalent) with a major or minor in finance, OR	High Credit (65%)	2
	Bachelor's degree (or equivalent) + the Level 1 CFA examination (pass) or equivalent		

Master of Global Business and Master of Applied Econometrics

COURSE CODE: B6045 CRICOS CODE: 112894C

LOCATION CAULFIELD INTAKE FEBRUARY, JULY FEES: A\$59,900 ENGLISH TEST LEVEL ³ A <input checked="" type="checkbox"/> INDUSTRY EXPERIENCE	ENTRY REQUIREMENTS ⁴	AVERAGE SCORE ⁵	DURATION ⁶
	Bachelor's degree (or equivalent) in a STEM or business area that includes a first-year statistics or mathematics unit or equivalent	High Credit (65%)	2

Master of Global Business and Master of Applied Marketing

COURSE CODE: B6047 CRICOS CODE: 112892E

LOCATION CAULFIELD INTAKE FEBRUARY, JULY FEES: A\$59,900 ENGLISH TEST LEVEL ³ A <input checked="" type="checkbox"/> INDUSTRY EXPERIENCE	ENTRY REQUIREMENTS ⁴	AVERAGE SCORE ⁵	DURATION ⁶
	Bachelor's degree (or equivalent) with a major or minor in marketing, OR	High Credit (65%)	2
	Bachelor's degree (or equivalent) + at least two years' relevant professional experience		

Master of Global Business and Master of Management

COURSE CODE: B6049 CRICOS CODE: 112895B

LOCATION CAULFIELD INTAKE FEBRUARY, JULY FEES: A\$59,900 ENGLISH TEST LEVEL ³ A <input checked="" type="checkbox"/> INDUSTRY EXPERIENCE	ENTRY REQUIREMENTS ⁴	AVERAGE SCORE ⁵	DURATION ⁶
	Bachelor's degree (or equivalent) with a major or minor in a related field, OR	High Credit (65%)	2
	Bachelor's degree (or equivalent) + two years' relevant professional experience		

Master of Global Business and Master of Public Policy

COURSE CODE: B6065 CRICOS CODE: 116875G

LOCATION CAULFIELD INTAKE FEBRUARY, JULY FEES: A\$59,900 ENGLISH TEST LEVEL ³ A <input checked="" type="checkbox"/> INDUSTRY EXPERIENCE	ENTRY REQUIREMENTS ⁴	AVERAGE SCORE ⁵	DURATION ⁶
	Bachelor's degree (or equivalent) with a major in a related field, OR	High Credit (65%)	2
	Bachelor's degree (or equivalent qualification) + two years' relevant professional experience		

Master of Global Business and Master of Regulation and Compliance

COURSE CODE: B6044 CRICOS CODE: 112896A

LOCATION CAULFIELD INTAKE FEBRUARY, JULY FEES ² A\$59,900 ENGLISH TEST LEVEL ³ A <input checked="" type="checkbox"/> INDUSTRY EXPERIENCE	ENTRY REQUIREMENTS ⁴	AVERAGE SCORE ⁵	DURATION ⁶
	Bachelor's degree (or equivalent) with a major or minor in a related field, OR	High Credit (65%)	2
	Bachelor's degree (or equivalent) + at least two years' relevant professional experience		

Master of Management and Master of Accounting

COURSE CODE: B6053 CRICOS CODE: 112904F

LOCATION CAULFIELD INTAKE FEBRUARY, JULY FEES ² A\$59,900 ENGLISH TEST LEVEL ³ A <input checked="" type="checkbox"/> INDUSTRY EXPERIENCE <input checked="" type="checkbox"/> PROFESSIONALLY ACCREDITED	ENTRY REQUIREMENTS ⁴	AVERAGE SCORE ⁵	DURATION ⁶
	Bachelor's degree (or equivalent) with a major in accounting	High Credit (65%)	2

Master of Management and Master of Advanced Finance

COURSE CODE: B6051 CRICOS CODE: 112905E

LOCATION CAULFIELD INTAKE FEBRUARY, JULY FEES ² A\$59,900 ENGLISH TEST LEVEL ³ A <input checked="" type="checkbox"/> INDUSTRY EXPERIENCE <input checked="" type="checkbox"/> PROFESSIONALLY ACCREDITED	ENTRY REQUIREMENTS ⁴	AVERAGE SCORE ⁵	DURATION ⁶
	Bachelor's degree (or equivalent) with a major or minor in finance, OR	High Credit (65%)	2
	Bachelor's degree (or equivalent) + the Level 1 CFA examination (pass) or equivalent		

Master of Management and Master of Applied Marketing

COURSE CODE: B6052 CRICOS CODE: 112888A

LOCATION CAULFIELD INTAKE FEBRUARY, JULY FEES ² A\$59,900 ENGLISH TEST LEVEL ³ A <input checked="" type="checkbox"/> INDUSTRY EXPERIENCE	ENTRY REQUIREMENTS ⁴	AVERAGE SCORE ⁵	DURATION ⁶
	Bachelor's degree (or equivalent) with a major or minor in marketing, OR	High Credit (65%)	2
	Bachelor's degree (or equivalent) + two years' relevant professional experience		

Master of Management and Master of Public Policy

COURSE CODE: B6064 CRICOS CODE: 116876F

LOCATION CAULFIELD INTAKE FEBRUARY, JULY FEES ² A\$59,900 ENGLISH TEST LEVEL ³ A <input checked="" type="checkbox"/> INDUSTRY EXPERIENCE	ENTRY REQUIREMENTS ⁴	AVERAGE SCORE ⁵	DURATION ⁶
	Bachelor's degree (or equivalent) with a major in a related field, OR	High Credit (65%)	2
	Bachelor's degree (or equivalent qualification) + five years' relevant professional experience		

Master of Management and Master of Regulation and Compliance

COURSE CODE: B6050 CRICOS CODE: 112889M

LOCATION CAULFIELD INTAKE FEBRUARY, JULY FEES ² A\$59,900 ENGLISH TEST LEVEL ³ A <input checked="" type="checkbox"/> INDUSTRY EXPERIENCE	ENTRY REQUIREMENTS ⁴	AVERAGE SCORE ⁵	DURATION ⁶
	Bachelor's degree (or equivalent) with a major or minor in a related field, OR	High Credit (65%)	2
	Bachelor's degree (or equivalent) + two years' relevant professional experience		

1 ShanghaiRanking's Global Ranking of Academic Subjects, 2025.

2 2026 quoted fees, in Australian dollars and are subject to change. Fees are per 48 credit points – a standard full-time course load for a year.

3 This is only applicable if you have not satisfied the English language requirement; you're required to complete a Monash-approved English test such as IELTS (Academic), Internet Based TOEFL or Pearson Test of English (Academic). Other English tests may also be accepted and are assessed when you apply to Monash.

4 The entry requirements in this table only provide the basic course entry requirements. Your prior qualification/s must be accredited to the equivalent Australian level specified in the entry requirements table. Full details are available on our website.

5 In equivalent Monash University grading scale terms, a 100% scale where 50% is a pass.

6 Duration is expressed in years, and reflects full-time study mode. Even if you're eligible for a shorter course duration, you may elect to complete the longer duration.

7 This grade average is required for the bachelor's degree only.

8 You'll need to achieve this grade average in both qualifications.

9 There are limited places for this course. Meeting the entry requirements may not be enough to guarantee entry into this course. You will also need to submit a Candidate Statement.

For full course details visit our website, monash.edu/study**EDUCATION,
PSYCHOLOGY
AND COUNSELLING**RANKED
NO.5 IN THE
WORLD
EDUCATION¹ **CLICK HERE**
for full details of our
graduate course offering

Through our faculty you can become a teacher, or explore further studies in education, psychology or counselling.

ACCREDITATION

Our teaching, counselling and psychology courses are all accredited so you'll be able to practise in your chosen profession once you've completed your studies.

RANKINGS

- Ranked No.1 in Australia for Education (ShanghaiRanking (GRAS) 2025; US News ranking 2025-2026)
- 94% of graduates are employed within four months (QILT survey 2021–2023).

PROFESSIONAL PLACEMENTS

Our teaching, counselling and psychology courses offer the opportunity for professional development through placements.

Education and Teaching**Master of Applied Behaviour Analysis**

COURSE CODE: D6015 CRICOS CODE: 102715E

LOCATION CLAYTON INTAKE FEBRUARY, JULY FEES ² A\$42,300 ENGLISH TEST LEVEL ³ A	ENTRY REQUIREMENTS ⁴	AVERAGE SCORE ⁵	DURATION ⁶
	Bachelor's degree (or equivalent) in any field	Credit (60%)	2
	Bachelor's degree (or equivalent) in any field + two years' full-time equivalent relevant professional experience, OR		
	Bachelor's degree (or equivalent) in education or a related field, OR	Credit (60%)	1.5
	Bachelor's (hons) degree, or graduate certificate, or graduate diploma, or master's degree (or equivalent) in any field		
	Bachelor's degree (or equivalent) in education or a related field + two years' full-time equivalent relevant professional experience, OR		
	Bachelor's (hons) degree, or graduate certificate, or graduate diploma, or master's degree (or equivalent) in any field + two years' full-time equivalent relevant professional experience, OR	Credit (60%)	1
	Bachelor's (hons) degree or a graduate certificate or a graduate diploma, or master's degree (or equivalent) in education or a related field		

Master of Education

COURSE CODE: D6002 CRICOS CODE: 078862J

The degree you're awarded will reflect your chosen specialisation

LOCATION CLAYTON INTAKE FEBRUARY, JULY FEES ² A\$43,800 ENGLISH TEST LEVEL ³ A	ENTRY REQUIREMENTS ⁴	AVERAGE SCORE ⁵	DURATION ⁶
	Bachelor's degree (or equivalent) in any field	Credit (60%)	2
	Bachelor's degree (or equivalent) in education or a related field, OR		
	Bachelor's (hons) degree, or graduate certificate, or graduate diploma, or master's degree (or equivalent) in any field, OR	Credit (60%)	1.5
	Bachelor's degree (or equivalent) in any field + two years' full-time equivalent relevant professional experience		
	Bachelor's degree (or equivalent) in education or a related field + two years of full-time equivalent relevant professional experience, OR		
	Bachelor's (hons) degree, or graduate certificate, or graduate diploma, or master's degree (or equivalent) in education or a related field, OR	Credit (60%)	1
	Bachelor's (hons) degree, or graduate certificate, or graduate diploma, or master's degree (or equivalent) in any field + two years of full-time equivalent relevant professional experience		

SPECIALISATIONS

- Digital Learning
- Early Childhood Education
- General Education Studies
- Inclusive and Special Education

Graduate Certificate of Education Studies

COURSE CODE: D4001 CRICOS CODE: 084062B

LOCATION	ENTRY REQUIREMENTS ⁴	AVERAGE SCORE ⁵	DURATION ⁶
CLAYTON INTAKE FEBRUARY, JULY FEES ² A\$21,150 (approx. fee for 24-credit-point course) ENGLISH TEST LEVEL ³ A	Bachelor's degree (or equivalent) in any field, OR Five years' relevant full-time informal learning, with a recommendation letter or reference from an employer, will be considered on a case-by-case basis	Pass (50%)	6 months

Master of Educational Leadership

COURSE CODE: D6013 CRICOS CODE: 0101139

LOCATION	ENTRY REQUIREMENTS ⁴	AVERAGE SCORE ⁵	DURATION ⁶
CLAYTON INTAKE FEBRUARY, JULY FEES ² A\$43,800 ENGLISH TEST LEVEL ³ A	Bachelor's degree (or equivalent) in any field	Credit (60%)	2
	Bachelor's degree (or equivalent) in a related field, OR Bachelor's (hons) degree, or graduate certificate, or graduate diploma, or master's degree (or equivalent) in any field	Credit (60%)	1.5
	Bachelor's degree (or equivalent) in any field + two years' relevant professional experience		
	Bachelor's degree (or equivalent) in a related field + two years' relevant professional experience, OR Bachelor's (hons) degree, or graduate certificate, or graduate diploma, or master's degree (or equivalent) in a related field	Credit (60%)	1
	Bachelor's (hons) degree, or graduate certificate, or graduate diploma, or master's degree (or equivalent) in any field + two years' relevant professional experience		

Graduate Certificate of Educational Research

COURSE CODE: D4004 CRICOS CODE: 079582J

LOCATION	ENTRY REQUIREMENTS ⁴	AVERAGE SCORE ⁵	DURATION ⁶
CLAYTON INTAKE JANUARY, JULY FEES ² A\$21,150 (approx. fee for 24-credit-point course) ENGLISH TEST LEVEL ³ A	A four-year bachelor's degree (or equivalent) in education or a related field	High Credit (65%)	6 months

Master of Teaching

COURSE CODE: D6001 CRICOS CODE: 083045M

The degree you're awarded will reflect your chosen specialisation

LOCATION	ENTRY REQUIREMENTS ⁴	AVERAGE SCORE ⁵	DURATION ⁶
CLAYTON INTAKE FEBRUARY FEES ² A\$45,000 ENGLISH TEST LEVEL ³ E	Bachelor's degree (or equivalent) in any field	Credit (60%)	2
	SPECIALISATIONS		
	<ul style="list-style-type: none"> Early Childhood Education Early Childhood and Primary Education Primary Education Primary and Secondary Education Secondary Education⁷ 		

Master of TESOL

COURSE CODE: D6005 CRICOS CODE: 079104F

LOCATION	ENTRY REQUIREMENTS ⁴	AVERAGE SCORE ⁵	DURATION ⁶
CLAYTON INTAKE FEBRUARY, JULY FEES ² A\$44,500 ENGLISH TEST LEVEL ³ A	Bachelor's degree (or equivalent) in any field	Credit (60%)	2
	Bachelor's degree (or equivalent) in a related field, OR Bachelor's (hons) degree, or graduate certificate, or graduate diploma, or master's degree (or equivalent) in any field, OR Bachelor's degree (or equivalent) in any field + two years' full-time equivalent relevant professional experience	Credit (60%)	1.5
	Bachelor's (hons) degree, or graduate certificate, or graduate diploma, or master's degree (or equivalent) in a related field, OR Bachelor's (hons) degree, or graduate certificate, or graduate diploma, or master's degree (or equivalent) in any field + two years' full-time equivalent relevant professional experience, OR Bachelor's degree (or equivalent) in a related field + two years' full-time equivalent relevant professional experience	Credit (60%)	1

Counselling**Master of Counselling⁸**

COURSE CODE: D6003 CRICOS CODE: 083043B

ALSO OFFERED: GRADUATE CERTIFICATE

LOCATION	ENTRY REQUIREMENTS ⁴	AVERAGE SCORE ⁵	DURATION ⁶
CLAYTON INTAKE FEBRUARY, JULY FEES ² A\$44,600 ENGLISH TEST LEVEL ³ D	Bachelor's degree (or equivalent) in any field	High credit (65%)	2
	Bachelor's degree (or equivalent) in any field + two years' full-time equivalent relevant professional experience, OR Bachelor's degree (or equivalent) in a related field, OR Bachelor's (hons) degree, or graduate certificate, or graduate diploma, or master's degree (or equivalent) in any field	High credit (65%)	1.5
	Bachelor's degree (or equivalent) in any field + two years' relevant professional experience		
	Bachelor's degree (or equivalent) in a related field + two years' relevant professional experience, OR Bachelor's (hons) degree, or graduate certificate, or graduate diploma, or master's degree (or equivalent) in any field + two years' full-time equivalent relevant professional experience, OR Bachelor's (hons) degree, or graduate certificate or graduate diploma, or master's degree (or equivalent) in a related field	High credit (65%)	1

Psychology**Master of Educational and Developmental Psychology⁸**

COURSE CODE: D6007 CRICOS CODE: 038585A

LOCATION	ENTRY REQUIREMENTS ⁴	AVERAGE SCORE ⁵	DURATION ⁶
CLAYTON INTAKE FEBRUARY FEES ² A\$48,100 ENGLISH TEST LEVEL ³ F	A fourth year of psychology study from any course accredited by the APAC, which may be a graduate diploma or bachelor's honours degree	Distinction (70%)	2
	<input checked="" type="checkbox"/> PROFESSIONALLY ACCREDITED <input checked="" type="checkbox"/> INDUSTRY EXPERIENCE <input checked="" type="checkbox"/> ADDITIONAL REQUIREMENTS		

Master of Professional Psychology⁸

COURSE CODE: D6008 CRICOS CODE: 079583G

LOCATION	ENTRY REQUIREMENTS ⁴	AVERAGE SCORE ⁵	DURATION ⁶
CLAYTON INTAKE FEBRUARY FEES ² A\$48,100 ENGLISH TEST LEVEL ³ F	A fourth year of psychology study from any course accredited by the APAC, which may be a graduate diploma or a bachelor's honours degree	High Credit (65%)	1
	<input checked="" type="checkbox"/> PROFESSIONALLY ACCREDITED <input checked="" type="checkbox"/> INDUSTRY EXPERIENCE <input checked="" type="checkbox"/> ADDITIONAL REQUIREMENTS		

Graduate Diploma of Professional Psychology

COURSE CODE: D5002 CRICOS CODE: 084063A

LOCATION	ENTRY REQUIREMENTS ⁴	AVERAGE SCORE ⁵	DURATION ⁶
CLAYTON INTAKE FEBRUARY FEES ² A\$48,100 ENGLISH TEST LEVEL ³ F	Bachelor's degree (or equivalent) with an extended major in psychology from any course accredited by the APAC	Distinction (70%) ⁹	1
	<input checked="" type="checkbox"/> PROFESSIONALLY ACCREDITED		

1 US News ranking 2025-2026.

2 2026 quoted fees, in Australian dollars and are subject to change. Fees are per 48 credit points – a standard full-time course load for a year.

3 This is only applicable if you have not satisfied the English language requirement; you're required to complete a Monash-approved English test such as IELTS (Academic), Internet Based TOEFL or Pearson Test of English (Academic). Other English tests may also be accepted and are assessed when you apply to Monash. See page 42 for English test levels.

4 For the Graduate Diploma of Professional Psychology, Master of Educational and Developmental Psychology, and Master of Professional Psychology, additional rules apply to comply with the Australian Health Practitioner Regulation Agency registration standards and English language requirements. See our website for more information.

5 The entry requirements in this table only provide the basic course entry requirements. Your prior qualification/s must be accredited to the equivalent Australian level specified in the entry requirements table. Full details are available on our website.

6 In equivalent Monash University grading scale terms, a 100% scale where 50% is a pass.

7 Duration is expressed in years, and reflects full-time study mode. Even if you're eligible for a shorter course duration, you may elect to complete the longer duration.

8 The Master of Teaching in Secondary Education is also offered in accelerated mode and can be completed in 1.5 years.

9 There are limited places for this course. Meeting the entry requirements may not be enough to guarantee entry into this course.

10 You'll need to achieve a distinction (70%) average in third-year psychology.

For full course details visit our website, monash.edu/study

ENGINEERING

INDUSTRY EXPERIENCE

Open new possibilities for your career with an Industry Experience (IE) placement with one of our many partner organisations or connect with industry on campus through the Monash Innovation Labs.

You'll gain practical work experience and establish networks through industry-based projects, seminars and internships while you complete your master qualification.

ACCREDITATION

The Master of Professional Engineering is globally recognised and accredited by Engineers Australia.



Australia is a signatory to the Washington Accord, which means Monash Engineering graduates of accredited degrees can work in any other signatory country, without the need to requalify.

EMPLOYABILITY AND CAREERS

Monash Engineering offers a suite of degrees that will propel your career whether you seek a professionally accredited degree or a course that gives you advanced technical knowledge. In fact, 94% of our postgraduates secure full-time employment within four months¹.

Our graduates have gone on to successful careers with leading global organisations including Tesla, NASA, Dyson, Google, Nestlé, Tata, Department of Transport, BHP, PepsiCo, Deloitte, Department of Defence, Apple, Rocket Lab, PwC, Environment Protection Authority and the United Nations. And many go on to form their own companies.

Improve your employment outcomes, leverage our worldwide industry connections and set yourself up for career success with a graduate engineering degree at Monash.

SCHOLARSHIPS

Monash offers a range of scholarships and awards to our students. For more information, visit go.monash.edu/engineering-scholarships

¹ QILT Graduate Outcomes Survey, 2023

[CLICK HERE](#)
for full details of our graduate course offering

Image: Engineering student at work using a 3D printer; Design & Build Studios, Clayton campus.

Master of Advanced Engineering

COURSE CODE: E6017 CRICOS CODE: 114826K

The master's degree you're awarded will reflect your chosen specialisation

LOCATION	ENTRY REQUIREMENTS ³	AVERAGE SCORE ⁴	DURATION ⁵
CLAYTON INTAKE FEBRUARY, JULY FEES ¹ A\$57,900 ENGLISH TEST LEVEL ² A	Four-year Bachelor of Engineering (or equivalent) in a discipline relevant to the specialisation to be studied within the master's course (as approved by the faculty)	High Credit (65%)	2
SPECIALISATIONS			
<ul style="list-style-type: none"> Bioresource engineering Engineering management Medical engineering Power systems engineering Renewable energy engineering 		<ul style="list-style-type: none"> Robotic construction engineering Robotics engineering Smart manufacturing engineering Urban systems engineering 	

Master of Engineering

COURSE CODE: E6014 CRICOS CODE: 104589A

The master's degree you're awarded will reflect your chosen specialisation

LOCATION	ENTRY REQUIREMENTS ³	AVERAGE SCORE ⁴	DURATION ⁵
CLAYTON INTAKE FEBRUARY, JULY FEES ¹ A\$59,600 ENGLISH TEST LEVEL ² A	Four-year Bachelor of Engineering (or equivalent) in a discipline relating to the specialisation to be studied within the master's course (as approved by the faculty)	High Credit (65%)	1
SPECIALISATIONS			
<ul style="list-style-type: none"> Biological engineering Civil engineering Electrical engineering Energy transitions engineering Engineering management 		<ul style="list-style-type: none"> Materials engineering Mechanical engineering Power systems engineering Renewable energy engineering Smart manufacturing engineering 	

Master of Professional Engineering

COURSE CODE: E6011 CRICOS CODE: 102717C

The master's degree you're awarded will reflect your chosen specialisation

LOCATION	ENTRY REQUIREMENTS ³	AVERAGE SCORE ⁴	DURATION ⁵
CLAYTON INTAKE FEBRUARY, JULY ⁶ FEES ¹ A\$57,900 ENGLISH TEST LEVEL ² A	Bachelor's degree (or equivalent) with prior studies in mathematics (including linear algebra and calculus), physics and/or chemistry as required by the specialisation chosen for admission	High Credit (65%)	3
<input checked="" type="checkbox"/> PROFESSIONALLY ACCREDITED <input checked="" type="checkbox"/> ADDITIONAL REQUIREMENTS	Four-year Bachelor of Engineering degree (or equivalent) in a discipline relating to the specialisation to be studied within the master's course (as approved by the faculty)	High Credit (65%)	2
SPECIALISATIONS			
<ul style="list-style-type: none"> Chemical engineering Civil engineering Electrical engineering 		<ul style="list-style-type: none"> Materials engineering Mechanical engineering 	

Master of Transport and Mobility Planning

COURSE CODE: E6016 CRICOS CODE: 113907F

LOCATION	ENTRY REQUIREMENTS ³	AVERAGE SCORE ⁴	DURATION ⁵
CLAYTON INTAKE FEBRUARY, JULY FEES ¹ A\$59,600 ENGLISH TEST LEVEL ² A	Four-year Bachelor of Engineering degree (or equivalent) in transportation, civil engineering, environmental engineering, sustainable engineering, infrastructure engineering, urban/city/town planning or other related fields, OR	High Credit (65%)	1
<input checked="" type="checkbox"/> ADDITIONAL REQUIREMENTS	Four-year Bachelor of Engineering degree (or equivalent) in transportation, environmental sciences, human geography, architecture, land surveying, human geography or other related fields + a minimum of three years' professional work experience in transport, urban, city, town or regional planning		

¹ 2026 quoted fees, in Australian dollars and are subject to change. Fees are per 48 credit points – a standard full-time course load for a year.
² This is only applicable if you have not satisfied the English language requirement; you're required to complete a Monash-approved English test such as IELTS (Academic), Internet Based TOEFL or Pearson Test of English (Academic). Other English tests may also be accepted and are assessed when you apply to Monash. See page 42 for English test levels.
³ The entry requirements in this table only provide the basic course entry requirements. Your prior qualification/s must be accredited to the equivalent Australian level specified in the entry requirements table. Full details are available on our website.
⁴ In equivalent Monash University grading scale terms, a 100% scale where 50% is a pass.
⁵ Duration is expressed in years. Even if you're eligible for a shorter course duration, you may elect to complete the longer duration.
⁶ July entry is not available for the Civil and Chemical engineering specialisations in the three-year entry option.

For full course details visit our website, monash.edu/study

INFORMATION TECHNOLOGY

RANKED
NO. 2 IN AUSTRALIA
FOR COMPUTER SCIENCE¹

NO. 40 GLOBALLY
FOR DATA SCIENCE AND AI²

Monash is the only university in the prestigious Group of Eight with an entire faculty dedicated to Information Technology.

Our graduate programs cover every major area of our field – letting you develop in-demand knowledge across the most impactful areas in IT.

[CLICK HERE](#) for full details of our graduate course offering

PROFESSIONAL RECOGNITION

All our master's courses (by coursework) are accredited by the Australian Computer Society – the professional association for information and communications technology in Australia.

HANDS-ON EXPERIENCE

All of our students gain valuable practical experience, ensuring they are highly sought-after in the job market:

- Industry Experience Studio Projects – apply the skills and knowledge you've gained to develop an IT-driven solution to a societal issue.
- Minor thesis – showcase your mastery of a subject area while augmenting and contributing new knowledge.

INDUSTRY MENTORING AND CONNECTIONS

Our Dean's Industry Advisory Council consists of leading professionals from major organisations who use their expertise to shape our courses – ensuring they align with skills gaps in the workforce.

We also embed industry mentorship and connection into our Industry Experience Studio Projects, student teams and other initiatives to augment your skill set.

GRANTS

New international students who have an offer to study are automatically assessed for a Monash international study grant based on study level, academic criteria and citizenship.

FACILITIES

Our cutting-edge spaces are primarily located at Monash Clayton campus and include our:

- Mixed Reality Studio
- Cybersecurity Studio
- Embodied Visualisation Lab
- Makerspaces
- Human Interaction Lab
- 360-seat teaching space.

We also have world-class facilities at Caulfield campus, such as our SensiLab – the home of computational creativity.

Image: IT student interacting with GINNY the AI social robot, Clayton campus.

¹ THE World University Rankings by Subject 2025

² QS World University Rankings 2025

³ 2026 quoted fees, in Australian dollars and are subject to change. Fees are per 48 credit points – a standard full-time course load for a year.

⁴ This is only applicable if you have not satisfied the English language requirement; you're required to complete a Monash-approved English test such as IELTS (Academic), Internet Based TOEFL or Pearson Test of English (Academic). Other English tests may also be accepted and are assessed when you apply to Monash. See page 42 for English test levels.

⁵ The entry requirements in this table only provide the basic course entry requirements. Your prior qualification/s must be accredited to the equivalent Australian level specified in the entry requirements table. Full details are available on our website.

SINGLE DEGREE OFFERING

Master of Artificial Intelligence

COURSE CODE: C6007 CRICOS CODE: 103000K

LOCATION	ENTRY REQUIREMENTS ⁵	AVERAGE SCORE ⁶	DURATION ⁷
CLAYTON INTAKE FEBRUARY, JULY FEES ³ A\$57,300 ENGLISH TEST LEVEL ⁴ A	Bachelor's degree (or equivalent) in any field	Credit (60%)	2
<input checked="" type="checkbox"/> INDUSTRY EXPERIENCE <input checked="" type="checkbox"/> PROFESSIONALLY ACCREDITED	Bachelor's degree (or equivalent) in a related field	Credit (60%)	1.5

Master of Business Information Systems

COURSE CODE: C6003 CRICOS CODE: 079053A

LOCATION	ENTRY REQUIREMENTS ⁵	AVERAGE SCORE ⁶	DURATION ⁷
CLAYTON INTAKE FEBRUARY, JULY FEES ³ A\$55,500 ENGLISH TEST LEVEL ⁴ A	Bachelor's degree (or equivalent) in any field	Credit (60%)	2
<input checked="" type="checkbox"/> INDUSTRY EXPERIENCE <input checked="" type="checkbox"/> PROFESSIONALLY ACCREDITED	Bachelor's degree (or equivalent) in a related field	Credit (60%)	1.5

Master of Cybersecurity

COURSE CODE: C6002 CRICOS CODE: 0100636

LOCATION	ENTRY REQUIREMENTS ⁵	AVERAGE SCORE ⁶	DURATION ⁷
CLAYTON INTAKE FEBRUARY, JULY FEES ³ A\$57,300 ENGLISH TEST LEVEL ⁴ A	Bachelor's degree (or equivalent) in any field	Credit (60%)	2
<input checked="" type="checkbox"/> INDUSTRY EXPERIENCE <input checked="" type="checkbox"/> PROFESSIONALLY ACCREDITED	Bachelor's degree (or equivalent) in a related field	Credit (60%)	1.5

Master of Data Science

COURSE CODE: C6004 CRICOS CODE: 085349A

LOCATION	ENTRY REQUIREMENTS ⁵	AVERAGE SCORE ⁶	DURATION ⁷
CLAYTON INTAKE FEBRUARY, JULY FEES ³ A\$55,700 ENGLISH TEST LEVEL ⁴ A	Bachelor's degree (or equivalent) in any field	Credit (60%)	2
<input checked="" type="checkbox"/> INDUSTRY EXPERIENCE <input checked="" type="checkbox"/> PROFESSIONALLY ACCREDITED	Bachelor's degree (or equivalent) in a related field	Credit (60%)	1.5

Master of Information Technology

COURSE CODE: C6001 CRICOS CODE: 079055K

LOCATION	ENTRY REQUIREMENTS ⁵	AVERAGE SCORE ⁶	DURATION ⁷
CLAYTON INTAKE FEBRUARY, JULY FEES ³ A\$55,500 ENGLISH TEST LEVEL ⁴ A	Bachelor's degree (or equivalent) in any field	Credit (60%)	2
<input checked="" type="checkbox"/> INDUSTRY EXPERIENCE <input checked="" type="checkbox"/> PROFESSIONALLY ACCREDITED	Bachelor's degree (or equivalent) in a related field	Credit (60%)	1.5

DOUBLE DEGREE OFFERING

Master of Business Information Systems and Master of Global Business

COURSE CODE: C6015 CRICOS CODE: 119228C

LOCATION	ENTRY REQUIREMENTS ⁵	AVERAGE SCORE ⁶	DURATION ⁷
CLAYTON INTAKE FEBRUARY, JULY FEES ³ A\$59,900 ENGLISH TEST LEVEL ⁴ A	Bachelor's degree (or equivalent) in any field	High credit (65%)	2.5
<input checked="" type="checkbox"/> INDUSTRY EXPERIENCE <input checked="" type="checkbox"/> PROFESSIONALLY ACCREDITED	Bachelor's degree (or equivalent) in a related field	High credit (65%)	2

Master of Business Information Systems and Master of Management

COURSE CODE: C6014 CRICOS CODE: 119227D

LOCATION	ENTRY REQUIREMENTS ⁵	AVERAGE SCORE ⁶	DURATION ⁷
CLAYTON INTAKE FEBRUARY, JULY FEES ³ A\$59,900 ENGLISH TEST LEVEL ⁴ A	Bachelor's degree (or equivalent) in any field	High credit (65%)	2.5
<input checked="" type="checkbox"/> INDUSTRY EXPERIENCE <input checked="" type="checkbox"/> PROFESSIONALLY ACCREDITED	Bachelor's degree (or equivalent) in a related field	High credit (65%)	2

⁶ In equivalent Monash University grading scale terms, a 100% scale where 50% is a pass.

⁷ Duration is expressed in years, and reflects full-time study mode. Even if you're eligible for a shorter course duration, you may elect to complete the longer duration.

For full course details visit our website, monash.edu/study

Ranked among the world's top 40 law schools¹, Monash Law is recognised as one of Australia's largest and most prestigious educators in the field.

Located in the heart of Melbourne's legal precinct, Monash Law Chambers is the centre of our graduate teaching and a vibrant hub for learning, collaboration and professional engagement. With a broad teaching base, strong international partnerships and an outstanding reputation, we offer an extensive suite of postgraduate and research programs.

Career outcomes

Monash Law graduates are highly sought-after and pursue diverse career pathways across Australia and internationally. Our alumni work in major national and global law firms, boutique and regional practices, large corporations as in-house counsel, and across state and federal government.

For students seeking to apply their legal knowledge beyond traditional practice, a Monash Law degree also opens doors to a wide range of non-legal careers, including:

- banking and finance
- business management
- environmental protection and sustainable development
- government and public policy
- international organisations such as the United Nations
- non-government organisations including the Red Cross and Amnesty International
- project and program management
- science and engineering sectors.

¹ Equal 39th in the world (QS World University Rankings by subject, 2025); 36th in the world (Shanghai Global Ranking of Academic Subjects, 2025).

SINGLE DEGREE OFFERING

Graduate Diploma of Australian Law

COURSE CODE: L5002 CRICOS CODE: 097660F

LOCATION MONASH LAW CHAMBERS	ENTRY REQUIREMENTS ³	AVERAGE SCORE ⁴	DURATION ⁵
INTAKE FEBRUARY, JULY FEES ¹ A\$57,200 ENGLISH TEST LEVEL ² A	Bachelor's degree (or equivalent) in law from a non-Australian jurisdiction + a letter of assessment from the Victorian Legal Admissions Board (VLAB)	NA	1

Juris Doctor

COURSE CODE: L6005 CRICOS CODE: 094912D

LOCATION MONASH LAW CHAMBERS	ENTRY REQUIREMENTS ³	AVERAGE SCORE ⁴	DURATION ⁵
INTAKE JANUARY, MAY, AUGUST FEES ¹ A\$54,100 ENGLISH TEST LEVEL ² C <input checked="" type="checkbox"/> PROFESSIONALLY ACCREDITED	Bachelor's degree (or equivalent) in any field, OR Bachelor's degree (or equivalent) in any field + three years' professional experience + a personal statement, OR An equivalent qualification and experience approved by the faculty	Credit (60%)	3

[CLICK HERE](#)
for full details of our
graduate course offering

LAWS

Master of Laws

COURSE CODE: L6004 CRICOS CODE: 0100563

The degree you're awarded will reflect your chosen specialisation

ALSO OFFERED:

- GRADUATE CERTIFICATE
- GRADUATE DIPLOMA

LOCATION MONASH LAW CHAMBERS	ENTRY REQUIREMENTS ³	AVERAGE SCORE ⁴	DURATION ⁵
INTAKE FEBRUARY, JULY FEES ¹ A\$57,200 ENGLISH TEST LEVEL ² A	Bachelor's degree (or equivalent) in law from a non-Australian jurisdiction + a letter of assessment from the Victorian Legal Admissions Board (VLAB)	N/A	2
	Bachelor's degree (or equivalent) in law	Credit (60%)	1.5
	Bachelor's degree (or equivalent) in law + one year's relevant professional work experience or other learning approved by the faculty, OR	Credit (60%) ⁶	1
	Bachelor's degree (or equivalent) in law + a graduate diploma in law (or equivalent), OR		
	A JD or a bachelor's (hons) degree (or equivalent) in law	N/A	

SPECIALISATIONS

- Commercial and corporate law
- Criminal law and forensics
- Dispute resolution
- Global society and human rights
- Health law and community
- Labour and employment law
- Public sector governance and regulation
- Technology and innovation
- Transnational economic regulation.

LEGAL STUDIES

Master of Legal Studies

COURSE CODE: L6013 CRICOS CODE: 112791K

The degree you're awarded will reflect your chosen specialisation

ALSO OFFERED:

- GRADUATE CERTIFICATE
- GRADUATE DIPLOMA

LOCATION MONASH LAW CHAMBERS	ENTRY REQUIREMENTS ³	AVERAGE SCORE ⁴	DURATION ⁵
INTAKE FEBRUARY, JULY FEES ¹ A\$57,200 ENGLISH TEST LEVEL ² A	Bachelor's degree (or equivalent) in a related field, OR Bachelor's degree (or equivalent) + relevant professional experience	Credit (60%)	1.5
	Bachelor's degree (or equivalent) + a graduate diploma (or equivalent) in law or a related field, OR	Credit (60%) ⁶	1
	Bachelor's degree (or equivalent) in a related field + one year's relevant professional experience		
	Bachelor's (hons) degree (or equivalent) in a related field, OR	NA	
	An equivalent qualification and experience approved by the faculty		

SPECIALISATIONS

- Commercial and corporate law
- Criminal law and forensics
- Dispute resolution
- Global society and human rights
- Health law and community
- Labour and employment law
- Public sector governance and regulation
- Technology and innovation
- Transnational economic regulation.

DOUBLE DEGREE OFFERING

Master of Laws and Master of Global Business

COURSE CODE: L6014 CRICOS CODE: 118048D

LOCATION CAULFIELD AND MONASH LAW CHAMBERS	ENTRY REQUIREMENTS ³	AVERAGE SCORE ⁴	DURATION ⁵
INTAKE FEBRUARY, JULY FEES ¹ A\$59,900 ENGLISH TEST LEVEL ² A	Bachelor's degree in law (or equivalent)	Credit (60%)	2

Master of Laws and Master of Management

COURSE CODE: L6015 CRICOS CODE: 118047E

LOCATION CAULFIELD AND MONASH LAW CHAMBERS	ENTRY REQUIREMENTS ³	AVERAGE SCORE ⁴	DURATION ⁵
INTAKE FEBRUARY, JULY FEES ¹ A\$59,900 ENGLISH TEST LEVEL ² A	Bachelor's degree in law (or equivalent)	Credit (60%)	2

¹ 2026 quoted fees, in Australian dollars and are subject to change. Fees are per 48 credit points – a standard full-time course load for a year.

² This is only applicable if you have not satisfied the English language requirement; you're required to complete a Monash-approved English test such as IELTS (Academic), Internet Based TOEFL or Pearson Test of English (Academic). Other English tests may also be accepted and are assessed when you apply to Monash. See page 42 for English test levels.

³ This table represents basic course entry requirements only. Your prior qualifications must be accredited to the equivalent Australian level specified in the entry requirements table. Your entire academic record may be assessed. Additionally, your work experience will be assessed if it forms part of your application. Visit our website for details.

⁴ In equivalent Monash University grading scale terms, a 100% scale where 50% is a pass.

⁵ Duration is expressed in years, and reflects full-time study mode. Even if you're eligible for a shorter course duration, you may elect to complete the longer duration.

⁶ This average is required for the Bachelor's degree only.

For full course details visit our website, monash.edu/study

MEDICINE, NURSING AND HEALTH SCIENCES



CLICK HERE
for full details of our graduate course offering

If you have the passion, we have the opportunity.

In just over 60 years, Monash Medicine, Nursing and Health Sciences has become globally recognised for our quality education of more than 50,000 doctors, nurses and allied health professionals. As the University's largest research faculty, we have contributed to breakthroughs in crucial areas such as IVF, Alzheimer's disease, cancer research and infectious diseases. Our continued teaching excellence and research outcomes have cemented Monash's place as a world leader in medical and health sciences research and education.

TEACHING AND LEARNING FACILITIES

Our Clayton campus is home to Australia's first specialist heart hospital, the Victorian Heart Hospital. This groundbreaking institution signifies a new era of integrated heart research and clinical excellence in Australia. Under one roof, patients have access to world-leading cardiac care, supported by pioneering research led by Monash University's Victorian Heart Institute.

We utilise a bench-to-bedside model for our students from the first day they step into our classrooms, where students learn from teaching staff who are embedded in clinical and world-leading research.

RANKINGS

Monash Medicine, Nursing and Health Sciences has achieved excellent rankings for many subject areas. See our rankings below:

RANKED NO.3 IN AUSTRALIA AND NO.13 IN THE WORLD FOR NURSING¹

RANKED NO.5 IN AUSTRALIA AND NO.40 IN THE WORLD FOR PUBLIC HEALTH¹

RANKED NO.32 FOR ANATOMY AND PHYSIOLOGY² AND RANKED NO.47 FOR MEDICINE²

RANKED NO.2 IN AUSTRALIA AND NO.31 IN THE WORLD FOR CLINICAL AND HEALTH³

¹ Shanghai Academic Ranking of World Universities by subject, 2025.
² QS World rankings by subject, 2025.
³ Times Higher Education World University Rankings by subject, 2025.

PROFESSIONAL ACCREDITATION

Many of our graduate courses are professionally accredited.

CLINICAL PLACEMENTS

We partner with leading healthcare providers and industry leaders to equip you for a successful career in health.

Image: Biomedical science students at Clayton campus.

GAIN PROFESSIONAL ACCREDITATION

Master of Clinical Embryology⁶ COURSE CODE: M6010 CRICOS CODE: 028955G

LOCATION **CLAYTON, MONASH MEDICAL CENTRE**
INTAKE **FEBRUARY**
FEES¹ **AS\$80,850**
(The fee for 48 credit points is \$53,900 x 1.5 for this intensive course)
ENGLISH TEST LEVEL² **A**
 ADDITIONAL REQUIREMENTS

ENTRY REQUIREMENTS³

Bachelor's degree (or equivalent) in a related field in science or biomedical science and a one-year honours research degree (or equivalent)
Bachelor's degree (or equivalent) + a Graduate Diploma of Reproductive Sciences from Monash University (or equivalent)
Bachelor's degree (or equivalent) in a related field in medicine or veterinary medicine
A master's or PhD in science or biomedical science
Bachelor's degree (or equivalent) + minimum of one year of full-time work as an embryologist or andrologist (or equivalent)

AVERAGE SCORE⁴ DURATION⁵

Second class honours or above
Distinction (70%)
Credit (60%)
Pass (50%)
1⁷

Master of Clinical Psychology⁶ COURSE CODE: M6046 CRICOS CODE: 118465J

LOCATION **CLAYTON**
INTAKE **FEBRUARY**
FEES¹ **AS\$56,500**
ENGLISH TEST LEVEL² **D**
 PROFESSIONALLY ACCREDITED
 ADDITIONAL REQUIREMENTS

ENTRY REQUIREMENTS³

Australian Psychology Accreditation Council (APAC)-accredited four-year sequence in psychology as part of an embedded honours degree (or equivalent⁹), OR
APAC-accredited four-year sequence comprising:
• a three-year undergraduate major in psychology (or equivalent⁹) with an average of 80%, and
• a fourth-year honours specialisation in psychology (or equivalent⁹)

AVERAGE SCORE⁴ DURATION⁵

Honours (80%)
2

Bachelor of Medical Science and Doctor of Medicine⁶ COURSE CODE: M6018 CRICOS CODE: 0101541

LOCATION **CHURCHILL (Monash Rural Health)**
INTAKE **EARLY FEBRUARY**
FEES¹ **AS\$101,600**
ENGLISH TEST LEVEL² **C**
 ADDITIONAL REQUIREMENTS
 PROFESSIONALLY ACCREDITED
 CLINICAL PLACEMENT

ENTRY REQUIREMENTS³

Successfully completed a degree with significant and broad biomedical science content from an internationally recognised university with a minimum grade-point-average of 6.0 out of 7.0

DURATION⁵

4

Master of Nursing Practice⁶ COURSE CODE: M6016 CRICOS CODE: 068373J

LOCATION **CLAYTON**
INTAKE **FEBRUARY, JULY**
FEES¹ **AS\$47,400**
ENGLISH TEST LEVEL² **F**
 PROFESSIONALLY ACCREDITED
 ADDITIONAL REQUIREMENTS
 PRACTICAL PLACEMENT

ENTRY REQUIREMENTS³

Bachelor's degree (or equivalent excluding a Bachelor of Nursing) + either:
• a minimum of at least one six-credit-point unit of study in human anatomy/physiology or a related area from any recognised tertiary institution, OR
• Monash Human Biology short course

AVERAGE SCORE⁴ DURATION⁵

Credit (60%)
2

Master of Nutrition and Dietetics⁶ COURSE CODE: M6002 CRICOS CODE: 110244J

LOCATION **CLAYTON**
INTAKE **FEBRUARY, JULY**
FEES¹ **AS\$59,300**
ENGLISH TEST LEVEL² **D**
 PROFESSIONALLY ACCREDITED
 ADDITIONAL REQUIREMENTS
 PRACTICAL PLACEMENT

ENTRY REQUIREMENTS³

Bachelor's degree (or equivalent) in a related field with specified prerequisites¹⁰
Bachelor's degree (or equivalent) in nutrition science with specified prerequisites¹⁰

AVERAGE SCORE⁴ DURATION⁵

Distinction (70%)
Credit (60%)
2
1.5

Master of Occupational and Environmental Health COURSE CODE: M6026 CRICOS CODE: 028957E

ALSO OFFERED:
 GRADUATE DIPLOMA

LOCATION **ALFRED HOSPITAL**
INTAKE **FEBRUARY**
FEES¹ **AS\$55,900**
ENGLISH TEST LEVEL² **A**
 PROFESSIONALLY ACCREDITED
 ADDITIONAL REQUIREMENTS

ENTRY REQUIREMENTS³

Bachelor's degree (or equivalent) in any field + one year's work experience in occupational health and/or safety, OR
Bachelor's degree (or equivalent) in a related field

AVERAGE SCORE⁴ DURATION⁵

Pass (50%)
1.5

Master of Occupational Therapy Practice⁶

COURSE CODE: M6017 CRICOS CODE: 079265M

LOCATION	ENTRY REQUIREMENTS ³	AVERAGE SCORE ⁴	DURATION ⁵
PENINSULA INTAKE EARLY JULY FEES ¹ A\$61,700 ENGLISH TEST LEVEL ² C <input checked="" type="checkbox"/> PROFESSIONALLY ACCREDITED <input checked="" type="checkbox"/> PRACTICAL PLACEMENT	Bachelor's degree (or equivalent) + either: • a minimum of at least one six-credit-point unit of study in human anatomy AND physiology, OR • Monash Human Biology short course, OR • BMA1901 Human Structure and Function as a single-unit enrolment at Monash	High Credit (65%)	2

Doctor of Physiotherapy⁶

COURSE CODE: M6032 CRICOS CODE: 099968C

LOCATION	ENTRY REQUIREMENTS ³	AVERAGE SCORE ⁴	DURATION ⁵
PENINSULA INTAKE JULY FEES ¹ A\$65,400 ENGLISH TEST LEVEL ² C <input checked="" type="checkbox"/> PRACTICAL PLACEMENT <input checked="" type="checkbox"/> PROFESSIONALLY ACCREDITED	Bachelor's degree (or equivalent) + completed units ¹⁰ in human anatomy AND human physiology AND biostatistics	Distinction (70%)	3

Doctor of Podiatric Medicine⁶

COURSE CODE: M6043 CRICOS CODE: 109147J

LOCATION	ENTRY REQUIREMENTS ³	AVERAGE SCORE ⁴	DURATION ⁵
PENINSULA INTAKE FEBRUARY FEES ¹ A\$52,400 ENGLISH TEST LEVEL ² C <input checked="" type="checkbox"/> PRACTICAL PLACEMENT <input checked="" type="checkbox"/> PROFESSIONALLY ACCREDITED	Bachelor's degree (or equivalent) + completed units ¹⁰ in human anatomy AND pharmacology	Distinction (70%)	3

Graduate Diploma of Reproductive Sciences⁶

COURSE CODE: M6010 CRICOS CODE: 019066D

LOCATION	ENTRY REQUIREMENTS ³	AVERAGE SCORE ⁴	DURATION ⁵
CLAYTON, MONASH MEDICAL CENTRE INTAKE FEBRUARY FEES ¹ A\$52,600 ENGLISH TEST LEVEL ² A <input checked="" type="checkbox"/> PATHWAY TO MASTER OF CLINICAL EMBRYOLOGY	Bachelor's degree (or equivalent) in nursing or biological, medical, agricultural or veterinary sciences, OR Qualifications and experience in the reproductive sciences gained after completing a degree in another field ¹¹	Credit (60%)	1

Master of Social Work⁶

COURSE CODE: M6012 CRICOS CODE: 090746A

LOCATION	ENTRY REQUIREMENTS ³	AVERAGE SCORE ⁴	DURATION ⁵
CAULFIELD INTAKE EARLY FEBRUARY, JUNE FEES ¹ A\$44,800 ENGLISH TEST LEVEL ² D <input checked="" type="checkbox"/> PROFESSIONALLY ACCREDITED <input checked="" type="checkbox"/> 1000 HOURS PROFESSIONAL PRACTICE	Bachelor's degree (or equivalent) and at least one year of full-time studies in the social and behavioural sciences, OR A master's program which qualifies graduates to register and practice in allied health, education, medicine or nursing	Credit (60%) Pass (50%)	2

DIVERSIFY YOUR SKILLS AND GAIN EXPERTISE

Master of Bioinformatics

COURSE CODE: M6049 CRICOS CODE: 116951M

LOCATION	ENTRY REQUIREMENTS ³	AVERAGE SCORE ⁴	DURATION ⁵
CLAYTON INTAKE FEBRUARY FEES ¹ A\$52,800 ENGLISH TEST LEVEL ² C	Bachelor's degree (or equivalent) in a related field	High Credit (65%)	2

Master of Biomedical and Health Science

COURSE CODE: M6003 CRICOS CODE: 085118E

LOCATION	ENTRY REQUIREMENTS ³	AVERAGE SCORE ⁴	DURATION ⁵
CLAYTON INTAKE FEBRUARY, JULY FEES ¹ A\$52,800 ENGLISH TEST LEVEL ² B	Bachelor's degree (or equivalent) in biomedical science or other related fields	Credit (60%)	2
	Bachelor's (hons) degree (or equivalent) in biomedical science or related fields	High Credit (65%)	1

Master of Biotechnology

COURSE CODE: M6030 CRICOS CODE: 095646J

LOCATION	ENTRY REQUIREMENTS ³	AVERAGE SCORE ⁴	DURATION ⁵
CLAYTON INTAKE FEBRUARY, JULY FEES ¹ A\$52,800 ENGLISH TEST LEVEL ² B	Bachelor's degree (or equivalent) in a related field	Credit (60%)	2
	Bachelor's (hons) degree (or equivalent) in a related field	Distinction (70%)	1

Master of Clinical Research

COURSE CODE: M6028 CRICOS CODE: 102718B

The degree you're awarded will reflect your chosen specialisation

LOCATION	ENTRY REQUIREMENTS ³	AVERAGE SCORE ⁴	DURATION ⁵
ALFRED HOSPITAL INTAKE FEBRUARY, JULY⁹ FEES ¹ A\$55,900 ENGLISH TEST LEVEL ² A <input checked="" type="checkbox"/> ADDITIONAL REQUIREMENTS	Bachelor's degree (or equivalent) in a related field	Credit (60%)	2
	Bachelor's degree (or equivalent) in a related field with a research Honours, or a Monash University Bachelor of Public Health, or Monash Bachelor of Health Sciences, or a medical degree, OR <input checked="" type="checkbox"/> ADDITIONAL REQUIREMENTS	Credit (60%)	1.5
	Bachelor's degree (or equivalent) in a related field + a minimum of one year's relevant work experience		
	Bachelor's degree in a related field + a minimum of two years' relevant work experience + Part 1 of a specialist medical training program or current fellowship of a specialist medical college recognised by the Medical Board of Australia + current registration with Ahpra		1
	A master's degree (or equivalent) in a relevant discipline or a Master of Philosophy (or equivalent) or a PhD or doctoral degree (or equivalent) + a minimum of two year's relevant work experience		

SPECIALISATIONS⁹

- Clinical Research
- Translational Medicine

Master of Health Data Analytics

COURSE CODE: M6036 CRICOS CODE: 106844H

LOCATION	ENTRY REQUIREMENTS ³	AVERAGE SCORE ⁴	DURATION ⁵
ALFRED HOSPITAL¹² INTAKE FEBRUARY FEES ¹ A\$55,900 ENGLISH TEST LEVEL ² A	Bachelor's degree (or equivalent) in any field	Credit (60%)	2

Master of Public Health

COURSE CODE: M6024 CRICOS CODE: 094880G

The degree you're awarded will reflect your chosen specialisation

LOCATION	ENTRY REQUIREMENTS ³	AVERAGE SCORE ⁴	DURATION ⁵
ALFRED HOSPITAL INTAKE FEBRUARY, JULY FEES ¹ A\$55,900 ENGLISH TEST LEVEL ² A <input checked="" type="checkbox"/> PROFESSIONALLY ACCREDITED	Bachelor's degree (or equivalent) in any field	Credit (60%)	2
	Bachelor's degree (or equivalent) in a related field with a research honours, OR A medical degree, OR A Monash University Bachelor of Public Health, OR A Monash University Bachelor of Public Health Science, or Bachelor of Health Sciences, or Monash University Bachelor of Biomedical Science with 36-credit-points of specified public health units, OR	Credit (60%)	1.5
	Bachelor's degree (or equivalent) in a related field + two years of relevant work experience		
	Master of Philosophy or PhD or doctoral degree in a related field + two years of relevant work experience, OR		
	Bachelor's degree in a related field + two years of relevant work experience + part 1 of a specialist medical training program or current fellowship of a specialist medical college recognised by the Medical Board of Australia + current registration with Ahpra		1

ADVANCED SPECIALIST COURSES FOR HEALTH CARE PROFESSIONALS

Master of Advanced Nursing

(Students enrolled in the Advanced midwifery specialisation will be awarded the Master of Advanced Midwifery)

COURSE CODE: M6006 **CRICOS CODE:** 098319M

LOCATION CLAYTON, PENINSULA
INTAKE FEBRUARY, JULY
FEES¹ A\$44,600
ENGLISH TEST LEVEL² B

SPECIALISATIONS

- Advanced midwifery
- Advanced nursing studies
- Education in healthcare
- Healthcare in disasters
- Leadership and management in healthcare
- Palliative and end-of-life care
- Trauma nursing

ENTRY REQUIREMENTS³

Healthcare in disasters, Advanced nursing studies, Education in healthcare, Leadership and management in healthcare, Trauma nursing, Palliative and end-of-life care

	AVERAGE SCORE⁴	DURATION⁵
Bachelor's degree in nursing (or equivalent)	Credit (60%)	2
Bachelor's degree in nursing (or equivalent) + a minimum of two years' full-time-equivalent relevant professional experience in nursing	Credit (60%)	1.5
Bachelor's (hons) degree (or equivalent) in nursing	Credit (60%)	1
Advanced midwifery		
Bachelor's degree or graduate diploma (or equivalent) in midwifery	Credit (60%)	2
Bachelor's degree or graduate diploma (or equivalent) in midwifery + a minimum of two years' full-time equivalent relevant professional experience in midwifery	Credit (60%)	1.5
Bachelor's (hons) degree in midwifery (or equivalent)	Credit (60%)	1

Master of Health Management

COURSE CODE: M6008 **CRICOS CODE:** 114095G

ALSO OFFERED:
 GRADUATE DIPLOMA

LOCATION ALFRED HOSPITAL
INTAKE FEBRUARY, JULY
FEES¹ A\$55,900
ENGLISH TEST LEVEL² A

- PROFESSIONALLY ACCREDITED
- ADDITIONAL REQUIREMENTS

ENTRY REQUIREMENTS³

	AVERAGE SCORE⁴	DURATION⁵
Bachelor's degree (or equivalent) in a related field + one years' relevant professional experience		2
Bachelor's degree (or equivalent) in a related field + two years' relevant management experience	Credit (60%)	1.5
Monash University Graduate Diploma of Health Management		1

1 2026 quoted fees, in Australian dollars and are subject to change. Fees are per 48 credit points – a standard full-time course load for a year.
 2 This is only applicable if you have not satisfied the English language requirement; you're required to complete a Monash-approved English test such as IELTS (Academic), Internet Based TOEFL or Pearson Test of English (Academic). Other English tests may also be accepted and are assessed when you apply to Monash. See page 42 for English test levels. For Master of Nursing Practice, additional rules apply to comply with the Australian Health Practitioner Regulation Agency registration standards and English language requirements. See our website for more information.
 3 The entry requirements in this table only provide the basic course entry requirements. Your prior qualification/s must be accredited to the equivalent Australian level specified in the entry requirements table. Full details are available on our website.
 4 In equivalent Monash University grading scale terms, a 100% scale where 50% is a pass. Please note that some courses use a Weighted Average Mark (WAM). Please see our website for full course details.
 5 Duration is expressed in years, and reflects full-time study mode. Even if you're eligible for a shorter course duration, you may elect to complete the longer duration.
 6 There are limited places for this course. Meeting the entry scores may not be enough to secure a place in this course.
 7 This is an intensive course requiring on-campus students to overload and complete in one year.
 8 A qualification obtained from an overseas education institution that has been assessed as comparable to an APAC-accredited qualification in psychology or an APAC-accredited sequence in psychology, by an appropriate authority. Please see our website for more details.
 9 Intakes will vary depending on either the specialisation or the entry level (or a combination of both). Please see our website for more details.
 10 The prerequisite study must have been completed within the past 10 years.
 11 This should include a major field of study in anatomy, biology, biochemistry, genetics, pharmacology, physiology, microbiology, immunology or zoology.
 12 This course requires study at multiple campuses. Please check the handbook entry of the individual units for details of location and teaching activities.

For full course details visit our website, monash.edu/study

PHARMACY AND PHARMACEUTICAL SCIENCES

RANKED NO.1 IN AUSTRALIA AND NO.4 IN THE WORLD
 FOR PHARMACY AND PHARMACOLOGY¹

Our specialist Pharmacy and Pharmaceutical Sciences campus is located in Parkville, close to the Melbourne CBD and in the heart of a key biomedical precinct that's a hub for health and biomedicine innovation and jobs in Victoria.

We're a tight-knit community where you'll easily get to know your fellow students and lecturers. Dedicated to the development of competent and confident pharmacists and

pharmaceutical scientists, we have excellent links to industry and research bodies, take an innovative approach to teaching, and embed practical placements into our courses to give you valuable industry experience.

The Master of Pharmaceutical Science has been designed in consultation with major employers and research leaders and will build on your scientific knowledge, preparing you for a career in the pharmaceutical sector or related industries such as cosmetics, food and beverage, and paints and coatings.

The Master of Global Medicines Development is jointly delivered with the University of North Carolina at Chapel Hill and is for those who want to lead, coordinate, and influence the future of medicine development globally.

GRADUATE ENTRY PHARMACY

Want to qualify as a registered pharmacist in Australia? Consider Graduate Entry Pharmacy. go.monash.edu/grad-pharmacy

CLICK HERE
 for full details of our graduate course offering

Master of Pharmaceutical Science²

COURSE CODE: P6005 **CRICOS CODE:** 105950C

LOCATION PARKVILLE
INTAKE FEBRUARY, JULY³
FEES⁴ A\$58,800
ENGLISH TEST LEVEL⁵ A

ENTRY REQUIREMENTS⁶

	AVERAGE SCORE⁷	DURATION⁸
Bachelor's degree (or equivalent) in pharmacy, science, biomedical science or engineering (in an appropriate discipline such as pharmaceutical, chemical, biomedical or materials)	Credit (60%)	2
Bachelor's degree (or equivalent) in pharmaceutical science	Credit (60%)	1.5 ³
Bachelor's (hons) degree (or equivalent) in pharmaceutical science, OR		
Bachelor's (hons) double degree (or equivalent) in engineering and pharmaceutical science	Distinction (70%)	1

Master of Global Medicines Development

COURSE CODE: P6006 **CRICOS CODE:** 118224D

LOCATION PARKVILLE
INTAKE FEBRUARY
FEES⁴ A\$60,400
ENGLISH TEST LEVEL⁵ A

ENTRY REQUIREMENTS⁶

	AVERAGE SCORE⁷	DURATION⁸
Bachelor's degree (or equivalent) in pharmaceutical science, pharmacy, science, biomedical science or engineering (in an appropriate discipline such as pharmaceutical, chemical, biomedical or materials)	Credit (60%)	1.5



Image: Conducting research in the Faculty of Pharmacy and Pharmaceutical Sciences, Parkville campus.

1 QS World University Rankings by subject, 2025.
 2 Completion of the Master of Pharmaceutical Science is not a pathway towards provisional or full registration as pharmacist in Australia.
 3 The July intake is only available to the 1.5-year program.
 4 2026 quoted fees, in Australian dollars and are subject to change. Fees are per 48 credit points – a standard full-time course load for a year.
 5 This is only applicable if you have not satisfied the English language requirement; you're required to complete a Monash-approved English test such as IELTS (Academic), Internet Based TOEFL or Pearson Test of English (Academic). Other English tests may also be accepted and are assessed when you apply to Monash. See page 42 for English test level.
 6 The entry requirements in this table only provide the basic course entry requirements. Your prior qualification/s must be accredited to the equivalent Australian level specified in the entry requirements table. Full details are available on our website.
 7 In equivalent Monash University grading scale terms, a 100% scale where 50% is a pass.
 8 Duration is expressed in years, and reflects full-time study mode. Even if you're eligible for a shorter course duration, you may elect to complete the longer duration.
 For full course details visit our website, monash.edu/study

Studying science at Monash gives you the opportunity to learn from leading experts who are at the forefront of teaching and research in pure and applied sciences.

You'll develop academically and personally in a dynamic and stimulating environment, with access to brilliant minds, exceptional new facilities and dedicated spaces.

FACILITIES

More than \$200 million has been invested in recent years to transform the Clayton-based Faculty of Science into one of the leading science precincts in the southern hemisphere.

- Graduate student lounge
- Green Chemical Futures laboratories
- New Horizons Research Centre
- Monash Food Innovation
- The Hutton-Westfold Observatory.

INTERNSHIPS, FIELDWORK AND EXPERIENTIAL LEARNING

Monash is committed to providing you with the best possible opportunity to apply academic theory to real-world situations through our accredited internship and fieldwork programs.

These programs offer you the chance to either work within an organisation or carry out fieldwork and research both locally and internationally for a period of between four weeks and a full semester.

[CLICK HERE](#)
for full details of our
graduate course offering

Image: Outside the Green Chemicals Futures laboratories building, Clayton campus.

Master of Behaviour and Systemic Change

COURSE CODE: S6011 CRICOS CODE: 115304F

LOCATION CLAYTON INTAKE FEBRUARY, JULY FEES' A\$57,500 ENGLISH TEST LEVEL ² A	ENTRY REQUIREMENTS ³	AVERAGE SCORE ⁴	DURATION ⁵
	Bachelor's degree (or equivalent) in a related field, OR	Credit (60%)	
	Bachelor's degree (or equivalent) in any field + a graduate certificate or graduate diploma (or equivalent)	Credit (60%) ⁶	1.5
	Bachelor's (hons) degree (or equivalent) in a related field	Credit (60%)	1

Master of Environment and Sustainability

COURSE CODE: S6002 CRICOS CODE: 089231E

LOCATION CLAYTON INTAKE FEBRUARY, JULY FEES' A\$57,500 ENGLISH TEST LEVEL ² A	ENTRY REQUIREMENTS ³	AVERAGE SCORE ⁴	DURATION ⁵
	Bachelor's degree (or equivalent) in any field	Credit (60%)	2
	Bachelor's degree (or equivalent) in a related field, OR	Credit (60%)	
	Bachelor's degree (or equivalent) in any field + a graduate certificate or graduate diploma (or equivalent) in a related field	Credit (60%) ⁶	1.5
	Bachelor's (hons) degree (or equivalent) in a related field	Credit (60%)	1

Master of Financial Mathematics

COURSE CODE: S6001 CRICOS CODE: 086157A

LOCATION CLAYTON INTAKE FEBRUARY, JULY FEES' A\$57,500 ENGLISH TEST LEVEL ² A	ENTRY REQUIREMENTS ³	AVERAGE SCORE ⁴	DURATION ⁵
	Bachelor's degree (or equivalent) in any field with a strong mathematical content	High Credit (65%)	2
	Bachelor's degree (or equivalent) in mathematics, OR		
	Graduate certificate or graduate diploma (or equivalent) with a strong mathematical content	High Credit (65%)	1.5
	Bachelor's (hons) degree (or equivalent) in mathematics	High Credit (65%)	1

Master of Food Science and Agribusiness

COURSE CODE: S6004 CRICOS CODE: 099361A

LOCATION CLAYTON INTAKE FEBRUARY, JULY FEES' A\$57,500 ENGLISH TEST LEVEL ² A	ENTRY REQUIREMENTS ³	AVERAGE SCORE ⁴	DURATION ⁵
	Bachelor's degree (or equivalent) in science, engineering, dietetics or health	Credit (60%)	2
	Bachelor's degree (or equivalent) in food science or food engineering	Credit (60%)	1.5
	Bachelor's (hons) degree (or equivalent) in food science or food engineering	Credit (60%)	1

Master of Genome Analytics

COURSE CODE: S6005 CRICOS CODE: 0101962

LOCATION CLAYTON INTAKE FEBRUARY, JULY FEES' A\$57,500 ENGLISH TEST LEVEL ² A	ENTRY REQUIREMENTS ³	AVERAGE SCORE ⁴	DURATION ⁵
	Bachelor's degree (or equivalent) with at least first-year biology or related discipline studies	Credit (60%)	2
	Bachelor's degree (or equivalent) in genetics or a related field	Credit (60%)	1.5

Master of Geographical Information Science and Technology

COURSE CODE: S6007 CRICOS CODE: 112792J

LOCATION CLAYTON INTAKE FEBRUARY, JULY FEES' A\$57,500 ENGLISH TEST LEVEL ² A	ENTRY REQUIREMENTS ³	AVERAGE SCORE ⁴	DURATION ⁵
	Bachelor's degree (or equivalent) with at least a minor in a related field	Credit (60%)	2
	Bachelor's degree (or equivalent) with a major in a related field including at least one unit covering the fundamentals of GIS and technology	Credit (60%)	1.5

Master of Green Chemistry and Sustainable Technologies

COURSE CODE: S6006 CRICOS CODE: 109386E

LOCATION CLAYTON INTAKE FEBRUARY, JULY FEES' A\$57,500 ENGLISH TEST LEVEL ² A	ENTRY REQUIREMENTS ³	AVERAGE SCORE ⁴	DURATION ⁵
	Bachelor's degree (or equivalent) at least first-year chemistry studies	Credit (60%)	2
	Bachelor's degree (or equivalent) in a related field	Credit (60%)	1.5
	Bachelor's (hons) degree (or equivalent) in either chemistry or biochemistry	Credit (60%)	1

Master of Mathematics

COURSE CODE: S6003 CRICOS CODE: 096868J

LOCATION CLAYTON INTAKE FEBRUARY, JULY FEES' A\$57,500 ENGLISH TEST LEVEL ² A	ENTRY REQUIREMENTS ³	AVERAGE SCORE ⁴	DURATION ⁵
	Bachelor's degree (or equivalent) in any field with mathematics units	High Credit (65%) ⁸	2
	Bachelor's degree (or equivalent) in mathematics OR		
	A graduate certificate (or equivalent) or graduate diploma (or equivalent) in any field with mathematics units	High Credit (65%) ⁸	1.5
	Bachelor's (hons) degree (or equivalent) in mathematics	High Credit (65%)	1

Master of Science

COURSE CODE: S6000 CRICOS CODE: 096867K

The degree you're awarded will reflect your chosen specialisation

LOCATION CLAYTON INTAKE FEBRUARY, JULY FEES' A\$57,500 ENGLISH TEST LEVEL ² A	ENTRY REQUIREMENTS ³	AVERAGE SCORE ⁴	DURATION ⁵
	Bachelor's degree (or equivalent) in a related science discipline	High Credit (65%)	2
	Bachelor's degree (or equivalent) with at least a major in a related science discipline	High Credit (65%)	1.5
	<input checked="" type="checkbox"/> ADDITIONAL REQUIREMENTS		
	Bachelor's (hons) degree (or equivalent) in a related science discipline	High Credit (65%)	1
	SPECIALISATIONS		
	<ul style="list-style-type: none"> • Astrophysics • Atmospheric science • Earth science • Physics 		

¹ 2026 quoted fees, in Australian dollars and are subject to change. Fees are per 48 credit points – a standard full-time course load for a year.

² This is only applicable if you have not satisfied the English language requirement; you're required to complete a Monash-approved English test such as IELTS (Academic), Internet Based TOEFL or Pearson Test of English (Academic). Other English tests may also be accepted and are assessed when you apply to Monash. See page 42 for English test levels.

³ The entry requirements in this table only provide the basic course entry requirements. Your prior qualification/s must be accredited to the equivalent Australian level specified in the entry requirements table. Full details are available on our website.

⁴ In equivalent Monash University grading scale terms, a 100% scale where 50% is a pass.

⁵ Duration is expressed in years, and reflects full-time study mode. Even if you're eligible for a shorter course duration, you may elect to complete the longer duration.

⁶ You need to have achieved this average in both qualifications.

⁷ Intakes will vary depending on your entry level. Please see our website for more details.

⁸ You must have achieved a high credit (65%) average for both the degree and for the mathematics units.

For full course details visit our website, monash.edu/study



Image: Learning and Teaching Building, Clayton campus.

ENTRY REQUIREMENTS

When you apply to a Monash graduate course, you must satisfy all of the following requirements:

1 MINIMUM AGE REQUIREMENTS: You must be at least 17 years of age to enrol in a graduate course. Some exemptions may apply. Visit go.monash.edu/age-requirements.

2 ACADEMIC ENTRY REQUIREMENTS: All graduate courses require you to have successfully completed a minimum of an Australian bachelor degree (or equivalent) and achieve the required academic entry score. The course tables in this guide only provide the basic course entry requirements – full details are available on our website.

3 ENGLISH ENTRY REQUIREMENTS: All graduate courses require you to satisfy English entry requirements where different entry levels apply. The measure of English must be completed within three years prior to the Monash course commencement date (other guidelines may apply).

English entry requirements can be met in one of the following ways:

- **Language of instruction:** You can meet English entry requirements if you've completed half a year of full-time study (equivalent to 24 Monash credit points) at Australian VET Diploma (AQF level 5) or higher (or equivalent) at an institution where English is the language of instruction, communication and assessment for all aspects of study for the whole of the educational institution.
- **English tests:** Monash accepts the following English tests as satisfying English entry requirements:
 - IELTS (Academic): www.ielts.org
 - TOEFL (internet based): www.ets.org
 - Pearson Test of English (Academic): www.pearsonpte.com
 - C1 Advanced and C2 Proficiency: www.cambridgeenglish.org
 - Other English tests are accepted and are located on our website. Not all Monash-approved English tests are accepted for courses with additional registration requirements.
- **Monash English:** If your English test does not meet the English entry requirements, you may want to consider completing Monash English. Visit go.monash.edu/mc-english-courses.

If you have completed several measures of English proficiency over a period of time, the highest valid measure will be accepted. Monash reserves the right to ask students to undertake a Monash-approved English test to meet English entry requirements. For more information refer to go.monash.edu/mc-english-courses.

4 ADDITIONAL REQUIREMENTS
Some graduate courses may require you to satisfy additional and/or special requirements. Full details for these can be found on our website.

Please note that all entry requirements for Monash University are subject to change.

MONASH UNIVERSITY ENGLISH TEST LEVELS

English test ¹	Monash University postgraduate levels					
	Level A	Level B	Level C	Level D	Level E	Level F ²
IELTS (Academic)						
Overall Band Score	6.5	6.5	7	7	7	7
Listening	6	6.5	6.5	7	7.5	7
Reading	6	6.5	6.5	7	7	7
Writing	6	6	6.5	7	7	6.5
Speaking	6	6	6.5	7	7.5	7
TOEFL (Internet Based)³						
Total Score	4	4	4.5	5	5	5
Listening	3	4.5	4.5	5	5.5	5
Reading	3.5	4	4	5	5	5
Writing	4.5	4.5	5	5.5	5.5	5
Speaking	3.5	3.5	4	4.5	4.5	4.5
Pearson Test of English (Academic)						
Overall Score	58	58	65	65	65	66
Listening	50	58	58	65	73	66
Reading	50	58	58	65	65	66
Writing	50	50	58	65	65	58
Speaking	50	50	58	65	73	66
– C1 Advanced – C2 Proficiency						
Overall Score	176	176	185	185	185	185
Listening	169	176	176	185	191	185
Reading	169	176	176	185	185	185
Writing	169	169	176	185	185	176
Speaking	169	169	176	185	191	185

Other English tests are accepted and are located on our website at monash.edu/study

¹ The English test level for each Monash course is specified in the course tables in this guide.

² Not all Monash-approved English tests are accepted for courses assigned at Level F with additional registration requirements. For further details, visit monash.edu/study.

³ Applicable to TOEFL (Internet Based) tests taken on 21 January 2026 onwards. For entry scores applicable to TOEFL (Internet Based) tests taken before 21 January 2026, please see our website.



Image: Students outside the Chancellery building, Clayton campus.

APPLICATION PROCESS FOR INTERNATIONAL STUDENTS

BEFORE YOU APPLY

Use monash.edu/study to check:

- minimum age requirements
- minimum entry requirements that apply to international students
- English entry requirements
- course entry requirements
- additional requirements (if applicable)
- special requirements (see handbook.monash.edu)
- application deadlines
- start dates
- fees.

APPLICATION PROCESS

1 **Apply:** Apply for your preferred course at go.monash.edu/apply-to-monash. You'll also need to provide additional documents to support your application that may require certification and/or translation. Visit go.monash.edu/certifying-documents.

2 **Your application is assessed:** We determine whether you've met the University entry requirements, and if successful you'll receive an offer known as an International Student Course Agreement (ISCA). Monash also checks whether you're a genuine student seeking entry to Australia to study. Visit go.monash.edu/genuine-student-requirements.

3 **Accept your offer:** Follow the instructions in your ISCA. You must complete, sign and return all pages in Part A of your ISCA, along with payment, and provide a copy of the personal details page of your passport to Admissions *BEFORE* the offer lapse date. If you are under 18, you also need to complete and return the 'Under 18 Welfare and Accommodation Form'.

For more information, visit: go.monash.edu/Under-18-form

4 **Receive a Confirmation of Enrolment (CoE) and enrol online:** Once your acceptance has been processed, you'll receive an electronic CoE and an invitation to set up your Monash account to enrol in your course online. If you are under 18, once your welfare and accommodation arrangements are made, you'll also receive the Confirmation of Appropriate Accommodation and Welfare (CAAW). You'll need to plan your course and enrol early so that you can get the best possible start.

5 **Arrange your student visa:** You'll need the CoE (and CAAW if you are under 18) to apply for your student visa with the Department of Home Affairs (DHA) for study in Australia¹. When applying for your student visa, you'll need to meet all core visa criteria, such as the genuine student requirement, good character and health criteria. Financial capacity documentation may also be required. You'll also need to satisfy English requirements set by DHA where these requirements may differ from Monash.

If you're under 18 years of age when you start your course, you need to have your caregiver and accommodation arrangements approved before applying for your student visa. Visit go.monash.edu/student-u18.

For more information, visit: go.monash.edu/student-visa.

6 **Planning your arrival:** Participate in the pre-arrival briefing, research your accommodation options, and attend Orientation week. Use a checklist to ensure you've completed essential tasks before you start your course at Monash.

WHEN SHOULD YOU APPLY?

Apply as early as possible, as some courses may close a few months or a year before the course start date. This allows time for your application to be processed and can help to secure a place if your preferred course has limited places. Applying early also gives you time to get your student visa, which can take up to six months for some nationalities and countries.

APPLY FOR CREDIT

To apply for credit, visit: go.monash.edu/credit.

DEFER YOUR STUDIES

Monash generally allows deferment of study up to a maximum of 12 months, or longer in exceptional circumstances. If you decide to delay your course commencement, send your deferral request to mu.documents@monash.edu or through your Monash education agent, if applicable.


Other guidelines apply. Visit: go.monash.edu/defer


NEED HELP WITH YOUR APPLICATION?

If you're applying through a Monash education agent, contact them for assistance. Some Monash education agents may charge a fee for additional services. Please be aware of agents who claim to represent Monash when they don't. For more details and a list of authorised Monash education agents visit, go.monash.edu/agent.

Contact us:

 go.monash.edu/general-enquiries

 +61 39903 4788

 Chat with Monash

 **CLICK HERE**
for more information on our application process

FEES

To study at Monash University, you'll need to pay tuition fees to the University. As an international student, you'll be charged full fees. Tuition fees vary depending on the course and the year of commencement. All tuition fees and course durations specified in this guide are in Australian dollars and only apply to courses studied at Australian campuses. The tuition fees quoted are for 48 credit points and are applicable to courses commencing in 2026. Tuition fees for courses commencing in 2027 will be different. Monash University reserves the right to adjust the annual tuition fees in future years of your course. Any adjustment will be applied on the first day of January each year for teaching periods with a census date thereafter.

OVERSEAS STUDENT HEALTH COVER (OSHC)

It's a condition of the Student Visa (subclass 500) that you must hold Overseas Student Health Cover (OSHC) for the duration of your stay in Australia, beginning on the day of your arrival. Monash University requires all commencing international students to purchase OSHC for the duration of their visa.

If you're accompanied by immediate family to Australia as dependants on your student visa, you'll also need to purchase the visa-length OSHC for them.

Your Confirmation of Enrolment (CoE), for student visa purposes, will only be issued:

- once you've accepted your course offer along with payment for OSHC; or
- provided proof of having a valid visa-length OSHC; or
- you've submitted approved documentation for exemption from payment of OSHC.

go.monash.edu/oshc

 **CLICK HERE**
for more information



Image: Art, Design and Architecture facilities at Caulfield campus.

¹ You're advised not to commence the visa application process until you've been issued with your CoE. Your student visa application may take up to six months or more, depending on your nationality and country of residence.



CLICK HERE
to explore our digital course guide

MONASH UNIVERSITY

monash.edu

FIND A COURSE

monash.edu/study

FUTURE STUDENT ENQUIRIES

Australian citizens, permanent residents and New Zealand citizens

monash.edu/study/contact-us

International students

T Australia freecall: 1800 MONASH (666 274)

T +61 3 9903 4788 (outside Australia)

E study@monash.edu

